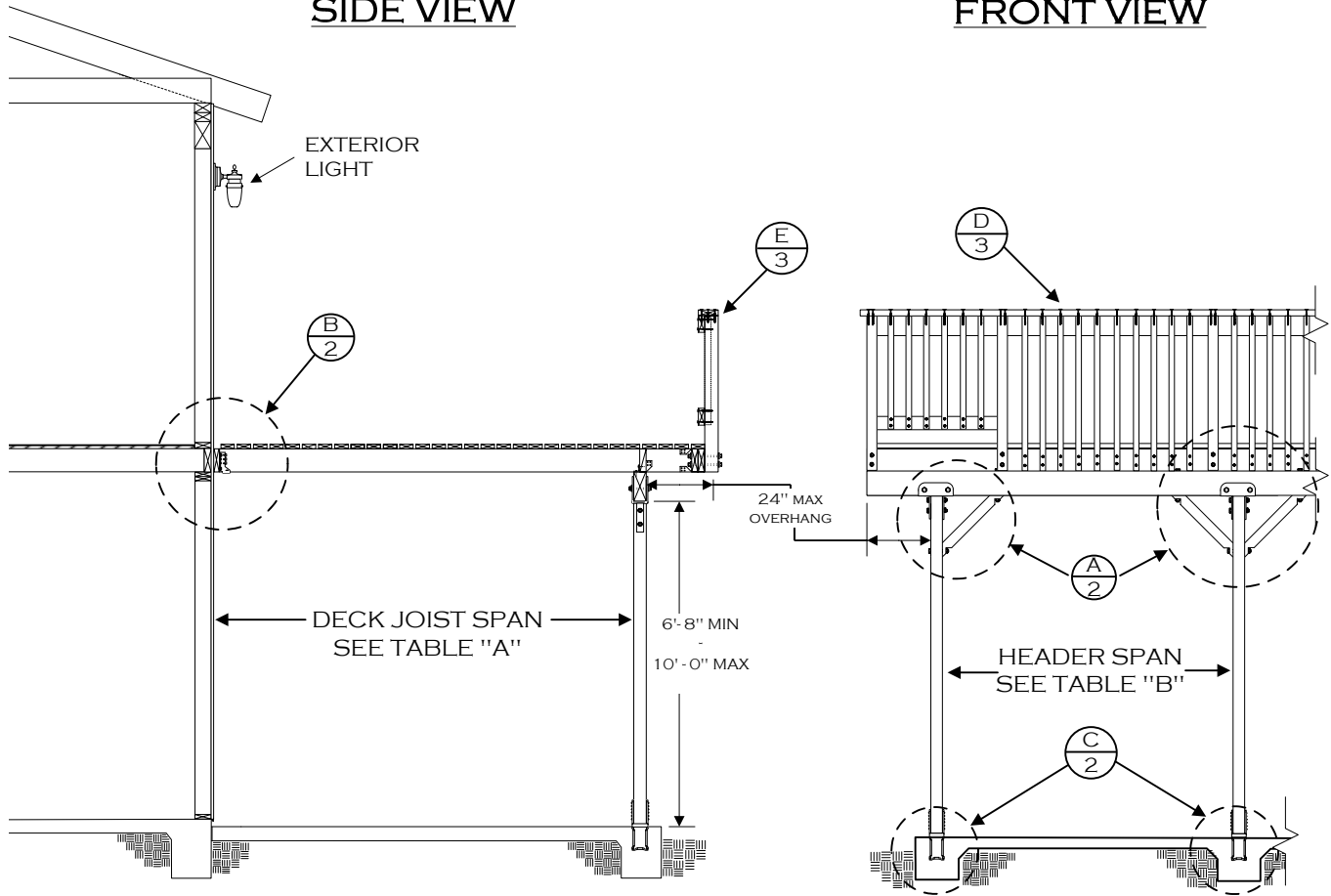


**SIDE VIEW**

**FRONT VIEW**



**TABLE "A"**  
DECK JOIST SPANS  
(DOUGLAS FIR #2 OR BETTER)

SIZE	SPACING	SPAN
2 x 6	12" o.c.	10' - 6"
	16" o.c.	9' - 0"
	24" o.c.	7' - 6"
2 x 8	12" o.c.	14' - 0"
	16" o.c.	12' - 0"
	24" o.c.	9' - 6"
2 x 10	16" o.c.	15' - 0"
	24" o.c.	12' - 0"
2 x 12	24" o.c.	14' - 0"
4 x 6	12" o.c.	14' - 6"
	16" o.c.	13' - 6"
	24" o.c.	11' - 6"
4 x 8	24" o.c.	15' - 0"
4 x 10	32" o.c.	15' - 0"

**TABLE "B"**  
HEADER SIZING & SPANS  
(DOUGLAS FIR #2 OR BETTER)

JOIST SPAN	HEADER	
	SIZE	SPAN
UPTO 8'-0"	4 X 8	8'-0"
	4 X 10	10'-0"
	4 X 12	11'-6"
	6 X 12	14'-0"
8'-1" - 10'-0"	4 X 8	7'-6"
	4 X 10	9'-6"
	4 X 12	11'-0"
	6 X 12	13'-0"
10'-1" - 12'-0"	4 X 8	7'-0"
	4 X 10	9'-0"
	4 X 12	10'-0"
	6 X 12	12'-0"
12'-1" - 15'-0"	4 X 8	6'-6"
	4 X 10	8'-0"
	4 X 12	9'-6"
	6 X 12	11'-0"

**TABLE "C"**  
LEDGER BOLT SPACING  
(3/8 DIA. X 6" LAG BOLTS - SEE NOTE 1)

DECK JOIST SPAN	SPACING
8'-0" OR LESS	8" O.C.
8'-1" TO 10'-0"	7" O.C.
10'-1" TO 12'-0"	6" O.C.
12'-1" TO 14'-0"	5" O.C.
14'-1" TO 15'-0"	4" O.C.

- NOTES:
1. LEDGER BOLTS SHALL BE 3/8" DIA. X 6" LONG WITH 1/4" DIA. PRE DRILLED HOLES. BOLTS ARE TO BE PLACED STAGGERED.
  2. ALL METAL HARDWARE & SCREWS TO BE GALVANIZED OR OF OTHERWISE APPROVED CORROSION RESISTANCE
  3. MAXIMUM 5' JOIST SPAN IF 2<sup>ND</sup> FLOOR IS CANTILEVERED AT LEDGER.
  4. SHEAR WALLS MAY NOT BE MODIFIED UNLESS STRUCTURAL CALCULATIONS ARE SUBMITTED AND APPROVED BY THE BUILDING DEPARTMENT

**DISCLAIMER:**

ALTERNATE DECK DESIGNS MAY BE POSSIBLE WHEN PROVIDED WITH AN ENGINEERED ANALYSIS. USE OF THIS CONVENTIONAL STANDARD DESIGN IS AT THE USER'S RISK AND CARRIES NO IMPLIED OR INFERRED GUARANTEE AGAINST FAILURE OR DEFECTS.

**WESTERN RIVERSIDE COUNTY CODE UNIFORMITY PROGRAM**



**CITY OF PERRIS**

**BUILDING DEPARTMENT**

**BALCONY/DECK STANDARD**

(951) 443-1029

Fax (951) 657-9685

135 N D ST.

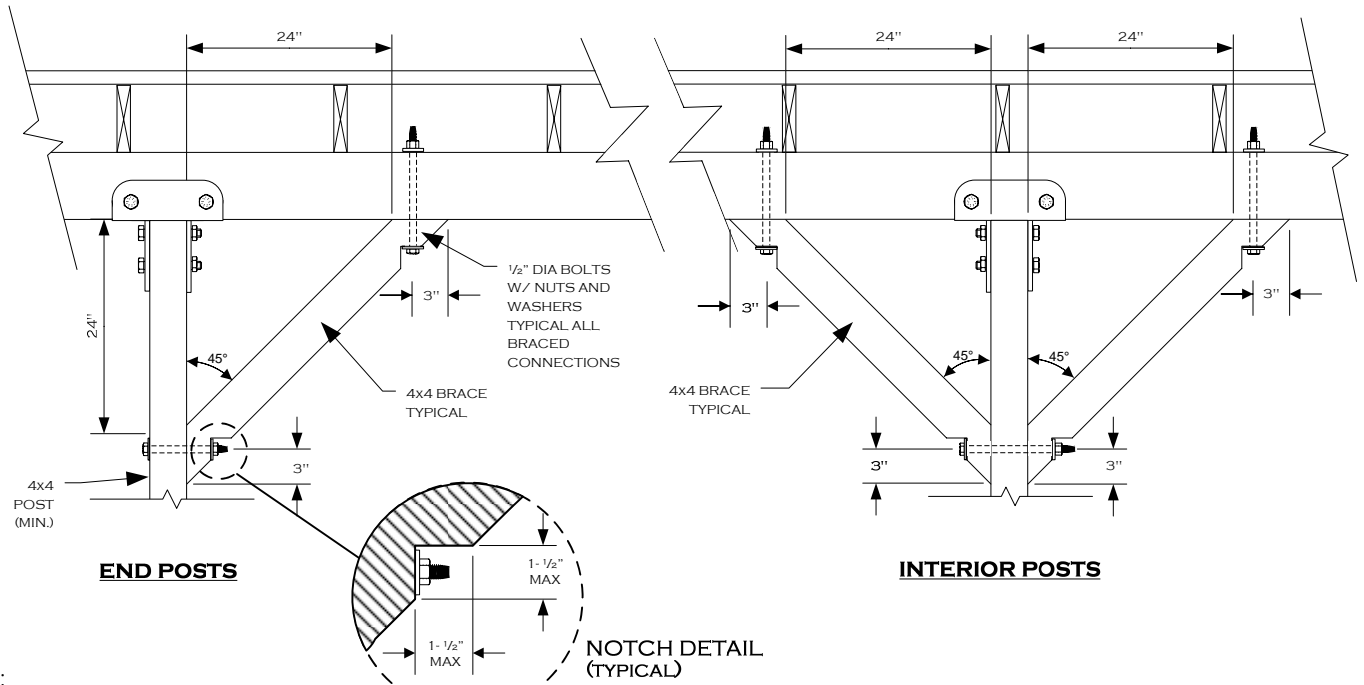
PERRIS CA, 92570

07/27/2006

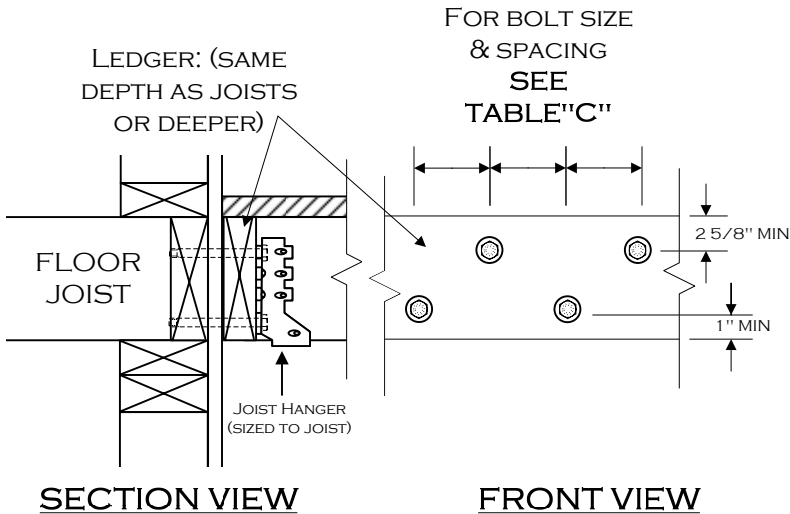
PERDECKFNLVSD

PAGE 1 OF 4

# KNEE BRACE DETAIL (A)

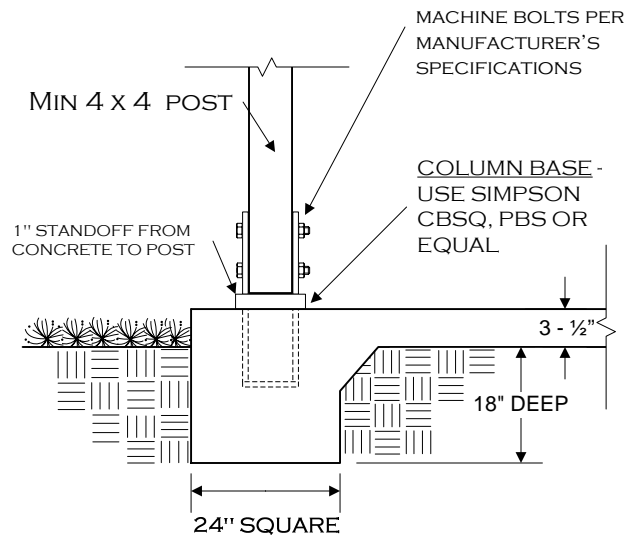


# LEDGER DETAIL (B)



NOTE: THIS DECK CONNECTION DETAIL IS BASED ON THE ASSUMPTION THAT A MINIMUM 1-1/2" THICK WOOD MEMBER IS ADEQUATELY INSTALLED AT ALL EDGES OF THE 2ND FLOOR DIAPHRAGM. IF ANY OTHER MATERIAL IS USED, SUCH AS TJI JOISTS, A SPECIAL ENGINEERED DESIGN WILL BE REQUIRED. IT IS THE OWNER'S RESPONSIBILITY TO VERIFY THE PRESENCE OF THE APPROPRIATE RIM JOIST.

# FOOTING DETAIL (C)



WESTERN RIVERSIDE COUNTY CODE UNIFORMITY PROGRAM



**CITY OF PERRIS**  
**BUILDING DEPARTMENT**  
**BALCONY/DECK STANDARD**

(951) 443-1029

135 N D ST.  
PERRIS CA, 92570

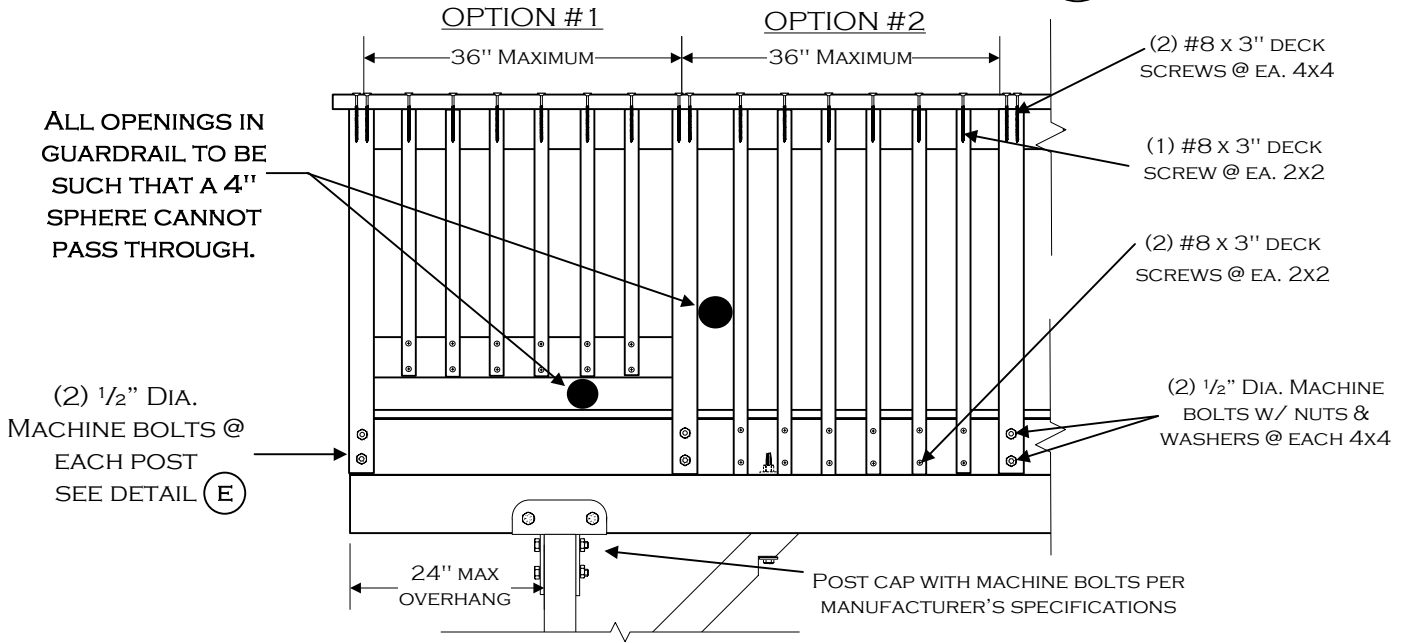
Fax (951) 657-9685

07/27/2006

PERDeckFNL.VSD

PAGE 2 OF 4

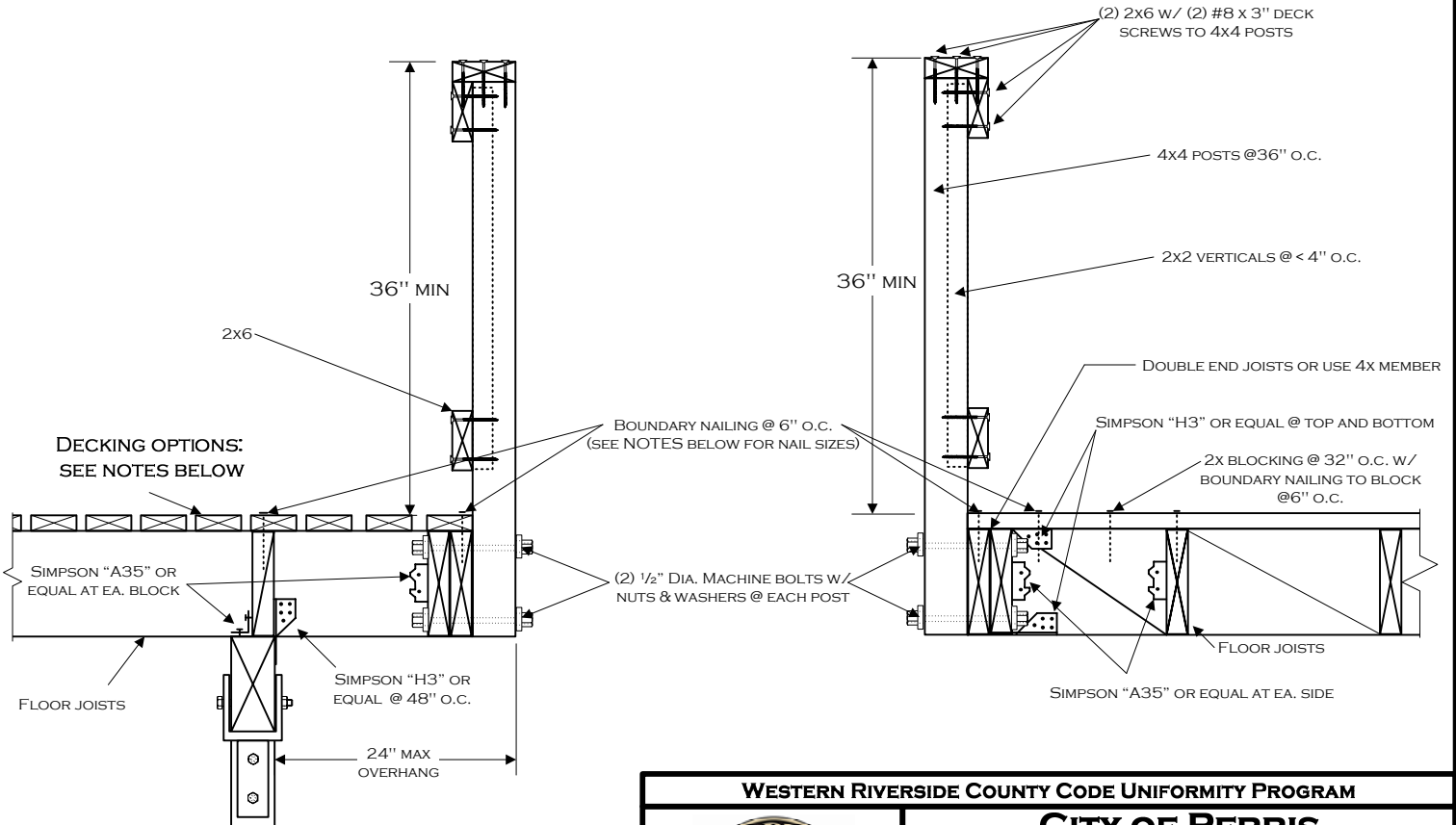
# RAILING, POST, & BEAM DETAIL (D)



# RAILING SECTION VIEWS (E)


GUARDRAIL PERPENDICULAR TO JOISTS

GUARDRAIL PARALLEL TO JOISTS



**NOTE-DECKING OPTIONS ARE AS FOLLOWS:**

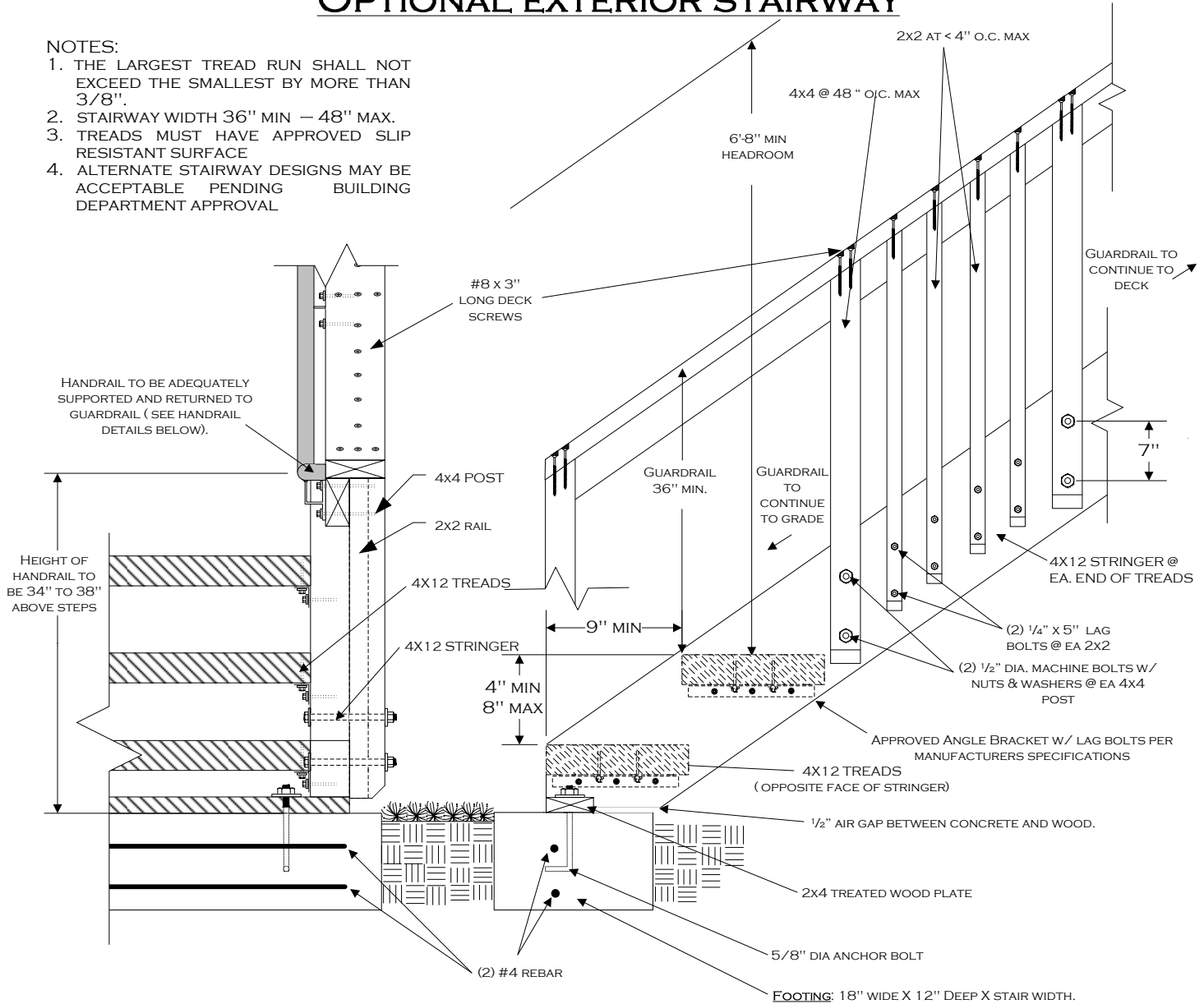
1. 5/8" TONGUE AND GROOVE JOINTED PLYWOOD SECURED WITH 8d NAILS. ALL EDGE NAILING AT 6" O.C. MUST BE COVERED WITH AN APPROVED WEATHER RESISTIVE MATERIAL WALKING SURFACE, AND SLOPED FOR DRAINAGE.
2. 2X6" DECKING SECURED W/ (2) 16d NAILS @ EA. JOIST.

<b>WESTERN RIVERSIDE COUNTY CODE UNIFORMITY PROGRAM</b>			
		<b>CITY OF PERRIS</b>	
<b>BUILDING DEPARTMENT</b>		<b>BALCONY/DECK STANDARD</b>	
(951) 443-1029		135 N D ST. PERRIS CA, 92570	
Fax (951) 657-9685		07/27/2006	PERDeckFNlvSD
		PAGE 3 OF 4	

# OPTIONAL EXTERIOR STAIRWAY

**NOTES:**

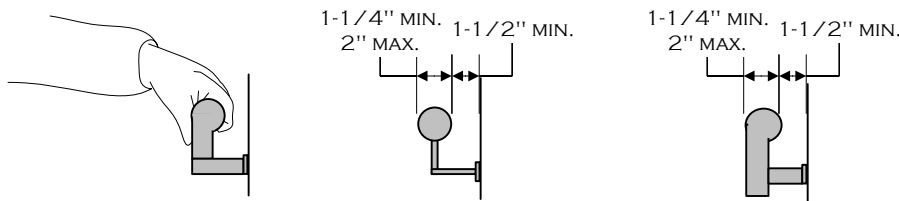
1. THE LARGEST TREAD RUN SHALL NOT EXCEED THE SMALLEST BY MORE THAN 3/8".
2. STAIRWAY WIDTH 36" MIN – 48" MAX.
3. TREADS MUST HAVE APPROVED SLIP RESISTANT SURFACE
4. ALTERNATE STAIRWAY DESIGNS MAY BE ACCEPTABLE PENDING BUILDING DEPARTMENT APPROVAL



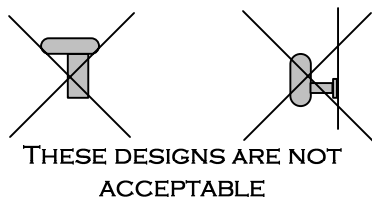
**FRONT VIEW**


**SIDE VIEW**

## HANDRAIL DETAILS



NOTE: OTHER SHAPES MAY BE ACCEPTABLE IF THEY PROVIDE AN EQUIVALENT GRIPPING SURFACE.



<b>WESTERN RIVERSIDE COUNTY CODE UNIFORMITY PROGRAM</b>	
	<b>CITY OF PERRIS</b>
	<b>BUILDING DEPARTMENT</b>
<b>BALCONY/DECK STANDARD</b>	
(951) 443-1029	135 N D St. PERRIS CA, 92570
Fax (951) 657-9685	07/27/2006 PERDECKFNL.VSD PAGE 4 OF 4