

**Appendix H:
Public Services Supporting Information**

THIS PAGE INTENTIONALLY LEFT BLANK

H.1 - Public Services Letters

THIS PAGE INTENTIONALLY LEFT BLANK

April 22, 2022

Matthew Sims, Captain
Riverside County Sheriff's Department
Perris Station
137 North Perris Boulevard,
Perris, CA 92570

Subject: Project Ramona Expressway and Brennan Avenue Warehouse Police Services

Dear Captain Sims:

FirstCarbon Solutions (FCS) is under contract with Seefried Industrial Properties, Inc. to prepare an Initial Study/Mitigated Negative Declaration (IS/MND) for the proposed Ramona Expressway and Brennan Avenue Warehouse Project. As part of the environmental review process, we are consulting with service providers to determine potential project impacts on their ability to deliver public services, including police services.

The 7.60-acre project site is located in the City of Perris, Riverside County, California. The project site is located south of Ramona Expressway between Brennan Avenue and Webster Avenue, and corresponds to Assessor's Parcel Numbers (APN's) 303-020-005, -022, -023, -024, and -025 (Attachment A).

The proposed project would include an approximately 165,371-square-foot warehouse for consumer products, consisting of a 160,371 square-foot warehouse, with a 2,500 square-foot office located on the first floor a 2,500-square-foot mezzanine, 20 dock doors, an outdoor employee break area/seating patio, and an outdoor gym park. The proposed include 68 standard automobile parking spaces, 33 trailer spaces and 29 trailer loading spaces (Attachment B). The proposed project would be operational in 2023 and would employ approximately 68 people.

To assist with the environmental analysis required under the California Environmental Quality Act (CEQA), would you please provide a response to the following questions on the City of Perris County Sheriff's Department letterhead by Friday, May 6, 2022:

We have prepared the following description of the Riverside County Sheriff's Department based on information available online. We would appreciate it if you could review and edit (as needed) for completeness and accuracy.

Police Protection Services

The Riverside County Sheriff's Department operates one main office headquarters. The main office is located at 137 North Perris Boulevard Perris, CA 92570. The Sheriff's Department provides approximately 0.82 officers per 1,000 residents and operates 24 hours per day. According to the City of Perris 2030 General Plan, the Sheriff's Department aims to achieve a

UNITED STATES

T +1 888 826 5814
T +1 714 508 4100
F +1 714 508 4110
E info@fcs-intl.com

Irvine
250 Commerce
Suite 250
Irvine, CA 92602

Bay Area
1350 Treat Boulevard
Suite 380
Walnut Creek, CA 94597

Central Valley
7265 N. First Street
Suite 101
Fresno, CA 93720

Inland Empire
650 E. Hospitality Lane
Suite 125
San Bernardino, CA 92408

Sacramento Valley
2204 Plaza Drive
Suite 210
Rocklin, CA 95765

Utah
2901 Bluegrass Boulevard
Suite 200-44
Lehi, UT 84043

Connecticut
2 Corporate Drive
Suite 450
Shelton, CT 06484

New York
10 Monument Street
Deposit, NY 13754

56 Broome Corporate Parkway
Conklin, NY 13748

CANADA

UNITED KINGDOM

PORTUGAL

FRANCE

KENYA

AUSTRALIA

PHILIPPINES

CHINA

MALAYSIA

SINGAPORE

ratio of approximately 1 officer to every 1,000 residents. The Sheriff's Department consists of 33 sworn officers.

Staffing and Organization

What are the existing staffing levels department-wide and at the station(s) that would serve the project site?

Calls for Service

How many calls for service does the Sheriff's Department respond to annually?

Response Times

Can you please provide the current average response times for emergency calls for service?

1. Do you foresee any potential challenges that the proposed project may present to the Sheriff's Department? This includes concerns related to response times, staffing, etc. Please describe any measures that you would recommend to reduce potential concerns/challenges.
2. Would the Riverside County Sheriff's Department need to construct new facilities or expand existing ones in order to serve the proposed project and the police protection needs of the surrounding community?
3. Do you have any other comments about the potential impacts of this project on the Riverside County Sheriff's Department?

Thank you for your assistance in responding to these questions. Your responses will help us ensure that our analysis is accurate and complete.

Sincerely,

Brittany Hagen, MBA
Assistant Project Manager
FirstCarbon Solutions
967 Kendall Drive, #A-537
San Bernardino, CA 92407

Enc: Attachment A: Local Vicinity Map
Attachment B: Site Plan

UNITED STATES

T +1 888 826 5814
T +1 714 508 4100
F +1 714 508 4110
E info@fcs-intl.com

Irvine
250 Commerce
Suite 250
Irvine, CA 92602

Bay Area
1350 Treat Boulevard
Suite 380
Walnut Creek, CA 94597

Central Valley
7265 N. First Street
Suite 101
Fresno, CA 93720

Inland Empire
650 E. Hospitality Lane
Suite 125
San Bernardino, CA 92408

Sacramento Valley
2204 Plaza Drive
Suite 210
Rocklin, CA 95765

Utah
2901 Bluegrass Boulevard
Suite 200-44
Lehi, UT 84043

Connecticut
2 Corporate Drive
Suite 450
Shelton, CT 06484

New York
10 Monument Street
Deposit, NY 13754

56 Broome Corporate Parkway
Conklin, NY 13748

CANADA

UNITED KINGDOM

PORTUGAL

FRANCE

KENYA

AUSTRALIA

PHILIPPINES

CHINA

MALAYSIA

SINGAPORE

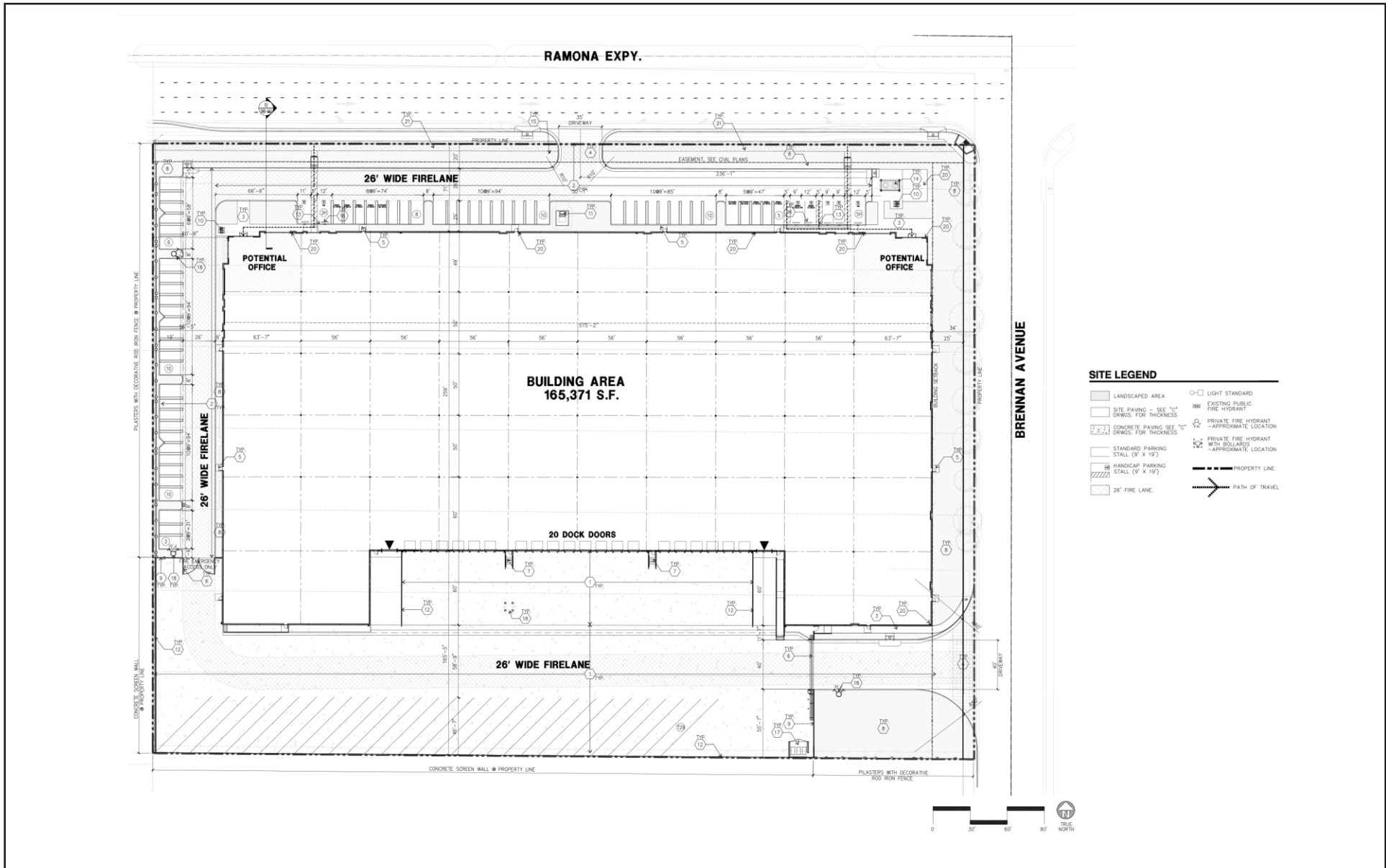
**Attachment A:
Local Vicinity Map**



Source: Bing Aerial Imagery.



**Attachment B:
Site Plan**



Source: HPA Architecture

**FIRSTCARBON
SOLUTIONS™**

41150038 • 04/2022 | 5_site_plan.cdr

**Exhibit 5
Site Plan**

SEEFRIED INDUSTRIAL PROPERTIES, INC.
RAMONA EXPRESSWAY AND BRENNAN AVENUE WAREHOUSE PROJECT
INITIAL STUDY/MITIGATED NEGATIVE DECLARATION

April 22, 2022

Justin McGough, Battalion Chief
Riverside County Fire Department
County Station 90
333 Placentia Avenue,
City of Perris CA 92571

Subject: Ramona Expressway and Brennan Avenue Warehouse Project Fire Services

Dear Chief McGough:

FirstCarbon Solutions (FCS) is under contract with Seefried Industrial Properties, Inc. to prepare an Initial Study/Mitigated Negative Declaration (IS/MND) for the proposed Ramona Expressway and Brennan Avenue Warehouse Project. As part of the environmental review process, we are consulting with service providers to determine potential project impacts on their ability to deliver public services, including fire protection services.

The 7.60-acre project site is located in the City of Perris, Riverside County, California. The project site is located south of Ramona Expressway between Brennan Avenue and Webster Avenue and corresponds to Assessor's Parcel Numbers (APN's) 303-020-005, -022, -023, and -025 (Attachment A).

The proposed project would include an approximately 165,371-square-foot warehouse for consumer products, consisting of a 160,371 square-foot warehouse, with a 2,500 square-foot office located on the first floor a 2,500-square-foot mezzanine, 20 dock doors, an outdoor employee break area/seating patio, and an outdoor gym park. The proposed include 68 standard automobile parking spaces, 33 trailer spaces and 29 trailer loading spaces (Attachment B). The proposed project would be operational in 2023 and would employ approximately 68 people.

To assist with the environmental analysis required under the California Environmental Quality Act (CEQA), would you please provide a response to the following questions on Riverside County Fire Department letterhead by Friday, May 6, 2022:

1. We have prepared the following description of the Riverside County Fire Department based on information available online. We would appreciate it if you could review and edit (as needed) for completeness and accuracy.

Fire Protection Services

The Riverside County Fire Department provides fire protection, non-emergency medical services, and public assistance to areas of Riverside County. The Fire Department is headquartered at 333 Placentia Avenue in the City of Perris CA 92571.

UNITED STATES

T +1 888 826 5814
T +1 714 508 4100
F +1 714 508 4110
E info@fcs-intl.com

Irvine
250 Commerce
Suite 250
Irvine, CA 92602

Bay Area
1350 Treat Boulevard
Suite 380
Walnut Creek, CA 94597

Central Valley
7265 N. First Street
Suite 101
Fresno, CA 93720

Inland Empire
650 E. Hospitality Lane
Suite 125
San Bernardino, CA 92408

Sacramento Valley
2204 Plaza Drive
Suite 210
Rocklin, CA 95765

Utah
2901 Bluegrass Boulevard
Suite 200-44
Lehi, UT 84043

Connecticut
2 Corporate Drive
Suite 450
Shelton, CT 06484

New York
10 Monument Street
Deposit, NY 13754

56 Broome Corporate Parkway
Conklin, NY 13748

CANADA

UNITED KINGDOM

PORTUGAL

FRANCE

KENYA

AUSTRALIA

PHILIPPINES

CHINA

MALAYSIA

SINGAPORE

Stations

Of the 9 fire stations in the County, it appears the closest station to the project site is County Station 1, which is 2.7 miles southeast of the project site.

[Please provide details in the table below, if known].

Station No.	Address	Distance from Project Site	Apparatus	
			Quantity	Equipment
1	333 Placentia Ave. in the City of Perris CA 92571	2.7 miles		
2	21510 Pinewood Street, Perris CA 92570	3 miles		
3	210 W San Jacinto Ave. Perris, CA 92570	3.91 miles		

Staffing and Organization

What are the existing staffing levels department-wide and at the station(s) that would serve the project site?

Apparatus

What is the current number of firefighters, EMT personnel, engines, hook and ladder trucks, etc.?

Calls for Service

Can you please provide an estimate of the annual number of calls for service the proposed project would be expected to generate? If possible, please provide an estimate by type of call (e.g., EMS, fire, etc.)

Response Times

Can you please provide the current average response times for emergency calls for service as a whole and for the station(s) located nearest to the project site?

Aid Agreements

Are there any existing or planned mutual aid agreements with other agencies?

2. Do you foresee any potential challenges that the proposed project may present to the Department? This includes concerns related to response times, staffing, apparatus,

UNITED STATES

T +1 888 826 5814
T +1 714 508 4100
F +1 714 508 4110
E info@fcs-intl.com

Irvine
250 Commerce
Suite 250
Irvine, CA 92602

Bay Area
1350 Treat Boulevard
Suite 380
Walnut Creek, CA 94597

Central Valley
7265 N. First Street
Suite 101
Fresno, CA 93720

Inland Empire
650 E. Hospitality Lane
Suite 125
San Bernardino, CA 92408

Sacramento Valley
2204 Plaza Drive
Suite 210
Rocklin, CA 95765

Utah
2901 Bluegrass Boulevard
Suite 200-44
Lehi, UT 84043

Connecticut
2 Corporate Drive
Suite 450
Shelton, CT 06484

New York
10 Monument Street
Deposit, NY 13754

56 Broome Corporate Parkway
Conklin, NY 13748

CANADA

UNITED KINGDOM

PORTUGAL

FRANCE

KENYA

AUSTRALIA

PHILIPPINES

CHINA

MALAYSIA

SINGAPORE

fire stations, etc. Please describe any measures that you would recommend to reduce potential concerns/challenges.

3. Would the Riverside County Fire Department need to construct new facilities or expand existing ones in order to serve the proposed project and the fire protection needs of the surrounding community?
4. Do you have any other comments about the potential impacts of this project on the Riverside County Fire Department?

Thank you for your assistance in responding to these questions. Your responses will help us ensure that our analysis is accurate and complete.

Sincerely,

Brittany Hagen, MBA
Assistant Project Manager
FirstCarbon Solutions
967 Kendall Drive, #A-537
San Bernardino, CA 92407

Enc: Attachment A: Local Vicinity Map
Attachment B: Site Plan

UNITED STATES

T +1 888 826 5814
T +1 714 508 4100
F +1 714 508 4110
E info@fcs-intl.com

Irvine
250 Commerce
Suite 250
Irvine, CA 92602

Bay Area
1350 Treat Boulevard
Suite 380
Walnut Creek, CA 94597

Central Valley
7265 N. First Street
Suite 101
Fresno, CA 93720

Inland Empire
650 E. Hospitality Lane
Suite 125
San Bernardino, CA 92408

Sacramento Valley
2204 Plaza Drive
Suite 210
Rocklin, CA 95765

Utah
2901 Bluegrass Boulevard
Suite 200-44
Lehi, UT 84043

Connecticut
2 Corporate Drive
Suite 450
Shelton, CT 06484

New York
10 Monument Street
Deposit, NY 13754

56 Broome Corporate Parkway
Conklin, NY 13748

CANADA

UNITED KINGDOM

PORTUGAL

FRANCE

KENYA

AUSTRALIA

PHILIPPINES

CHINA

MALAYSIA

SINGAPORE

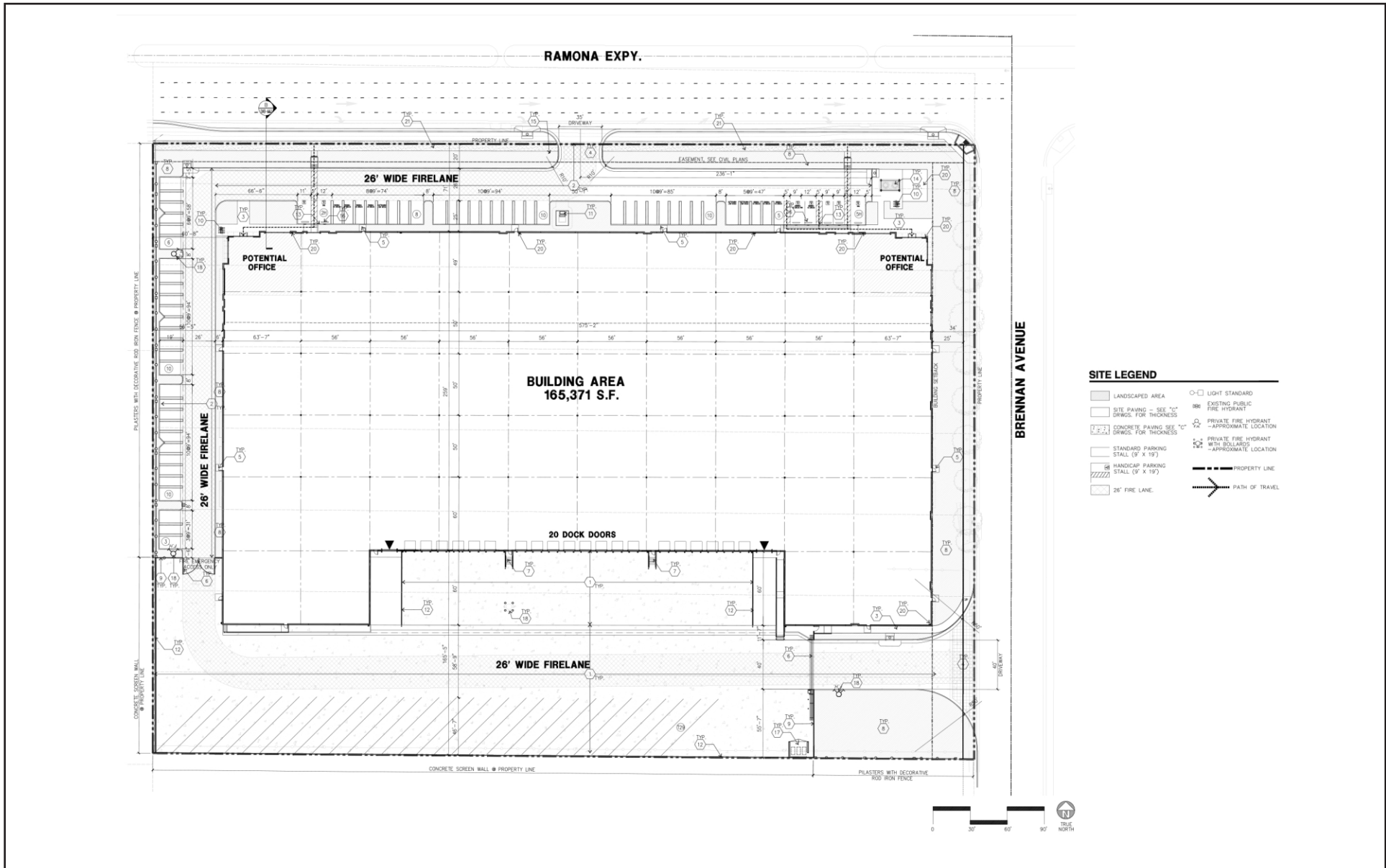
**Attachment A:
Local Vicinity Map**



Source: Bing Aerial Imagery.



**Attachment B:
Site Plan**



Source: HPA Architecture

THIS PAGE INTENTIONALLY LEFT BLANK

H.2 - Public Service Letter Responses

No Responses Received To Date

THIS PAGE INTENTIONALLY LEFT BLANK