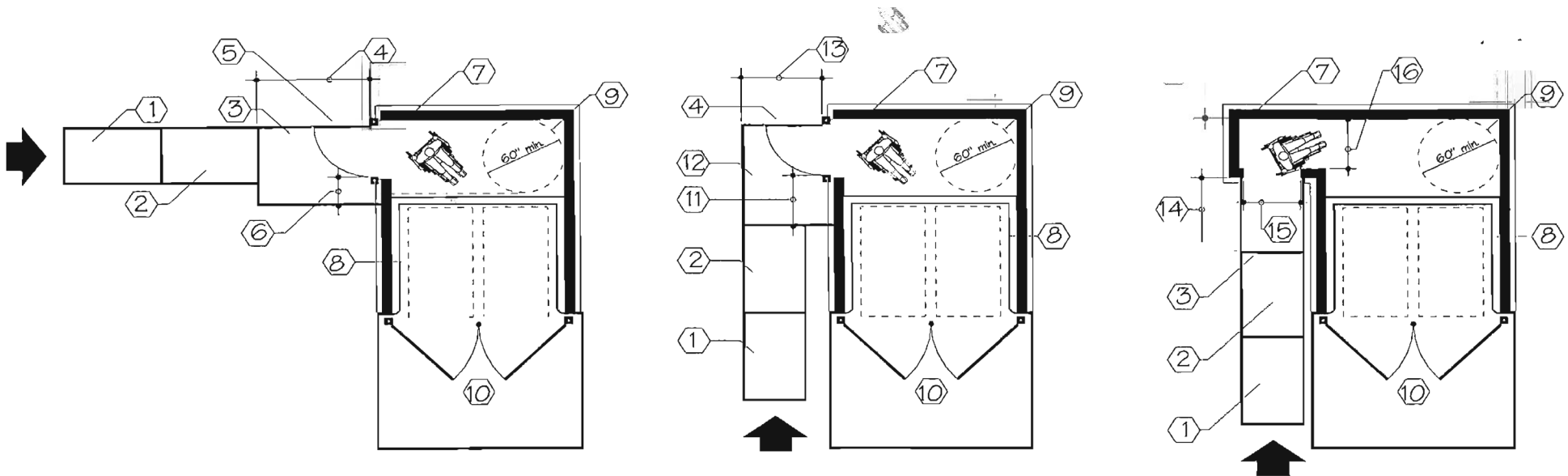


CITY OF PERRIS  
BUILDING DIVISION



# ACCESSIBLE TRASH ENCLOSURES

## KEYNOTES

- |   |  |    |   |
|---|--|----|---|
| 1 | LANDING @ LOWER LEVEL (MIN. 6'-0" L.)        | 9  | WHEELCHAIR TURNING CIRCLE (MIN. 60" DIA.) |
| 2 | MIN. 48" WIDE RAMP @ MAX. 1:12 (8.33%) SLOPE | 10 | TRASH ENCLOSURE GATES                     |
| 3 | LANDING @ UPPER LEVEL (MIN. 5'-0" L.)        | 11 | MIN. 42" STRIKE-EDGE CLEARANCE            |
| 4 | GATE WIDTH + 42" MIN.                        | 12 | LEVEL LANDING                             |
| 5 | GATE (MIN. 3'-0" WIDTH)                      | 13 | MIN. 5'-0"                                |
| 6 | MIN. 2'-0" STRIKE-EDGE CLEARANCE             | 14 | MIN. 5'-0"                                |
| 7 | TRASH ENCLOSURE WALLS                        | 15 | MIN. 42" CLEAR                            |
| 8 | TRASH BINS                                   | 16 | MIN. 48" CLEAR                            |