



Green Jobs & Clean Communities

P.O. Box 79222
Corona, CA 92877

To: City of Perris City Council

From: Golden State Environmental Justice Alliance

Subject: DPR 21-00005/Duke Warehouse

Patterson and Nance Project EIR

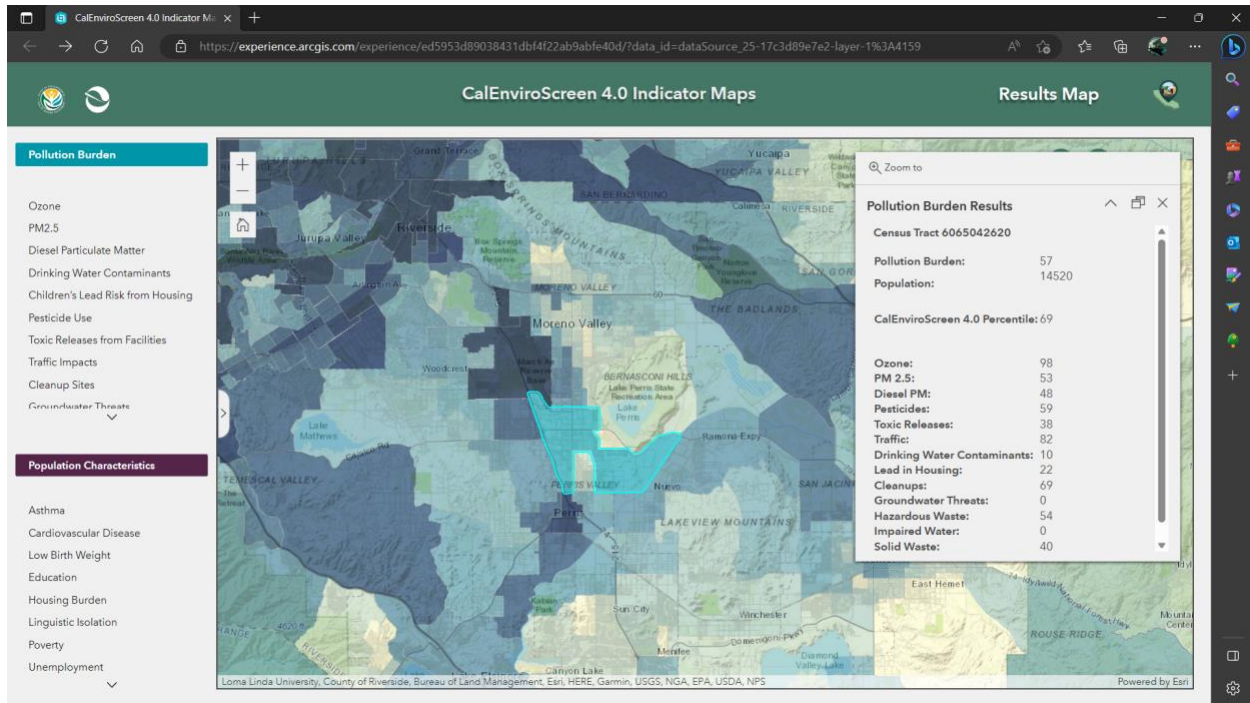
This letter is to serve as further comment in addition to all previously submitted comments and documents by Golden State Environmental Justice Alliance.

CalEnviroScreen Information

CalEnviroScreen is a mapping tool that helps identify California communities that are most affected by many sources of pollution, and where people are often especially vulnerable to pollution's effects. CalEnviroScreen uses environmental, health, and socioeconomic information to produce scores for every census tract in the state. The scores are mapped so that different communities can be compared. An area with a high score is one that experiences a much higher pollution burden than areas with low scores. CalEnviroScreen ranks communities based on data that are available from state and federal government sources. CalEnviroScreen is updated and maintained by The Office of Environmental Health Hazard Assessment, on behalf of the California Environmental Protection Agency.

CalEnviroScreen Data on : DPR 21-00005/Duke Warehouse Patterson and Nance Project EIR Project Location/Area

The above listed project is in census tract **6065042620** . Overall, when compared to other census tracts, the project site census tract is in the 69th percentile regarding pollution. As far as pollution burden is concerned, this census tract is in the 57th percentile. In terms of Ozone, this census tract is in the 98th percentile, Particulate Matter 2.5 53rd percentile, Diesel Particulate Matter 48th percentile, Toxic Releases 38th percentile and Traffic 82nd percentile to name a few.



Conclusion

Consider the above referenced information when making this important decision. Realize that you and the citizens of this area face some of the **WORST POLLUTION** in the entire state of California.

It is the responsibility of the City's elected and appointed officials to make environmentally responsible development decisions. Based on the CalEnviroScreen data, this is more than sufficient evidence of the further air quality impacts that the citizenry of Perris will continue to encounter with further development of another warehouse. We are not against development, as we believe it is necessary for further economic growth in our current society. Development needs to be conducted with the highest of expectations to ensure the local population does not suffer further air quality burdens.

We stand by our comments and believe the EIR is flawed and should be redrafted and recirculated for public review.

Respectfully Submitted,

Steven Piepkorn

Steven Piepkorn
GSEJA

Source -

https://experience.arcgis.com/experience/4af93cf9888a424481d2868391af2d82/page/home/?data_id=dataSource_2-1754d6afdb4-layer-9%3A7306

Glossary of Terms

Ozone - Amount of daily maximum 8-hour Ozone concentration

Particulate Matter 2.5 - Annual mean PM 2.5 concentrations

Diesel Particulate Matter - Diesel PM emissions from on-road and non-road sources

Toxic Releases - Toxicity-weighted concentrations of modeled chemical releases to air from facility emissions and off-site incineration.

Traffic -Traffic density, in vehicle-kilometers per hour per road length, within 150 meters of the census tract boundary.