



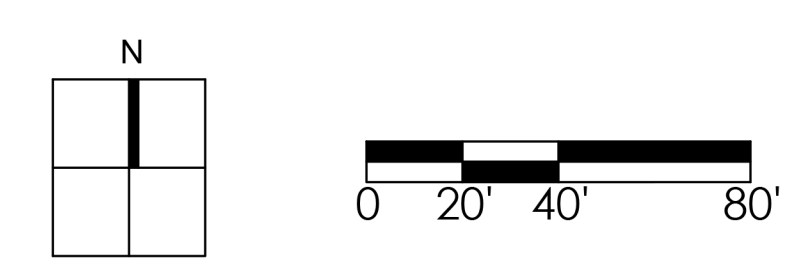
**PLANTING LEGEND**

TREES					
SYMBOL	BOTANICAL/COMMON NAME	SIZE	QTY	WUCOLS	REMARKS
	<i>Cercidium 'Desert Museum'</i> Blue Palo Verde	36" Box	7	L	Multi
	<i>Chilopsis lasiolepis</i> Chilopsis	24" Box	23	L	Standard
	<i>Chilopsis linearis</i> Desert Willow	24" Box	35	L	Multi
	<i>Lagotisoma l'Herminieri</i> Cape Myrtle	15 Gal	39	M	Standard
	<i>Platanus acerifolia</i> London Plane	24" Box	9	M	Standard
	<i>Pinus edulis</i> Alghan Pine	24" Box	42	L	Standard
	<i>Prosopis juliflora</i> Chicoan Mesquite	36" Box	14	M	Multi
	<i>Ulmus parvifolia</i> Chinese Elm	36" Box	16	L	Standard
	<i>Tristramia conferta</i> Bastard Elm	15 Gal	113	M	Standard

SHRUBS					
SYMBOL	BOTANICAL/COMMON NAME	SIZE	QTY	WUCOLS	REMARKS
	<i>Baccharis p. 'Cerulea'</i> Coyote Bush	5 Gal	127	L	
	<i>Cassia phytolobina</i> Shoreland Cassia	5 Gal	73	L	
	<i>Heteromeles arbutifolia</i> Toyon	5 Gal	118	M	
	<i>Mulberry 'Golden Wonder'</i> Dwarf Mulberry	5 Gal	118	M	
	<i>Salvia 'Athen Chalkboard'</i> Athen Chalkboard Sage	5 Gal	100	L	
	<i>Salvia rosmarinifolia</i> Autumn Sage	5 Gal	262	L	
	<i>Salvia leucantha</i> Mexican Sage	5 Gal	87	L	
	<i>Westringia bulbosa</i> Coast Rosemary	5 Gal	74	L	
	<i>Westringia 'Grey Box'</i> Dwarf Coast Rosemary	5 Gal	20	L	
	<i>Westringia 'Narrowleaf Gem'</i> Wynnable Coast Rosemary	5 Gal	100	L	

GROUNDCOVER					
SYMBOL	BOTANICAL/COMMON NAME	SIZE	SPACING	WUCOLS	REMARKS
	<i>Rosa rugosa 'Harrington Carpet'</i> Prostrate Rosemary	1 Gal	48" O.C.	L	
	<i>Lonicera 'Maitiana'</i> HBI's Honeysuckle	1 Gal	48" O.C.	L	
	<i>Asplenium nidus 'Lily Bell'</i> Dwarf Asplenium	1 Gal	8" O.C.	L	
	<i>Baccharis p. 'Pigeon Point'</i> Dwarf Coyote Bush	1 Gal	6" O.C.	L	
	<i>Curtis m. 'Striped Carpet'</i> Prostrate Natal Plum	1 Gal	36" O.C.	M	
	<i>Mossium acaule</i> Mossium	1 Gal	36" O.C.	L	

Turf Block / Grass Filled Grasspave2 Units  
 SPECIFICATION:  
 Unit Size: 20" X 20" X 1", available in 8 standard roll sizes.  
 Unit Weight: 510 grams (18oz) for 2.0 KG (4.5 pounds)  
 Strength: 402 KG/CM (5720 PSI)  
 Color: Black (standard)  
 Resin: 100% post-consumer recycled HDPE/LDPE



# Ramona and Webster Ave

22-141  
 10.21.22  
 04.12.23  
 06.28.23

Perris, California



**HUNTER LANDSCAPE**

711 FEE ANA STREET PLACENTIA, CA 92870  
 714.986.2400 FAX 714.986.2408