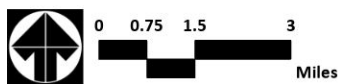
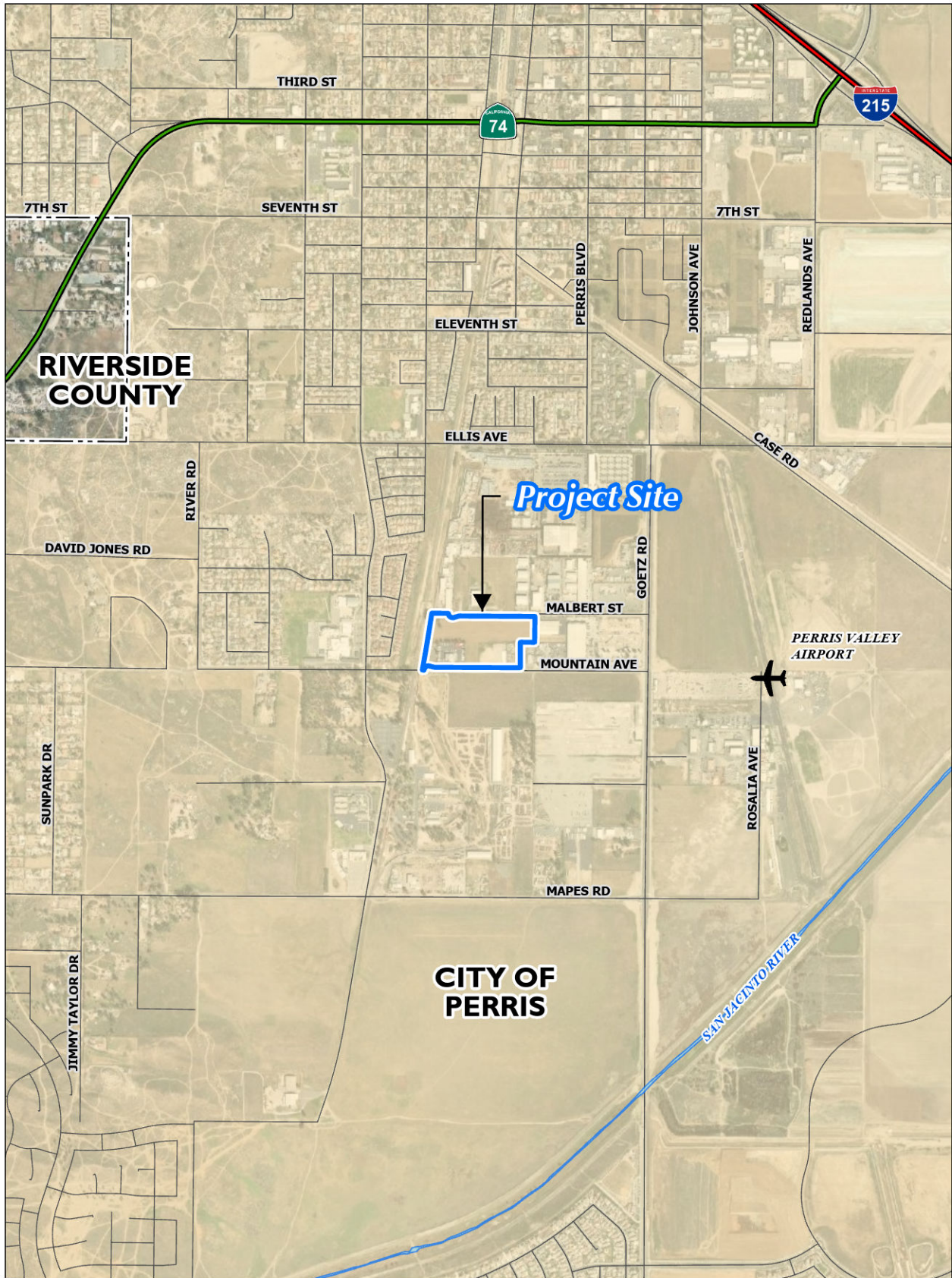


Source(s): Esri, RCIT (2023)

Figure 1

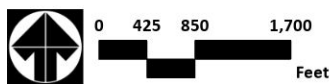


Regional Map

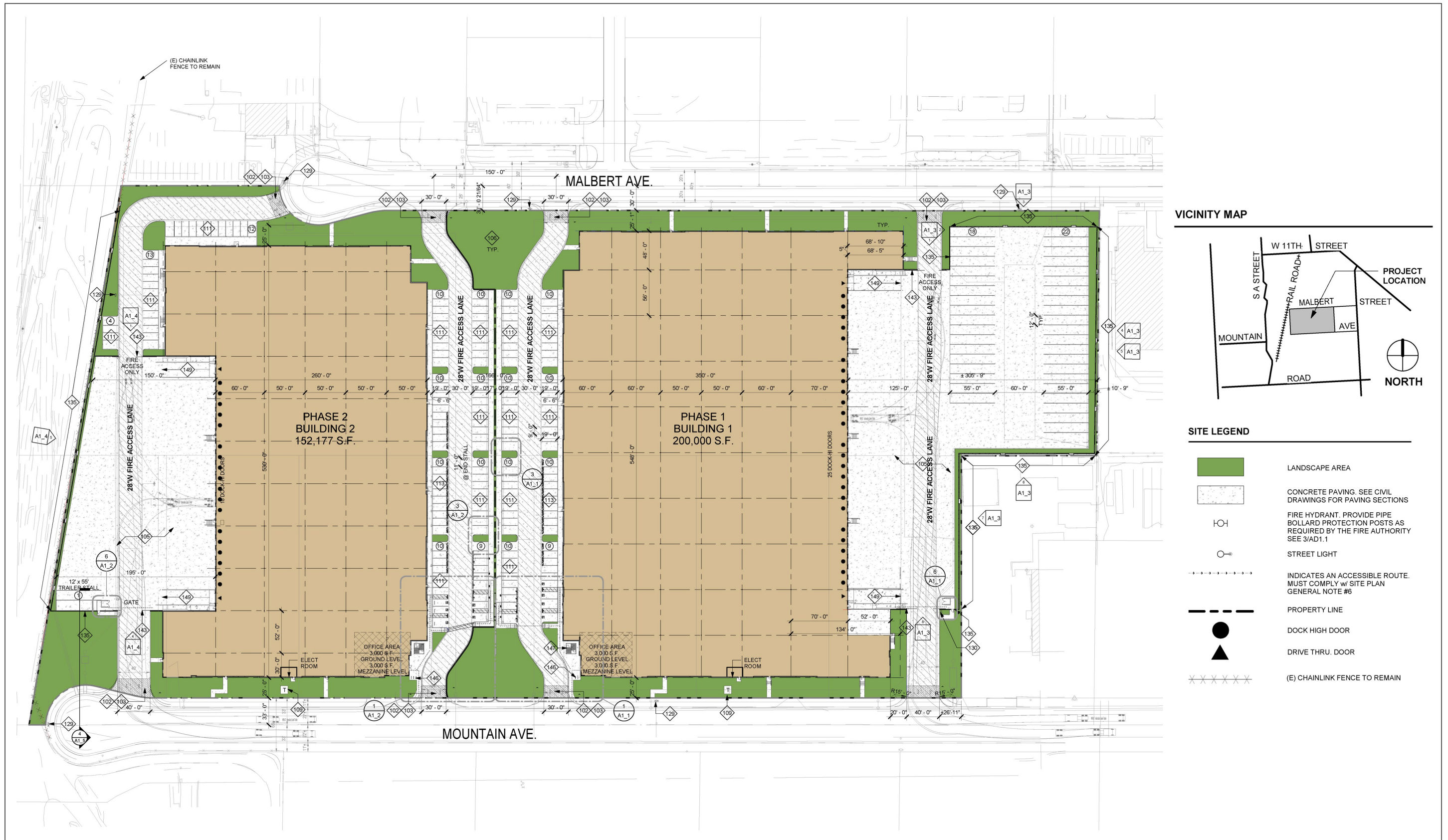


Source(s): Esri, RCIT (2023)

Figure 2



Vicinity Map



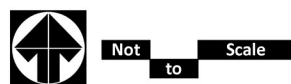
VICINITY MAP

SITE LEGEND

- LANDSCAPE AREA
- CONCRETE PAVING. SEE CIVIL DRAWINGS FOR PAVING SECTIONS
- FIRE HYDRANT. PROVIDE PIPE BOLLARD PROTECTION POSTS AS REQUIRED BY THE FIRE AUTHORITY SEE 3/AD1.1
- STREET LIGHT
- INDICATES AN ACCESSIBLE ROUTE. MUST COMPLY W/ SITE PLAN GENERAL NOTE #6
- PROPERTY LINE
- DOCK HIGH DOOR
- DRIVE THRU. DOOR
- (E) CHAINLINK FENCE TO REMAIN

Source(s): Herdman Architecture + Design, Inc. (09-13-2023)

Figure 3





Source(s): Casc Engineering & Consulting (09-25-2023), Esri, Nearmap Imagery (May 2023), RCIT (2023)

Figure 4

Proposed Offsite Sewer Alignment