

Appendix J
Photometric Plan

FOR
REFERENCE
ONLY

12/22/22

PILOT COMPANY
DESIGN DEPARTMENT
5508 LONAS ROAD
KNOXVILLE, TENNESSEE 37909
(865) 588-7488



SITE PLAN
PHOTOMETRIC
FLYING J TRAVEL CENTER
ETHANAC RD
PERRIS, CA 92570

DATE: 07/15/22	DRAWN BY: JBP	PROJECT: 1332-01
DESIGN BY: JBP	REVISION DESCRIPTION:	PAGE#: 21375
DATE: REV:		INT:

CONFIDENTIAL
NO USE OR DISSEMINATION OF THIS DRAWING IS PERMITTED, EXCEPT AS EXPRESSLY AUTHORIZED BY PILOT COMPANY.

SHEET:

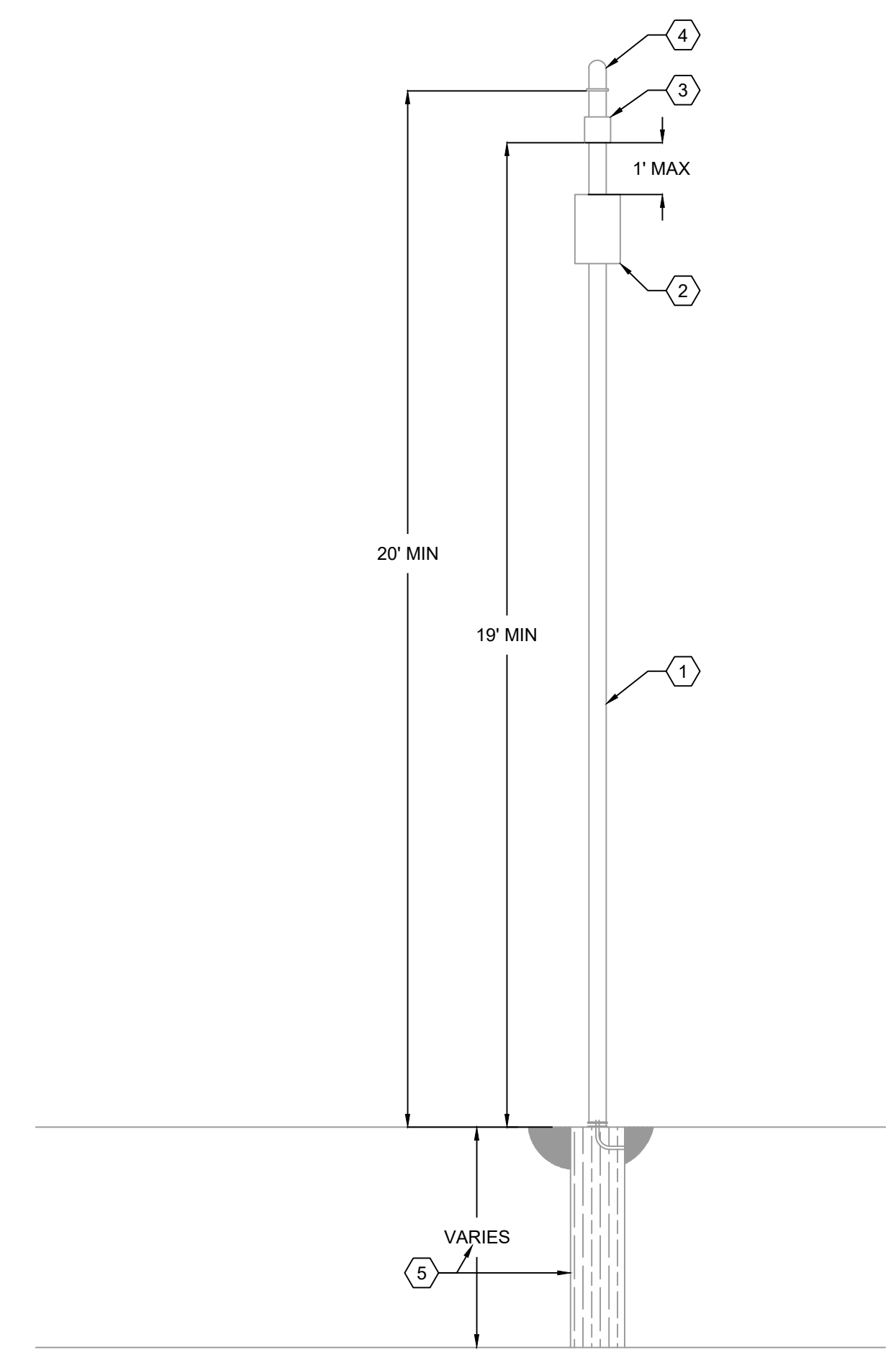
ES1.2

CONTRACTOR NOTE

1. THIS LIGHTING DESIGN IS BASED ON INFORMATION SUPPLIED BY OTHERS TO PAGE INTERWORKS, PA. SITE DETAILS PROVIDED HEREON ARE REPRODUCED ONLY AS A VISUALIZATION AID. FIELD DEVIATIONS MAY SIGNIFICANTLY AFFECT PREDICTED PERFORMANCE. PRIOR TO INSTALLATION, CRITICAL SITE INFORMATION (POLE LOCATIONS, ORIENTATION, MOUNTING HEIGHT, ETC.) SHOULD BE COORDINATED WITH THE CONTRACTOR AND/OR SPECIFIER RESPONSIBLE FOR THE PROJECT.
2. LUMINAIRE DATA IS TESTED TO INDUSTRY STANDARDS UNDER LABORATORY CONDITIONS. OPERATING VOLTAGE AND NORMAL MANUFACTURING TOLERANCES OF LAMP, BALLAST, AND LUMINAIRE MAY AFFECT FIELD RESULTS.

WIFI POWER POLE NOTES

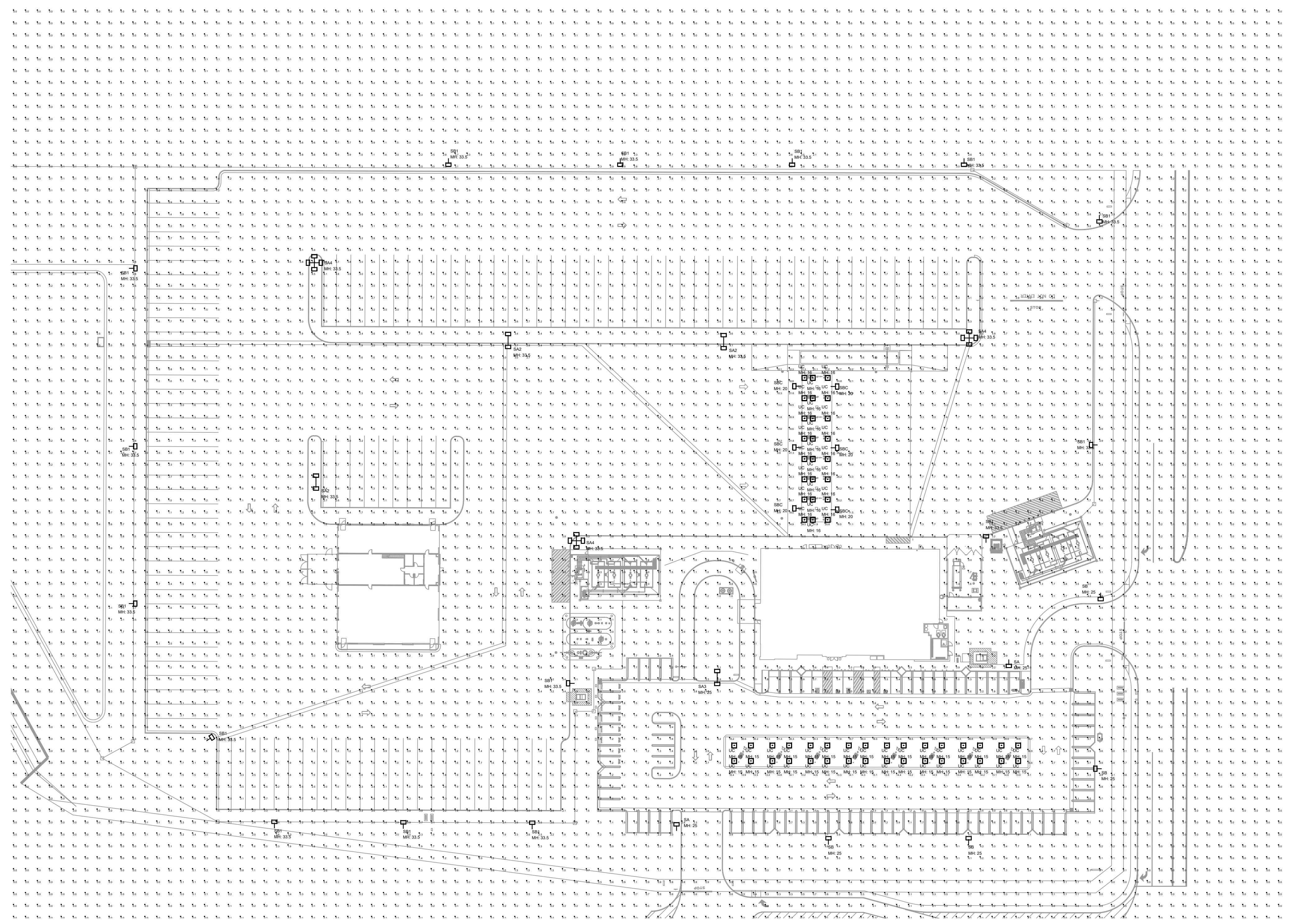
1. CONTRACTOR IS TO SUPPLY 4"x4"x20' ALUMINUM POLE TO MOUNT WIRELESS ACCESS POINT EQUIPMENT TO IF SITE LIGHTING POLE IS NOT AVAILABLE.
2. CONTRACTOR SHALL PROVIDE A 12"x12"x6" NEMA 3R JUNCTION BOX. JUNCTION BOX SHALL HOUSE THE OWNER SUPPLIED CISCO POWER INJECTOR. PROVIDE A CONTINUOUSLY POWERED 110V GFCI RECEPTACLE MOUNTED INSIDE THE JUNCTION BOX TO POWER THE CISCO POWER INJECTOR. JUNCTION SHALL BE NO MORE THAN 1' AWAY FROM THE WIRELESS ACCESS POINT (CISCO MR66).
3. CONTRACTOR TO INSTALL OWNER SUPPLIED WIRELESS ACCESS POINT (ROUTER, CISCO MR66) ABOVE THE NEMA 3R JUNCTION BOX. ROUTE CAT 5E CABLES FOR CISCO POWER INJECTOR OUTPUT INTO WIRELESS ACCESS POINT.
4. CONTRACTOR IS TO INSTALL OWNER SUPPLIED ANTENNA AT LEAST 20' ABOVE GRADE. ANTENNA HAS FOUR (4) CABLES THAT WILL CONNECT TO THE FOUR (4) INPUT PORTS ON THE WIRELESS ACCESS POINT.
5. CONTRACTOR SHALL VERIFY POLE BASE REQUIREMENTS WITH STRUCTURAL ENGINEER BASED ON SITE SOIL CONDITIONS.



2 WiFi POWER POLE
SCALE: 3/8" = 1'-0"

Symbol	Qty	Label	Arrangement	Total Lamp Lumens	LLF	Description
UC	56	UC	Single	N.A.	1.000	CPY250-C-8L-50K7-F-UL-xxx-xxxxx CONFIGURED FROM CPY250-C-13L-57K7-F-UL-xxx-xxx-x
SBC	15	SBC	Single	N.A.	0.810	OSQL-B-30L-57K7-4M-U-xx-xx-xxxxx CONFIGURED FROM OSQ-A-xx-4ME-U-40K-UL-xxxxx
SB1	4	SB1	Single	N.A.	0.810	OSQL-B-30L-57K7-4M-U-xx-xx-xxxxx CONFIGURED FROM OSQ-A-xx-4ME-U-40K-UL-xxxxx
SB	4	SB	Single	N.A.	0.810	OSQL-B-30L-57K7-4M-U-xx-xx-xxxxx CONFIGURED FROM OSQ-A-xx-4ME-U-40K-UL-xxxxx
SA4	3	SA4	4 @ 90 Degrees	N.A.	0.810	OSQL-B-30L-57K7-5M-U-xx-xx-xxxxx CONFIGURED FROM OSQ-B-30L-40K7-5M-UL-xx-BZ-R
SA3	1	SA3	Back-Back	N.A.	0.810	OSQL-B-30L-57K7-5M-U-xx-xx-xxxxx CONFIGURED FROM OSQ-B-30L-40K7-5M-UL-xx-BZ-R
SA2	3	SA2	Back-Back	N.A.	0.810	OSQL-B-30L-57K7-5M-U-xx-xx-xxxxx CONFIGURED FROM OSQ-B-30L-40K7-5M-UL-xx-BZ-R
SA	2	SA	Single	N.A.	0.810	OSQL-B-30L-57K7-5M-U-xx-xx-xxxxx CONFIGURED FROM OSQ-B-30L-40K7-5M-UL-xx-BZ-R

Label	CalcType	Units	Avg	Max	Min	Avg/Min	Max/Min
CalcPts_1	illuminance	Fc	0.58	31.9	0.0	N.A.	N.A.



1 SITE PLAN - PHOTOMETRIC
SCALE: 1" = 50'-0"

PAGE
INTERWORKS, P.A.
ENGINEERS & CONSULTANTS
923 MAIN STREET, NORTH WILKESBORO, NC 28659
PHONE: 336-667-4225