

RESOLUTION NUMBER 6190

A RESOLUTION OF INTENTION OF THE CITY COUNCIL OF THE CITY OF PERRIS TO ESTABLISH COMMUNITY FACILITIES DISTRICT NO. 2022-2 (PERRIS LOGISTICS CENTER) OF THE CITY OF PERRIS AND TO AUTHORIZE THE LEVY OF A SPECIAL TAX WITHIN COMMUNITY FACILITIES DISTRICT NO. 2022-2 (PERRIS LOGISTICS CENTER) OF THE CITY OF PERRIS

WHEREAS, the City Council (the “Council”) of the City of Perris (the “City”) has received a petition (including consent and waiver) (the “Petition”) from IDIL Perris North 3, L.P., a Delaware limited partnership, and IDIL Perris Fulfillment Center LP, a Delaware limited partnership, requesting the institution of proceedings for formation of a community facilities district pursuant to the Mello-Roos Community Facilities Act of 1982, as amended, commencing with Section 53311 of the Government Code of the State of California (the “Act”); and

WHEREAS, the Council has determined that the Petition complies with the requirements of Government Code Section 53318 and now intends to form Community Facilities District No. 2022-2 (Perris Logistics Center) of the City of Perris; and

WHEREAS, the Council desires to adopt this resolution of intention as provided in Section 53321 of the Act to establish a community facilities district consisting of the territory described in Exhibit “A” hereto and incorporated herein by this reference, which the Council hereby determines shall be known as “Community Facilities District No. 2022-2 (Perris Logistics Center) of the City of Perris” (the “Community Facilities District No. 2022-2” or the “District”) pursuant to the Act to finance (1) the purchase, construction, modification, expansion, improvement or rehabilitation of certain real or other tangible property described in Exhibit “B” hereto and incorporated herein by this reference, including all furnishings, equipment and supplies related thereto; (2) the payment of development and other fees and the acquisition or construction of public facilities (collectively, the “Facilities”), which Facilities have a useful life of five years or longer; and (3) the incidental expenses to be incurred in connection with financing the Facilities and forming and administering the District (the “Incidental Expenses”); and

WHEREAS, it is the intention of the Council to consider financing the Facilities and the Incidental Expenses through the formation of the District and the sale of bonded indebtedness in an amount not to exceed \$25,000,000 and the levy of a special tax within the District to finance the Facilities and the Incidental Expenses and to pay debt service on the bonded indebtedness incurred by such District, provided that the bond sales and special tax levies are approved at an election to be held within the District.

NOW, THEREFORE, BE IT RESOLVED by the City Council of the City of Perris, as follows:

Section 1. Each of the above recitals is true and correct and is adopted by the Council and incorporated herein.

Section 2. The Council hereby determines to institute proceedings for the formation of a community facilities district under the terms of the Act. The exterior boundaries of the District are hereby specified and described to be as shown on that certain map now on file in the office of the City Clerk entitled “Proposed Boundaries of Community Facilities District No. 2022-2 (Perris Logistics Center) of the City of Perris,” which map indicates by a boundary line the extent of the territory included in the proposed District and shall govern for all details as to the extent of the District. On the original and one copy of the map of such District on file in the Clerk’s office, the Clerk shall endorse the certificate evidencing the date and adoption of this resolution. The Clerk shall file the original of such map in her office and, within fifteen (15) days after the adoption of this Resolution, the Clerk shall file a copy of such map so endorsed in the records of the County Recorder, County of Riverside, State of California.

Section 3. The name of the proposed District shall be “Community Facilities District No. 2022-2 (Perris Logistics Center) of the City of Perris”.

Section 4. The Facilities proposed to be financed by the District are public infrastructure facilities and other governmental facilities with an estimated useful life of five years or longer, which the City is authorized by law to construct, acquire, own, operate or contribute revenue to. The Council hereby finds and determines that the description of the Facilities herein is sufficiently informative to allow taxpayers within the proposed District to understand what the funds of the District may be used to finance. The Incidental Expenses expected to be incurred include the cost of planning and designing the Facilities, the costs of forming the District, issuing bonds and levying and collecting a special tax within the District. The Council hereby finds that the proposed Facilities are necessary to meet increased demands placed upon the City as a result of development occurring within the proposed District. Such Facilities need not be physically located within the District.

Section 5. Except where funds are otherwise available, it is the intention of the Council to levy annually in accordance with procedures contained in the Act a special tax within the District (the “Special Tax”) sufficient to pay for the costs of financing the acquisition and/or construction of the Facilities and Incidental Expenses, including the principal and interest and other periodic costs on bonds or other indebtedness proposed to be issued to finance the Facilities, and Incidental Expenses, the establishment and replenishment of reserve funds, the credit enhancement fees, the costs of administering the levy and collection of the Special Tax and all other costs of the levy of the Special Tax and issuance of the bonds, including any foreclosure proceedings, architectural, engineering, inspection, legal, fiscal, and financial consultant fees, discount fees, interest on bonds due and payable prior to the expiration of one year from the date of completion of Facilities (but not to exceed two years), election costs and all costs of issuance of the bonds, including, but not limited to, fees for bond counsel, disclosure counsel, financing consultants and printing costs, and all other administrative costs of the tax levy and bond issue. The Special Tax will be secured by recordation of a continuing lien against all non-exempt real property in the District. In the first year in which such a Special Tax is levied, the levy shall include a sum sufficient to repay to the City all amounts, if any, transferred to the District pursuant to Section 53314 of the Act and interest thereon. The schedule of the rate

and method of apportionment and manner of collection of the Special Tax within the District are described in detail in Exhibit “C” attached hereto and by this reference incorporated herein (“Rate and Method”). The Special Tax is based upon the cost of financing the Facilities and Incidental Expenses in the District, the demand that each parcel will place on the Facilities and the benefit (direct and/or indirect) received by each parcel from the Facilities.

The Special Tax within the proposed District is apportioned to each parcel within the proposed District on the foregoing basis pursuant to Section 53325.3 of the Act. In the event that a portion of the property within the proposed District shall become for any reason exempt, wholly or partially, from the levy of the Special Tax, the Council shall, on behalf of the District, increase the levy to the extent necessary upon the remaining property which is not delinquent or exempt in order to yield the required payments, subject to the maximum tax. The Special Tax shall be levied as long as necessary to meet the Special Tax Requirement (as defined in the Rate and Method) for a period not to exceed fifty (50) Fiscal Years commencing with Fiscal Year 2023-24, provided however that the Special Tax will cease to be levied in an earlier Fiscal Year if the CFD Administrator (as defined in the Rate and Method) has determined that all required interest and principal payments on CFD No. 2022-2 bonds have been paid

Section 6. The special tax within the proposed District is based on the expected demand that each parcel of real property within the proposed District will place on the Facilities and on the benefit that each parcel derives from the right to access the Facilities. The Council hereby determines that the proposed Facilities are necessary to meet the increased demand placed upon the City and the existing infrastructure in the City as a result of the development of land proposed for inclusion of the District. The Council hereby determines the Rate and Method for the District to be reasonable.

Section 7. A public hearing (the “Hearing”) on the establishment of Community Facilities District No. 2022-2, the proposed Rate and Method and the proposed issuance of bonds by the District to finance the Facilities and the Incidental Expenses shall be held on July 25, 2023, at 6:30 p.m., or as soon thereafter as practicable, at the chambers of the City Council of the City of Perris, 101 North “D” Street, Perris, California 92570. Should the Council determine to form the District, a special election will be held within the District to authorize the issuance of bonds and the levy of the Special Tax in accordance with the procedures contained in Government Code Section 53326. If held, the proposed voting procedure at the elections will be a landowner vote (to the extent there are no registered voters in the District) with each landowner who is the owner of record of land within the District at the close of the Hearing, or the authorized representative thereof, having one vote for each acre or portion thereof owned within the District. Ballots for the special election may be distributed by mail or by personal service.

Section 8. At the time and place set forth above for the Hearing, any interested person, including all persons owning lands or registered to vote within the proposed District, may appear and be heard.

Section 9. Each City officer who is or will be responsible for the Facilities to be financed by the District, if it is established, is hereby directed to study the proposed District and, at or before the time of the above-mentioned Hearing, file a report with the Council, and

which is to be made a part of the record of the Hearing, containing a brief description of the Facilities and services by type which will in his or her opinion be required to adequately meet the needs of the District and his or her estimate of the cost of providing the Facilities and services, including an estimate of the fair and reasonable cost of all Incidental Expenses, including the cost of planning and designing the Facilities to be financed pursuant to the Act, the cost of environmental evaluations of such Facilities, all costs associated with the creation of the District, issuance of bonds, determination of the amount of any special taxes, collection of any special taxes, or costs otherwise incurred in order to carry out the authorized purposes of the City with respect to the District, and any other expenses incidental to the construction, completion and inspection of the authorized work to be paid through the proposed financing.

Section 10. The City may accept advances of funds or work-in-kind from any sources, including private persons or private entities, and is authorized and directed to use such funds for any authorized purpose, including any cost incurred in creating the District. The District may enter into an agreement to repay all of such funds as are not expended or committed for any authorized purpose at the time of the election on the levy of the Special Tax, if the proposal to levy such tax should fail, and to repay all of such funds advanced if the levy of the Special Tax shall be approved by the qualified electors of the District.

Section 11. The Clerk is hereby directed to publish a notice (“Notice”) of the Hearing pursuant to Section 6061 of the Government Code in a newspaper of general circulation published in the area of the proposed District. Such Notice shall contain the text or a summary of this Resolution, state the time and place of the Hearing, a statement that the testimony of all interested persons or taxpayers will be heard, a description of the protest rights of the registered voters and landowners in the proposed District as provided in Section 53324 of the Act and a description of the proposed voting procedure for the election required by the Act. Such publication shall be completed at least seven (7) days prior to the date of the Hearing.

Section 12. The Clerk may send a copy of the Notice of the Hearing by first-class mail, postage prepaid, to each registered voter and to each landowner within the proposed District as shown on the last equalized assessment roll. Said mailing shall be completed not less than fifteen (15) days prior to the date of the Hearing.

Section 13. Pursuant to Section 53344.1 of the Act, the Council hereby reserves to itself, in its sole discretion, the right and authority by subsequent resolution to allow any owner of property within the District, subject to the provisions of Section 53344.1 of the Act and those conditions as it may impose, and any applicable prepayment penalties as prescribed in the bond indenture or comparable instrument or document, to tender to the District treasurer in full payment or part payment of any installment of the special taxes or the interest or penalties thereon which may be due or delinquent, but for which a bill has been received, any bond or other obligation secured thereby, the bond or other obligation to be taken at par and credit to be given for the accrued interest shown thereby computed to the date of tender.

Section 14. The voting procedure with respect to the establishment of the District and the imposition of the special tax shall be by hand delivered ballot election.

Section 15. This resolution of intention shall take effect upon its adoption.

ADOPTED, SIGNED and **APPROVED** this 30th day of May, 2023.

Michael M. Vargas, Mayor

ATTEST :

Nancy Salazar, City Clerk

STATE OF CALIFORNIA)
COUNTY OF RIVERSIDE) §
CITY OF PERRIS)

I, Nancy Salazar, CITY CLERK OF THE CITY OF PERRIS, DO HEREBY CERTIFY that the foregoing Resolution Number 6190 was duly adopted by the City Council of the City of Perris at a regular meeting of said Council on the 30th day of May, 2023, and that it was so adopted by the following vote:

AYES: ROGERS, NAVA, CORONA, RABB, VARGAS
NOES: NONE
ABSENT: NONE
ABSTAIN: NONE

By: _____
Nancy Salazar, City Clerk

EXHIBIT A

**COMMUNITY FACILITIES DISTRICT NO. 2022-2
(PERRIS LOGISTICS CENTER) BOUNDARY MAP**

[SEE ATTACHED]

EXHIBIT B

TYPES OF FACILITIES TO BE FINANCED BY COMMUNITY FACILITIES DISTRICT NO. 2022-2 (PERRIS LOGISTICS CENTER)

The General Description of the Facilities that may be acquired or constructed is as follows:

- Street facilities, including, but not limited to, major arterials, highways, bridge facilities, regional transportation facilities and streets, intersections, access ramps, roadways, sidewalk, curb, gutters, striping, lighting, traffic signalization, signage, landscaping of public streets and rights-of-way and appurtenant facilities;
- Storm control facilities, including, but not limited to, storm drains, channels, detention, headwalls, riprap pads, water quality basins, retention and/or catch basins and appurtenant facilities;
- Sewer improvements, sanitary sewers, including, but not limited to, lift stations, force mains, pump stations, transmission and main lines, valves, and appurtenant facilities;
- Domestic water facilities, including, but not limited to, reservoirs, pump stations, transmission lines, distribution facilities, main lines, valves, fire hydrants and appurtenant facilities;
- Park, recreational facilities, trails, open space and appurtenant facilities;
- Impact and other City or public agency fees, including but not limited to, Transportation Uniform Mitigation Fees, Development Impact Fees, school fees, water fees, drainage fees, sewer treatment and connection fees, water supply fees, water meter fees, water connection fees, storm drain fees, capital facilities' fees and other city or public agency fees and all capital facilities which are part of these fee programs and capital improvement programs;
- Incidental expenses;
- City facilities.

OTHER

The District may also finance any of the following:

1. Bond related expenses, including underwriters' discount, reserve fund, capitalized interest, financial advisor fees and expenses, bond and disclosure counsel, special tax consultant fees and expenses, dissemination agent fees and all other incidental expenses.
2. Administrative fees of the City and the Bond trustee or fiscal agent related to the District and the Bonds.

3. Reimbursement of costs related to the formation of the District advanced by the City or any related entity, or any landowner or developer within the District, as well as reimbursement of any costs advanced by the City or any related entity, or any landowner or developer within the District, for facilities or other purposes or costs of the District.

This description of the public capital facilities is general in nature. The final nature and location of improvements and facilities will be determined upon the preparation of final plans and specifications. The final plans and specifications may show substitutes in lieu of, or modifications to, proposed work. Any such substitution shall not be a change or modification in the proceedings as long as the facilities provide a service substantially similar to that as set forth in the city officer's report, containing a brief description of the facilities which will be required to adequately meet the needs of the District.

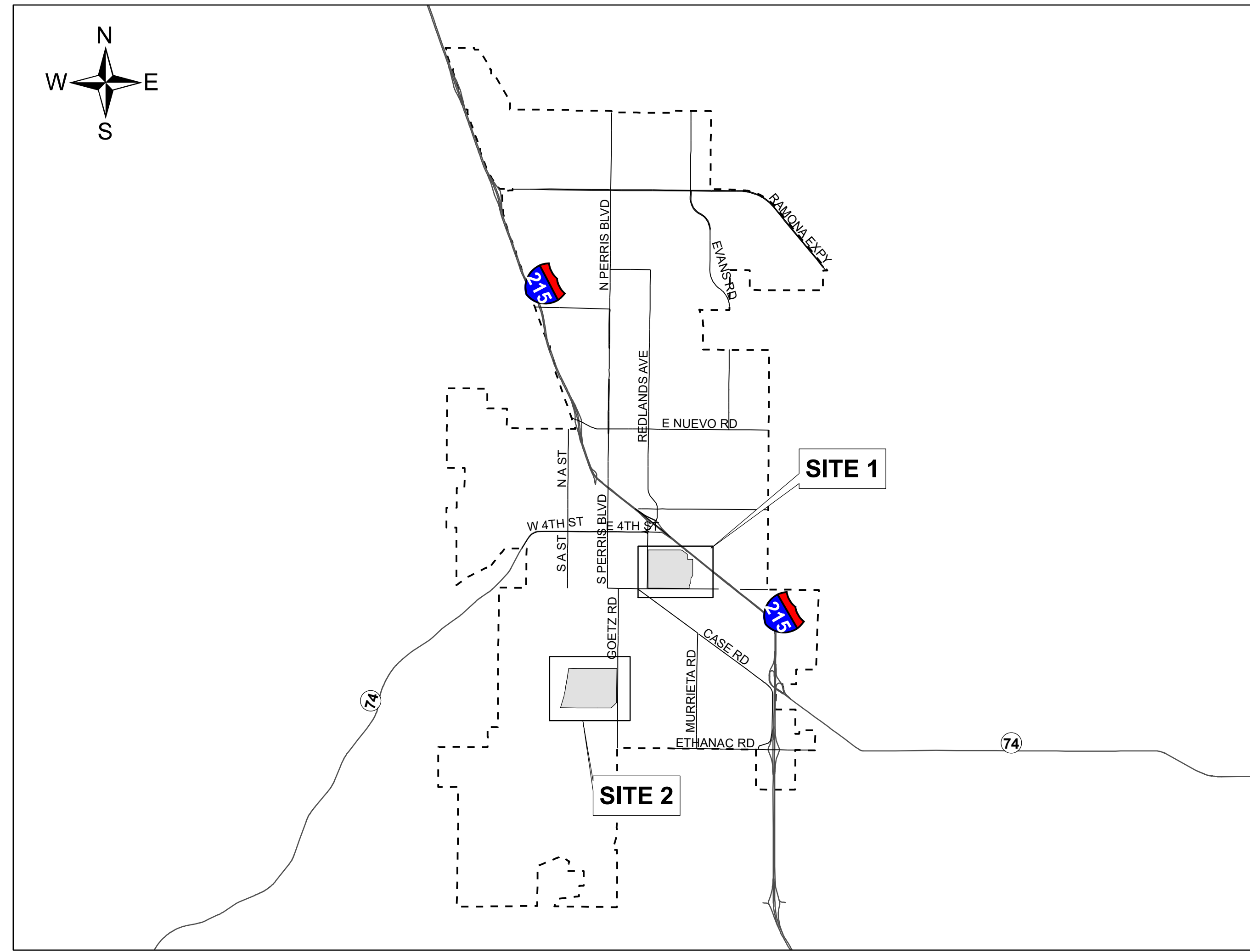
EXHIBIT C

**RATE AND METHOD OF APPORTIONMENT OF SPECIAL TAX
COMMUNITY FACILITIES DISTRICT NO. 2022-2 (PERRIS LOGISTICS CENTER)**

[SEE ATTACHED]

MAP OF PROPOSED BOUNDARIES OF COMMUNITY FACILITIES DISTRICT NO. 2022-2 (PERRIS LOGISTICS CENTER)

CITY OF PERRIS
COUNTY OF RIVERSIDE
STATE OF CALIFORNIA



FILED IN THE OFFICE OF THE CITY CLERK THIS _____ DAY OF _____, 20__.

I HEREBY CERTIFY THAT THE WITHIN MAP SHOWING PROPOSED BOUNDARIES OF COMMUNITY FACILITIES DISTRICT NO. 2022-2 (PERRIS LOGISTICS CENTER), CITY OF PERRIS, COUNTY OF RIVERSIDE, STATE OF CALIFORNIA, WAS APPROVED BY THE CITY COUNCIL OF THE CITY OF PERRIS AT A REGULAR MEETING THEREOF, HELD ON THE _____, DAY OF _____, 20__, BY ITS RESOLUTION NO. _____.

CITY CLERK
CITY OF PERRIS

FILED THIS _____ DAY OF _____, 20__, AT THE HOUR OF _____ O'CLOCK ____ M. IN BOOK _____ OF MAPS OF ASSESSMENT AND COMMUNITY FACILITIES DISTRICTS AT PAGE(S) _____, IN THE OFFICE OF THE COUNTY RECORDER, COUNTY OF RIVERSIDE, STATE OF CALIFORNIA.

PETER ALDANA, ASSESSOR-COUNTY CLERK-RECORDER

BY DEPUTY
COUNTY RECORDER
COUNTY OF RIVERSIDE
STATE OF CALIFORNIA

THE LINES AND DIMENSIONS OF EACH LOT OR PARCEL SHOWN ON THIS DIAGRAM SHALL BE THOSE LINES AND DIMENSIONS AS SHOWN ON THE RIVERSIDE COUNTY ASSESSOR'S MAPS FOR THOSE PARCELS LISTED.

THE RIVERSIDE COUNTY ASSESSOR'S MAPS SHALL GOVERN FOR ALL DETAILS CONCERNING THE LINES AND DIMENSIONS OF SUCH LOTS OR PARCELS.

Legend

----- City of Perris Boundary

WILLDAN
Financial Services

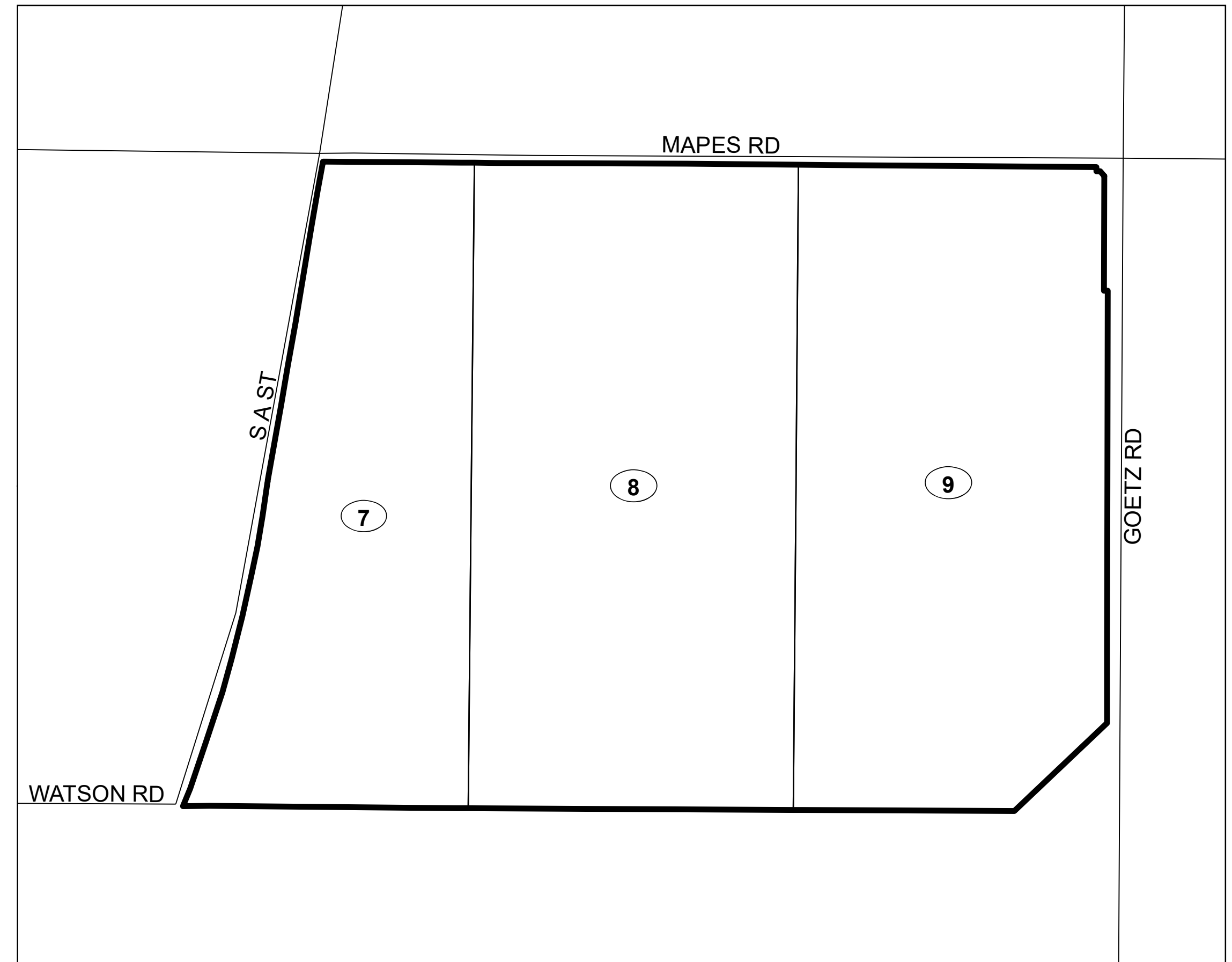
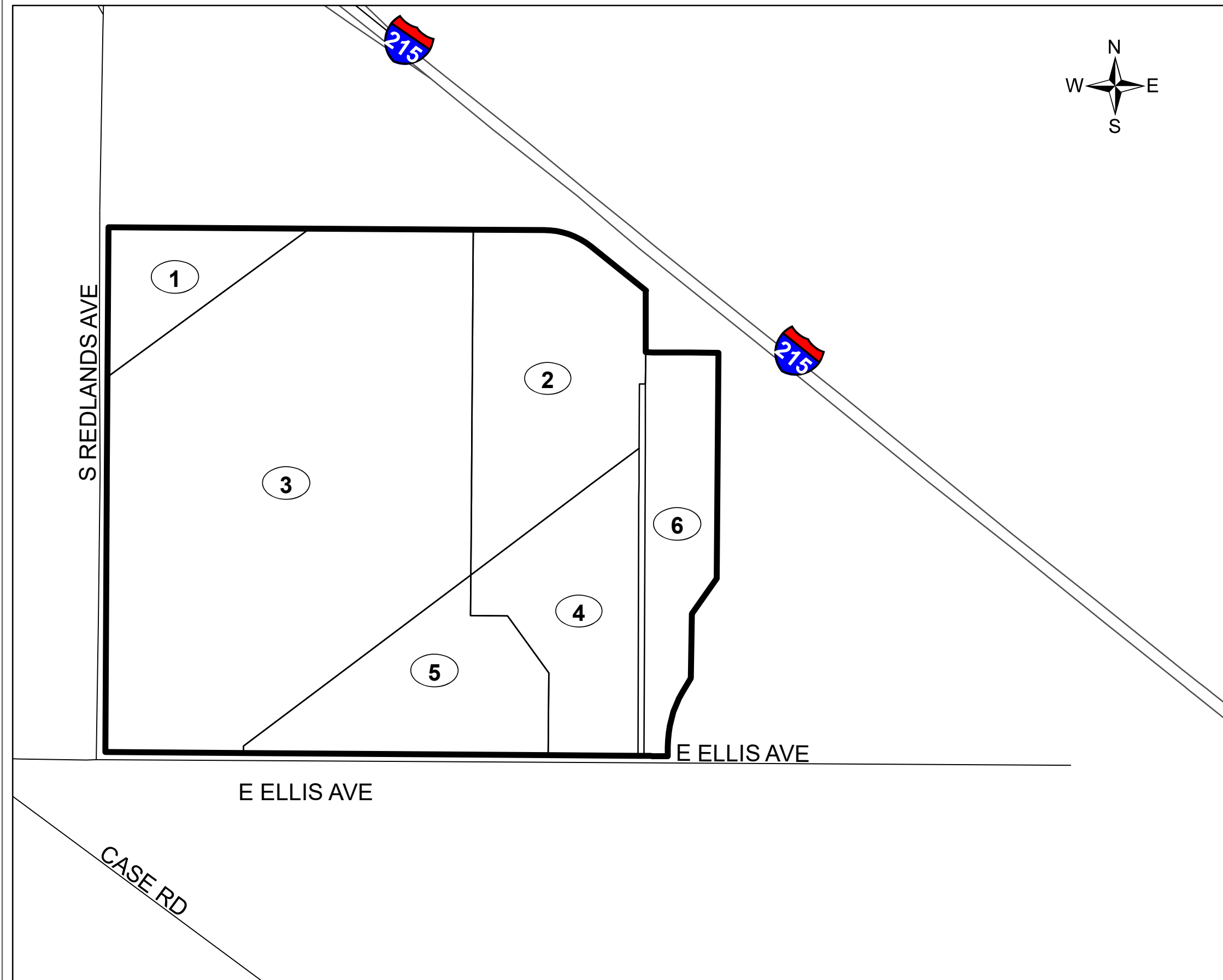
27368 VIA INDUSTRIA, SUITE #200
TEMECULA, CA 92590
(951) 587-3500

MAP OF PROPOSED BOUNDARIES OF COMMUNITY FACILITIES DISTRICT NO. 2022-2 (PERRIS LOGISTICS CENTER)

CITY OF PERRIS
COUNTY OF RIVERSIDE
STATE OF CALIFORNIA

SITE 1

SITE 2



MAP REFERENCE NUMBER	ASSESSOR'S PARCEL NUMBER(S)
1	310-170-006
2	310-170-009
3	310-170-010
4	310-170-011
5	310-170-012
6	310-220-057
7	330-120-002
8	330-120-003
9	330-120-015

RATE AND METHOD OF APPORTIONMENT OF SPECIAL TAX

COMMUNITY FACILITIES DISTRICT NO. 2022-2 (PERRIS LOGISTICS CENTER)

A Special Tax shall be levied on all Taxable Property within the boundaries of Community Facilities District No. 2022-2 (Perris Logistics Center) of the City of Perris (“CFD No. 2022-2”) and collected each Fiscal Year commencing in Fiscal Year 2023-24, in an amount determined by the CFD Administrator through the application of the procedures described below. All of the real property within CFD No. 2022-2, unless exempted by law or by the provisions hereof, shall be taxed for the purposes, to the extent, and in the manner herein provided.

1. DEFINITIONS

The terms hereinafter set forth have the following meanings:

“**Acre**” or “**Acreage**” means the land area of an Assessor’s Parcel as shown on an Assessor’s Parcel Map, or if the land area is not shown on an Assessor’s Parcel Map, the land area shown on the applicable Final Map. An Acre means 43,560 square feet of land.

“**Act**” means the Mello-Roos Community Facilities Act of 1982, as amended, being Chapter 2.5 of Part 1 of Division 2 of Title 5 of the Government Code of the State of California.

“**Acquisition Agreement**” means this Acquisition and Funding Agreement, dated _____, 2023, by and among the City, the Developer, and the IDI Property Owners, as originally executed or as the same may be amended from time to time in accordance with its terms

“**Administrative Expenses**” means the following actual or reasonably estimated costs related to the administration of CFD No. 2022-2 including, but not limited to: the costs of preparing and computing the Annual Special Tax (whether by the City or designee thereof or both); the costs of collecting the Special Taxes (whether by the City, the County or otherwise); the costs of remitting the Special Taxes to the Trustee; the costs of the Trustee (including its legal counsel) in the discharge of the duties required of it under the Indenture; the costs to the City, CFD No. 2022-2, or any designee thereof complying with arbitrage rebate requirements, including without limitation rebate liability costs and periodic rebate calculations; the costs to the City, CFD No. 2022-2, or any designee thereof complying with disclosure or reporting requirements of the City or CFD No. 2022-2, associated with applicable federal and State laws; the costs associated with preparing Special Tax disclosure statements and responding to public inquiries regarding the Special Taxes; the costs to the City, CFD No. 2022-2, or any designee thereof related to an appeal of the Special Tax; and the City’s annual administration fees and third party expenses. Administrative Expenses shall also include amounts estimated or advanced by the City or CFD No. 2022-2 for any other administrative purposes of CFD No. 2022-2, including attorney’s fees and other costs related to commencing and pursuing any foreclosure of delinquent Special Taxes.

“**Annual Special Tax**” means the Special Tax actually levied in any Fiscal Year on any Assessor’s Parcel.

“**Assessor**” means the Assessor of the County of Riverside.

“**Assessor’s Parcel**” means a lot or parcel shown on an Assessor’s Parcel Map with an assigned Assessor’s Parcel Number.

“**Assessor’s Parcel Map**” means an official map of the Assessor designating parcels by Assessor’s Parcel Number.

“**Assessor’s Parcel Number**” means the number assigned to an Assessor’s Parcel by the County for purposes of identification.

“**Authorized Fees**” means development, impact or other fees imposed by the City as shown on Exhibit C to the Acquisition Agreement.

“**Boundary Map**” means the map of the boundaries of CFD No. 2022-2 recorded on in the Riverside County Recorder’s Office in Book ___, Page ___, of Maps of Assessments and Community Facilities Districts (instrument number ___ - ___).

“**Bonds**” means any bonds or other Debt of CFD No. 2022-2, whether in one or more series, secured by the levy of Special Taxes.

“**Calendar Year**” means the period commencing January 1 of any year and ending the following December 31.

“**CFD Administrator**” means an authorized representative of the City, or designee thereof, responsible for determining the Special Tax Requirement and for preparing the Annual Special Tax roll.

“**CFD No. 2022-2**” means the Community Facilities District No. 2022-2 (Perris Logistics Center) of the City of Perris.

“**City**” means the City of Perris, California.

“**Council**” means the City Council of the City acting as the legislative body of CFD No. 2022-2 under the Act.

“**County**” means the County of Riverside, California.

“**Debt**” means any binding obligation to pay or repay a sum of money, including obligations in the form of bonds, certificates of participation, long-term leases, loans from government agencies, or loans from banks, other financial institutions, private businesses, or individuals, or long-term contracts.

“**Debt Service**” means for each Fiscal Year, the total amount of principal and interest payable on any Outstanding Bonds during the Calendar Year commencing on January 1 of such Fiscal Year.

“**Developer**” means IDI Logistics, LLC, a Delaware limited liability company, and its successors and assigns.

“**Exempt Property**” means for each Fiscal Year, all Assessor’s Parcels designated as being exempt from Special Taxes pursuant to Section 8 below.

“**Facilities**” means the facilities described in Exhibit B to the Acquisition Agreement.

“**Final Map**” means a subdivision of property by recordation of a final map, parcel map, or lot line adjustment, pursuant to the Subdivision Map Act (California Government Code Section 66410 et seq.) or recordation of a condominium plan pursuant to California Civil Code 4285 that creates individual lots for which Building Permits may be issued without further subdivision.

“**Fiscal Year**” means the period starting on July 1 and ending the following June 30.

“**Indenture**” means the indenture, fiscal agent agreement, resolution or other instrument pursuant to which Bonds are issued, as modified, amended and/or supplemented from time to time, and any instrument replacing or supplementing the same.

“**IDI Property Owners**” means IDIL Perris North 3, L.P., a Delaware limited partnership, and IDIL Perris Fulfillment Center L.P., a Delaware limited partnership, and/or an affiliated company thereof, and their respective successor and/or assigns.

“**Lower Income Households Welfare Exemption Property**” means, for each Fiscal Year, an Assessor’s Parcel that is entitled to a welfare exemption under subdivision (g) of Section 214 of the California Revenue and Taxation Code (or any successor statute), as indicated in the County Assessor’s roll finalized as of January 1 of the previous Fiscal Year; provided that such property shall not be classified as Lower Income Households Welfare Exemption Property if debt is outstanding and the property was subject to the Special Tax prior to receiving the exemption, in which case the property shall remain subject to the Special Tax and the Special Tax shall be enforceable against the property.

“**Maximum Special Tax**” means for each Assessor’s Parcel, the maximum Special Tax, determined in accordance with Sections 3.A and 3.B below, which may be levied in a given Fiscal Year on such Assessor’s Parcel of Taxable Property.

“**Outstanding Bonds**” means all Bonds, which are deemed to be outstanding under the Indenture.

“**Prepayment Amount**” means the amount required to prepay the Annual Special Tax obligation in full for an Assessor’s Parcel as described in Section 6.A below.

“**Proportionately**” or “**Proportionate**” means for Taxable Property, that the ratio of the actual Special Tax levy to the applicable Maximum Special Tax Special Tax is equal for all Assessor’s Parcels of Taxable Property.

“**Provisional Property**” means all Assessor’s Parcels of Public Property, or property that would otherwise be classified as Exempt Property pursuant to the provisions of Section 8, but cannot be

classified as Exempt Property because to do so would reduce the Acreage of all Taxable Property below the required minimum Acreage as set forth in Section 8.

“**Public Property**” means any property within the boundaries of CFD No. 2022-2, which is owned by, or irrevocably offered for dedication to the federal government, the State of California, the County, the City or any other public agency; provided however that any property owned by a public agency and leased to a private entity and subject to taxation under Section 53340.1 of the Act shall be taxed and classified in accordance with its use.

“**Special Tax**” means any special tax levied within CFD No. 2022-2 pursuant to the Act and this Rate and Method of Apportionment of Special Tax.

“**Special Tax Obligation**” means the total obligation of an Assessor’s Parcel of Taxable Property to pay the Special Tax for the remaining life of CFD No. 2022-2.

“**Special Tax Requirement**” means that amount required in any Fiscal Year to: (i) pay regularly scheduled Debt Service on all Outstanding Bonds; (ii) pay periodic costs on the Outstanding Bonds, including but not limited to, credit enhancement and rebate payments on the Outstanding Bonds; (iii) pay Administrative Fees and Expenses; (iv) pay any amounts required to establish or replenish any reserve funds for all Outstanding Bonds; (v) accumulate funds for deposit in the Improvement Fund to pay directly or reimburse Developer for acquisition or construction of Facilities or Authorized Fees; and (vi) pay for reasonably anticipated delinquent Special Taxes based on the delinquency rate for Special Taxes levied in the previous Fiscal Year; less (vii) a credit for funds available to reduce the Annual Special Tax levy, as determined by the CFD Administrator pursuant to the Indenture.

“**State**” means the State of California.

“**Taxable Property**” means all of the Assessor’s Parcels within the boundaries of CFD No. 2022-2, which are not exempt from the levy of the Special Tax pursuant to law or Section 8 below.

“**Trustee**” means the trustee or fiscal agent under the Indenture.

2. LAND USE CLASSIFICATION

Each Fiscal Year, beginning with Fiscal Year 2023-24, each Assessor’s Parcel within CFD No. 2022-2 shall be classified as Taxable Property, Exempt Property or Provisional Property and all such Taxable Property shall be subject to the levy of Special Taxes in accordance with this Rate and Method of Apportionment of Special Tax determined pursuant to Sections 3 and 4 below.

3. SPECIAL TAX RATES

A. Maximum Special Tax for Taxable Property

The Maximum Special Tax applicable to an Assessor's Parcel classified as Taxable Property commencing in Fiscal Year 2023-24 shall be determined pursuant to Table 1 below.

Table 1
Maximum Special Tax Rates

Land Use Type	Maximum Special Tax per Acre
Taxable Property	\$4,400

Each July 1, commencing July 1, 2024, the Maximum Special Tax rates for Taxable Property shall be increased by two percent (2%) of the amount in effect the prior Fiscal Year.

B. Maximum Special Tax for Provisional Property

The Maximum Special Tax for Provisional Property commencing in Fiscal Year 2023-24 shall be \$4,400 per Acre for property. Each July 1, commencing July 1, 2024, the Maximum Special Tax rates for Provisional Property shall be increased by two percent (2%) of the amount in effect the prior Fiscal Year.

4. METHOD OF APPORTIONMENT

For each Fiscal Year, commencing Fiscal Year 2023-24, the CFD Administrator shall levy the Special Tax on all Taxable Property in accordance with the following steps:

Step 1: The Special Tax shall be levied Proportionately on each Assessor's Parcel of Taxable Property in an amount up to 100% of the applicable Maximum Special Tax as necessary to satisfy the Special Tax Requirement;

Step 2: If additional monies are needed to satisfy the Special Tax Requirement after the first step has been completed, then the Special Tax shall be levied Proportionately on each Assessor's Parcel of Provisional Property.

5. COLLECTION OF SPECIAL TAXES

Collection of the Annual Special Tax shall be made by the County in the same manner as ordinary ad valorem property taxes are collected and the Annual Special Tax shall be subject to the same penalties and the same lien priority in the case of delinquency as ad valorem taxes; provided, however, that the Council may provide for (i) other means of collecting the Special Tax, including direct billings thereof to the property owners; and (ii) judicial foreclosure of delinquent Annual Special Taxes.

6. PREPAYMENT OF SPECIAL TAX OBLIGATION

A. Prepayment in Full

Property owners may prepay and permanently satisfy the Special Tax Obligation by a cash settlement with the City as permitted under Government Code Section 53344. The following definitions apply to this Section 6:

“CFD Public Facilities Costs” means \$21,000,000 or such number that (i) shall be determined by the CFD Administrator as sufficient to acquire or construct the facilities to be financed under the Act and financing program for CFD No. 2022-2, or (ii) shall be determined by the Council concurrently with a covenant that it will not issue any more Bonds (except refunding bonds).

“Future Facilities Costs” means the CFD Public Facilities Costs minus (i) costs previously paid from the Improvement Fund to acquire or construct the facilities, (ii) monies currently on deposit in the Improvement Fund, and (iii) monies currently on deposit in an escrow or other designated fund that are expected to be available to finance CFD Public Facilities Costs.

“Improvement Fund” means the fund (regardless of its name) established pursuant to the Indenture (and referenced in the Acquisition Agreement) or a separate account maintained by the City to hold funds, which are currently available for expenditure to acquire or construct the Facilities or pay Authorized Fees to be funded by CFD No. 2022-2.

“Outstanding Bonds” means all Previously Issued Bonds, which remain outstanding as of the first interest and/or principal payment date following the current Fiscal Year excluding Bonds to be redeemed at a later date with proceeds of prior Special Tax prepayments.

“Previously Issued Bonds” means all Bonds that have been issued prior to the date of prepayment.

The Special Tax Obligation applicable to an Assessor’s Parcel of Taxable Property may be prepaid and the obligation to pay the Special Tax for such Assessor’s Parcel permanently satisfied as described herein, provided that a prepayment may be made with respect to a particular Assessor’s Parcel only if there are no delinquent Special Taxes with respect to such Assessor’s Parcel at the time of prepayment or the delinquent special taxes are paid off concurrently with the prepayment to the satisfaction of the CFD Administrator. An owner of an Assessor’s Parcel eligible to prepay the Special Tax Obligation shall provide the CFD Administrator with written notice of intent to prepay, and designate or identify the company or agency that will be acting as the escrow agent, if any. The CFD Administrator shall provide the owner with a statement of the Prepayment Amount for such Assessor’s Parcel within thirty (30) days of the request, and may charge a reasonable fee for providing this service. Prepayment must be made at least 60 days prior to any redemption date provided for in the Indenture with respect to CFD No. 2022-2 Bonds to be redeemed with the proceeds of such prepaid Special Taxes, unless a shorter period is acceptable to the Trustee and the City.

The Prepayment Amount (defined below) shall be calculated for each applicable Assessor's Parcel or group of Assessor's Parcels as summarized below (capitalized terms as defined below):

Bond Redemption Amount
plus Redemption Premium
plus Future Facilities Prepayment Amount
plus Defeasance Amount
plus Prepayment Administrative Fees and Expenses
less Reserve Fund Credit
less Capitalized Interest Credit
Total: equals Prepayment Amount

As of the proposed date of prepayment, the Prepayment Amount (defined in Step 14 below) shall be calculated as follows:

Step No.:

1. Confirm that no Special Tax delinquencies apply to such Assessor's Parcel.
2. For Assessor's Parcels of Taxable Property, determine the Maximum Special Tax.
3. Divide the Maximum Special Tax computed pursuant to paragraph 2 by the total expected Maximum Special Tax revenue for CFD No. 2022-2, excluding any Assessor's Parcels for which the Special Tax Obligation has been previously prepaid.
4. Multiply the quotient computed pursuant to paragraph 3 by the Outstanding Bonds to compute the amount of Outstanding Bonds to be retired and prepaid for all applicable parcels and round that amount up to the nearest \$5,000 increment (the "**Bond Redemption Amount**").
5. Multiply the Bond Redemption Amount computed pursuant to paragraph 4 by the applicable redemption premium (expressed as a percentage), if any, on the Outstanding Bonds to be redeemed at the first available call date (the "**Redemption Premium**").
6. Compute the Future Facilities Costs.
7. Multiply the quotient computed pursuant to paragraph 3 by the amount determined pursuant to paragraph 6 to compute the amount of Future Facilities Costs to be prepaid (the "**Future Facilities Prepayment Amount**").
8. Compute the amount needed to pay interest on the Bond Redemption Amount from the first bond interest and/or principal payment date following the current Fiscal Year until the expected redemption date for the Outstanding Bonds which, depending on the Indenture, may be as early as the next interest payment date, but

the redemption date may be any date determined by the CFD Administrator as convenient and appropriate, provided such date is permitted by the Indenture.

9. Compute the amount the CFD Administrator reasonably expects to derive from the reinvestment of the Prepayment Amount less the Future Facilities Prepayment Amount and the Prepayment Administrative Fees from the date of prepayment until the redemption date for the Outstanding Bonds to be redeemed with the prepayment.

10. Subtract the amount computed in paragraph 9 from the amount computed in paragraph 8 (the “**Defeasance Amount**”).

11. Calculate the administrative fees and expenses of CFD No. 2022-2, including the costs of computation of the prepayment, the costs to invest the prepayment proceeds, the costs of redeeming CFD No. 2022-2, and the costs of recording any notices to evidence the prepayment and the redemption (the “**Prepayment Administrative Fees**”).

12. If reserve funds for the Outstanding Bonds, if any, are at or above 100% of the reserve requirement (as defined in the Indenture) on the prepayment calculation date, a reserve fund credit shall be calculated as a reduction in the applicable reserve fund for the Outstanding Bonds to be redeemed pursuant to the prepayment (the “**Reserve Fund Credit**”). No Reserve Fund Credit shall be granted if, after the Prepayment Amount is calculated, reserve funds are below 100% of the reserve requirement.

13. If any capitalized interest for the Outstanding Bonds will not have been expended at the time of the first interest and/or principal payment following the current Fiscal Year, a capitalized interest credit shall be calculated by multiplying the quotient computed pursuant to paragraph 3 by the expected balance in the capitalized interest fund after such first interest and/or principal payment (the “**Capitalized Interest Credit**”).

14. The amount to prepay the Special Tax Obligation is equal to the sum of the amounts computed pursuant to paragraphs 4, 5, 7, 10, and 11, less the amounts computed pursuant to paragraphs 12 and 13 (the “**Prepayment Amount**”).

15. From the Prepayment Amount, the sum of the amounts computed pursuant to paragraphs 4, 5, and 10, less the amounts computed pursuant to paragraphs 12 and 13 shall be deposited into the appropriate fund as established under the Indenture and be used to retire Outstanding Bonds or make Debt Service payments. The amount computed pursuant to paragraph 7 shall be deposited into the Improvement Fund. The amount computed pursuant to paragraph 11 shall be retained by CFD No. 2022-2.

The Prepayment Amount may be sufficient to redeem an amount other than a \$5,000 increment of CFD No. 2022-2 Bonds. In such cases, the increment above \$5,000 or integral multiple thereof will be retained in the appropriate fund

established under the Indenture to redeem CFD No. 2022-2 Bonds to be used with the next prepayment of CFD No. 2022-2 Bonds.

The CFD Administrator will confirm that all previously levied Special Taxes have been paid in full. With respect to any Assessor’s Parcel for which the Special Tax Obligation is prepaid in full, once the CFD Administrator has confirmed that all previously levied Special Taxes have been paid, the Council shall cause a suitable notice to be recorded in compliance with the Act, to indicate the prepayment of the Special Tax and the release of the Special Tax lien on such Assessor’s Parcel, and the obligation of the owner of such Assessor’s Parcel to pay the Special Tax shall cease.

Notwithstanding the foregoing, no Special Tax prepayment shall be allowed unless the aggregate amount of Maximum Special Taxes less Administrative Expenses that may be levied on Taxable Property, respectively, after the proposed prepayment is at least 1.1 times the Debt Service on all Outstanding Bonds in each Fiscal Year.

B. Partial Prepayment

The Special Tax on an Assessor’s Parcel of Taxable Property may be partially prepaid. The amount of the prepayment shall be calculated as in Section 6.A.; except that a partial prepayment shall be calculated according to the following formula:

$$PP = (PE-A) \times F + A$$

These terms have the following meaning:

- PP = the partial prepayment
- PE = the Prepayment Amount calculated according to Section 6.A
- F = the percentage by which the owner of the Assessor’s Parcel(s) is partially prepaying the Special Tax Obligation
- A = the Prepayment Administrative Fees and Expenses from Section 6.A

The owner of any Assessor’s Parcel who desires such partial prepayment shall notify the CFD Administrator of (i) such owner’s intent to partially prepay the Special Tax Obligation, (ii) the percentage by which the Special Tax Obligation shall be prepaid, and (iii) the company or agency that will be acting as the escrow agent, if any. The CFD Administrator shall provide the owner with a statement of the amount required for the partial prepayment of the Special Tax Obligation for an Assessor’s Parcel within sixty (60) days of the request and may charge a reasonable fee for providing this service.

With respect to any Assessor’s Parcel that is partially prepaid, the City shall (i) distribute the funds remitted to it according to Section 6.A., and (ii) indicate in the records of CFD No. 2022-2 that there has been a partial prepayment of the Special Tax Obligation and that a portion of the Special Tax with respect to such Assessor’s Parcel, equal to the outstanding percentage (1.00 - F) of the Maximum Special Tax, shall continue to be levied on such Assessor’s Parcel.

Notwithstanding the foregoing, no partial prepayment shall be allowed unless the aggregate amount of Maximum Special Taxes less Administrative Expenses that may be levied on Taxable Property, respectively, after the proposed partial prepayment is at least 1.1 times the Debt Service on all Outstanding Bonds in each Fiscal Year.

7. TERM OF SPECIAL TAX

The Special Tax shall be levied as long as necessary to meet the Special Tax Requirement for a period not to exceed fifty (50) Fiscal Years commencing with Fiscal Year 2023-24, provided however that the Special Tax will cease to be levied in an earlier Fiscal Year if the CFD Administrator has determined that all required interest and principal payments on CFD No. 2022-2 Bonds have been paid and the City has not instructed the CFD Administrator to continue levying.

8. EXEMPTIONS

The CFD Administrator shall classify as Exempt Property (i) Assessor's Parcels of Public Property, or (ii) Assessor's Parcels which are used as places of worship and are exempt from ad valorem property taxes because they are owned by a religious organization, (iv) Assessor's Parcels with public or utility easements making impractical their utilization for other than the purposes set forth in the easement, and (v) Lower Income Households Welfare Exemption Property, provided that no such classification would reduce the sum of all Taxable Property in CFD No. 2022-2 to less than 327.658 Acres. Assessor's Parcels which cannot be classified as Exempt Property because such classification would reduce the sum of all Taxable Property in CFD No. 2022-2 to less than 327.658 Acres shall be classified as Provisional Property and will continue to be subject to the CFD No. 2022-2 Special Taxes accordingly. Tax exempt status for the purpose of this paragraph will be assigned by the CFD Administrator in the chronological order in which property becomes eligible for classification as Exempt Property.

If the use of an Assessor's Parcel of Exempt Property changes so that such Assessor's Parcel is no longer classified as one of the uses set forth in the first paragraph of Section 8 above that would make such Assessor's Parcel eligible to be classified as Exempt Property, such Assessor's Parcel shall cease to be classified as Exempt Property and shall be deemed to be Taxable Property.

Notwithstanding the above, the CFD Administrator will interpret any ambiguities in the provisions of this RMA to facilitate the levy of \$1,441,695.20 on the Taxable Property within CFD No. 2022-2 for Fiscal Year 2023-24.

9. APPEALS

Any landowner who pays the Special Tax and claims the amount of the Special Tax levied on his or her Assessor's Parcel is in error shall first consult with the CFD Administrator regarding such error not later than twelve (12) months after first having paid the first installment of the Special Tax that is disputed. If following such consultation the CFD Administrator determines that an error has occurred, then the CFD Administrator shall take any of the following actions, in order of priority, in order to correct the error:

(i) Amend the Special Tax levy on the landowner's Assessor's Parcel(s) for the current Fiscal Year prior to the payment date,

(ii) Require the CFD to reimburse the landowner for the amount of the overpayment to the extent of available CFD funds, or

(iii) Grant a credit against, eliminate or reduce the future Special Taxes on the landowner's Assessor's Parcel(s) in the amount of the overpayment.

If following such consultation and action by the CFD Administrator the landowner believes such error still exists, such person may file a written notice of appeal with the City Council. Upon the receipt of such notice, the City Council or designee may establish such procedures as deemed necessary to undertake the review of any such appeal. If the City Council or designee determines an error still exists, the CFD Administrator shall take any of the actions described as (i), (ii) and (iii) above, in order of priority, in order to correct the error.

The City Council or designee thereof shall interpret this Rate and Method of Apportionment of Special Tax for purposes of clarifying any ambiguities and make determinations relative to the administration of the Special Tax and any landowner appeals. The decision of the City Council or designee shall be final.