



**DISTRIBUTION PARK**  
Perris, California

**AERIAL RENDER**  
July 03, 2024



**SMSARCHITECTS**





**DISTRIBUTION PARK**  
Perris, California

**AERIAL RENDER**  
July 03, 2024



**SMSARCHITECTS**

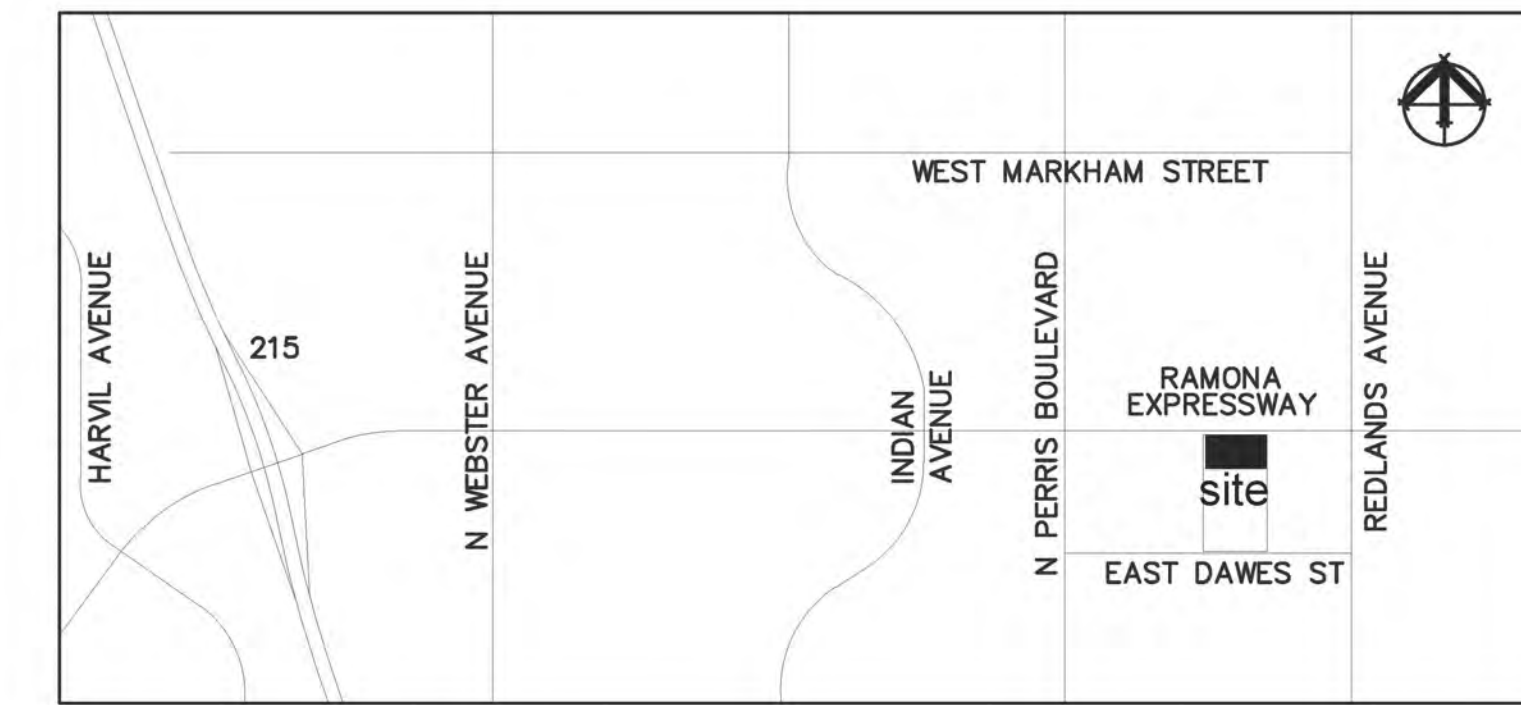






# RAMONA EXPRESSWAY

## Vicinity Map



## Project Summary

Site Area \_\_\_\_\_  
 Zone - Commercial \_\_\_\_\_ 4.58 Acres

Perris Valley Commerce Center Specific Plan  
 Planning Area 3  
 Flight Corridor Buffer - Zone D

## Building Summary

Building 1	4,000 sf
Building 2	5,000 sf
Building 3	52,008 sf
<b>Total</b>	<b>61,008 sf</b>

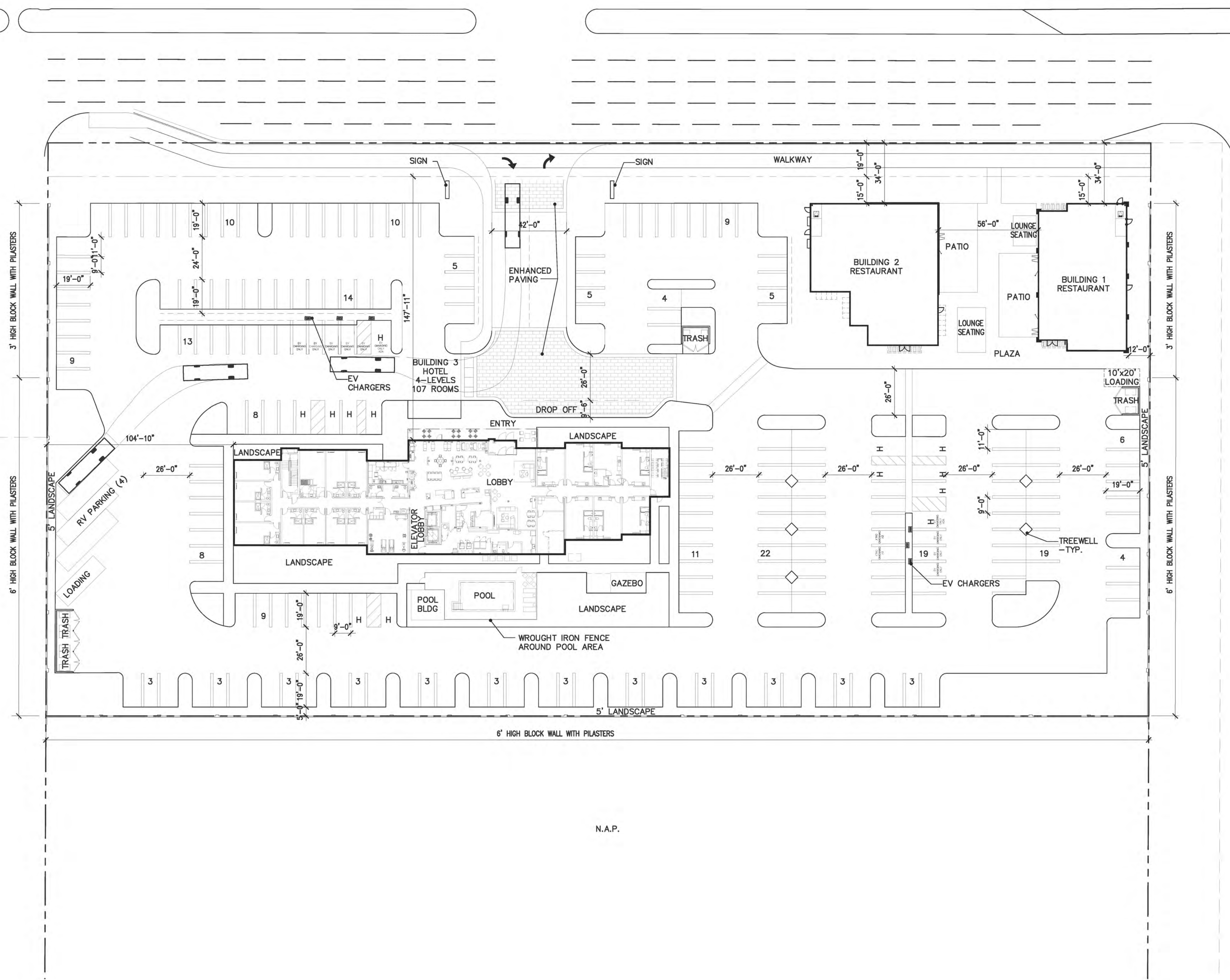
## Parking Summary

Requirements:

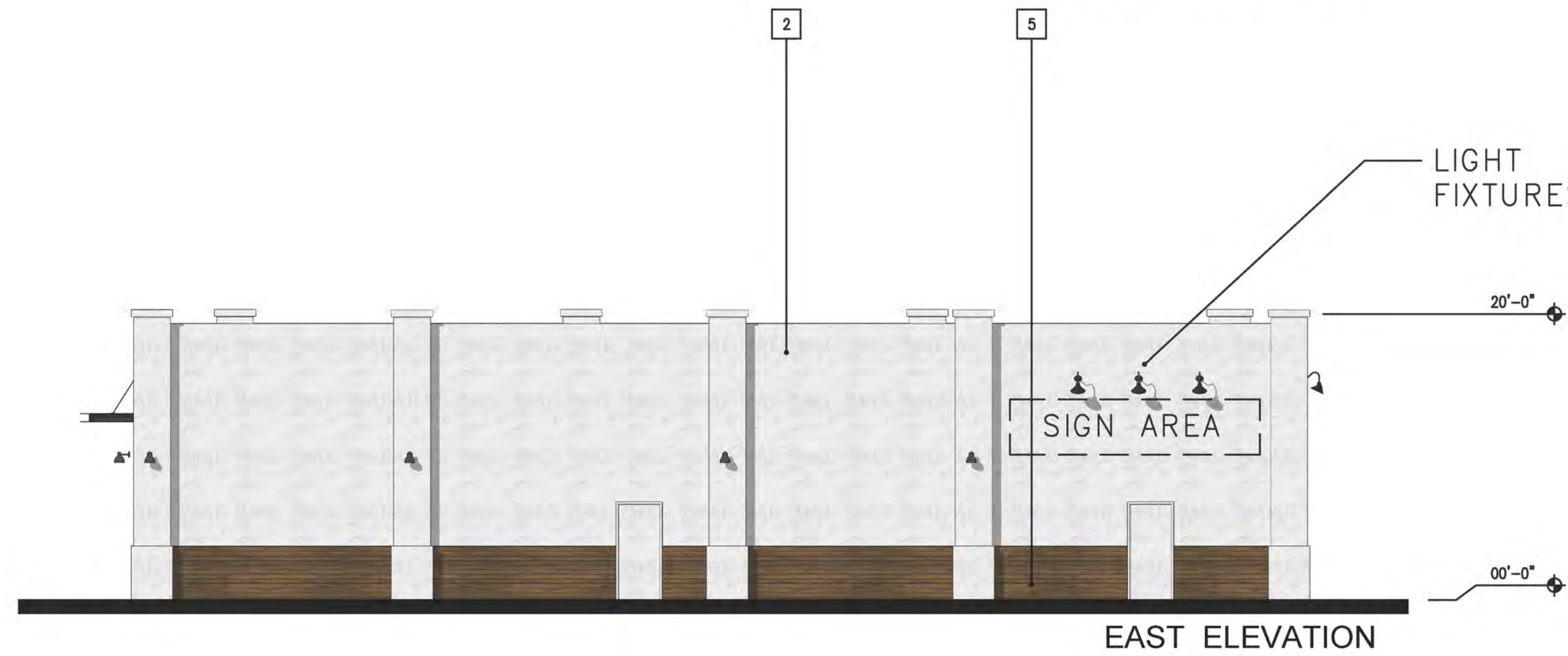
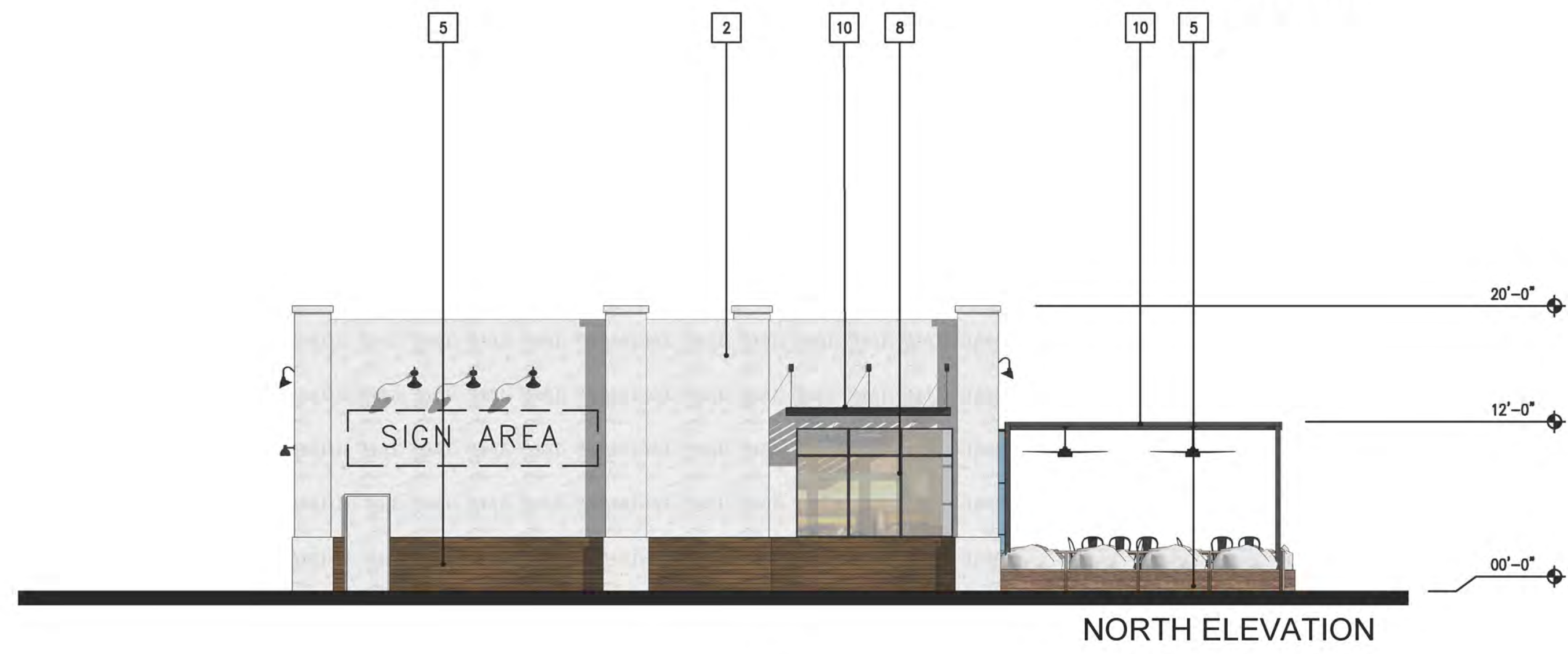
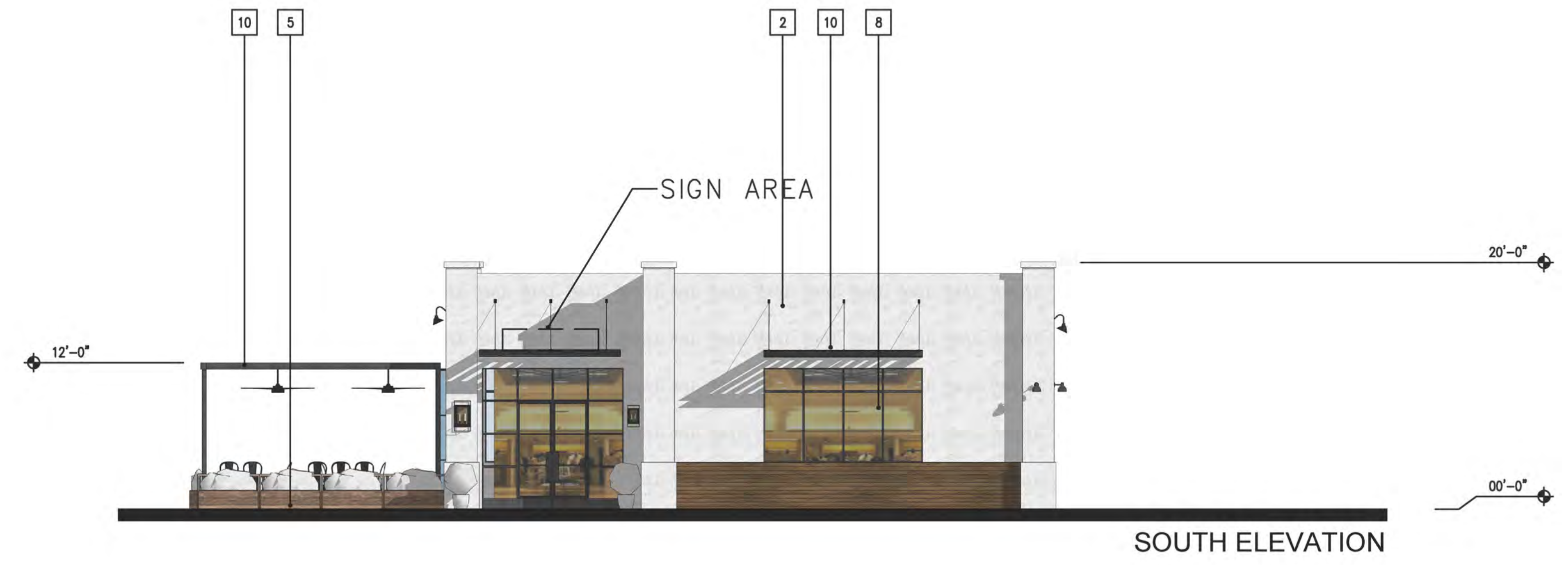
Restaurant	1 space per 50 SF of dining area	
Hotel	1.1 space per guest room	
Building 1 (restaurant / 2,400 SF indoor dining)		48 spaces
Building 2 (restaurant / 3,000 SF indoor dining)		60 spaces
Hotel (107 rooms, 4-levels)		117 spaces
Required		225 spaces required
Provided		226 spaces provided

**Owner**  
 Alabbasi Construction & Engineering  
 784 Ramona Expressway, Suite C  
 Perris, CA 92751

**Architect**  
 SMS Architects  
 100 Progress, Suite 250  
 Irvine, CA 92618







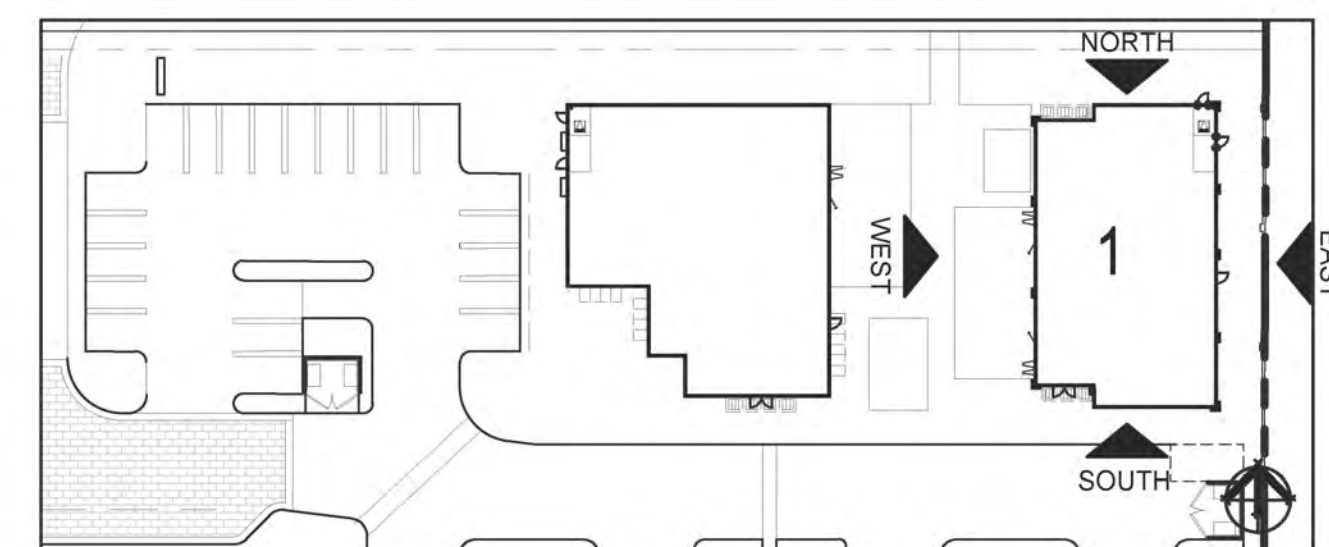
COLORS AND MATERIALS		
1	Metal Roof	Western States Metal, Charcoal Gray
2	Paint	Sherwin Williams, sw 7006 Extra White
3	Paint	Sherwin Williams, sw 7640 Fawn Brindle
4	Paint	Sherwin Williams, sw 7974 Peppercorn
5	Wood	Wood, Natural Stain
6	Stone Veneer	Eldorado Stone, Ledgecut33 - Whitecap
7	Stone Veneer	Eldorado Stone, River Rock Rio Grande
8	Storefront	Anodized Aluminum, Dark Bronze
9	Metal Awning	to match Sherwin Williams, sw6197 Aloof Gray
10	Metal Awning	to match Sherwin Williams, sw7974 Peppercorn

**Wall Signs**

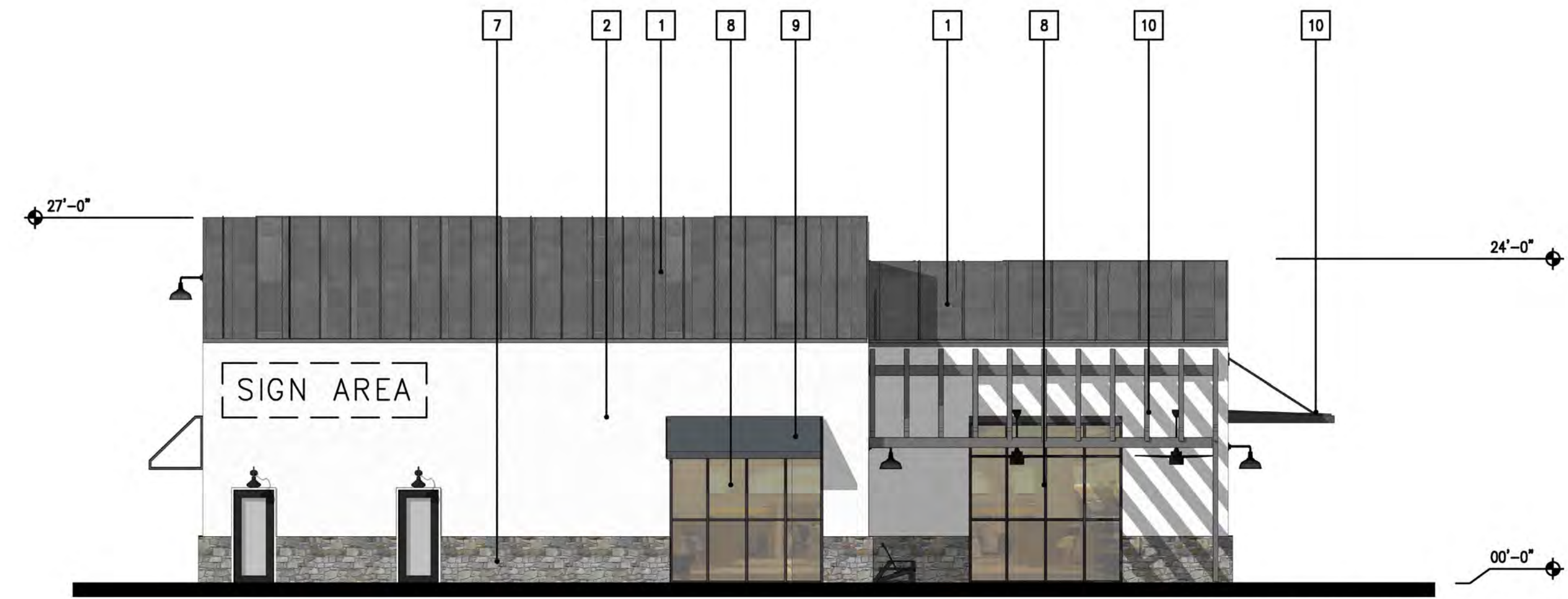
For each use or occupancy with lease space or building frontage with a minimum width of less than 80 feet, one wall sign per building frontage oriented toward a parking lot, mall, street, driveway, alley or freeway, a maximum of one square foot of sign per lineal foot of frontage of the lease space or building occupied by the use, but not to exceed 200 square feet of total sign area.

For each lease space or building with more than 80 feet of building frontage, a maximum of two wall signs shall be allowed on each building frontage oriented toward a parking lot, mall, street, driveway, alley or freeway. Total square footage of all signs on each building frontage shall not exceed one square foot of sign per lineal foot of building frontage, up to a maximum of 200 square feet combined area of all signs on a given frontage.

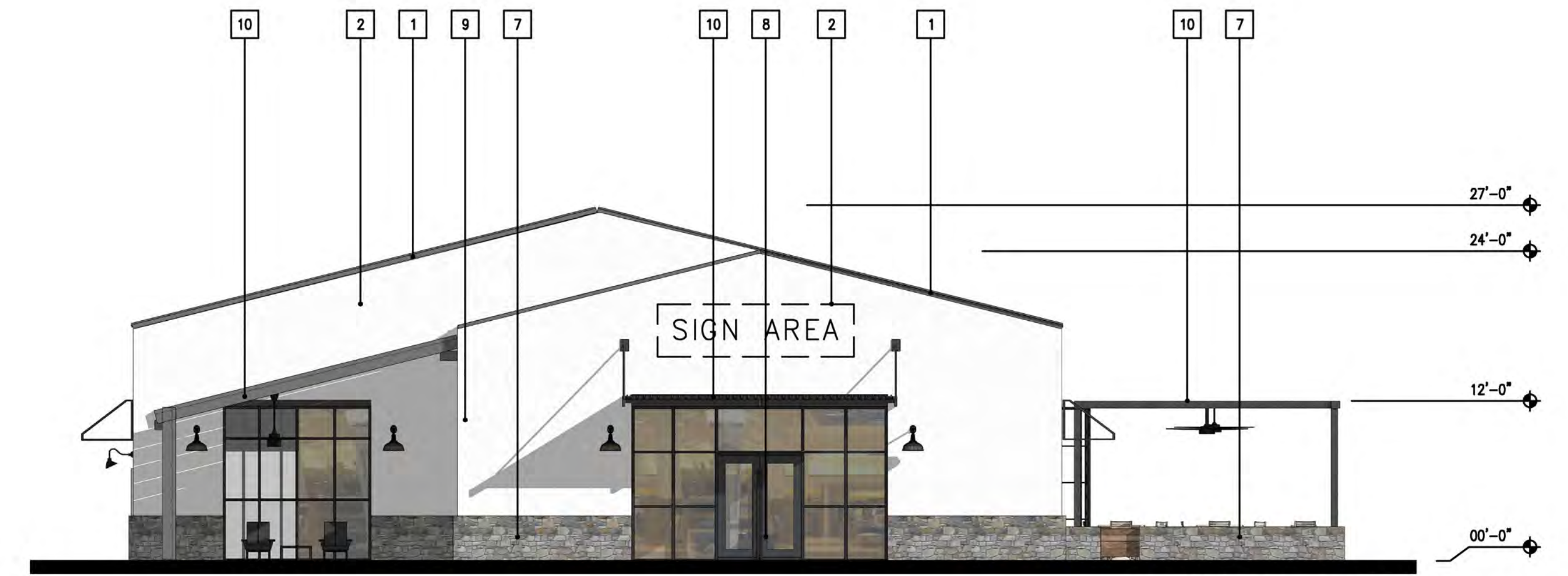
The width of each wall sign shall not exceed 80% of the linear width of the building elevation.



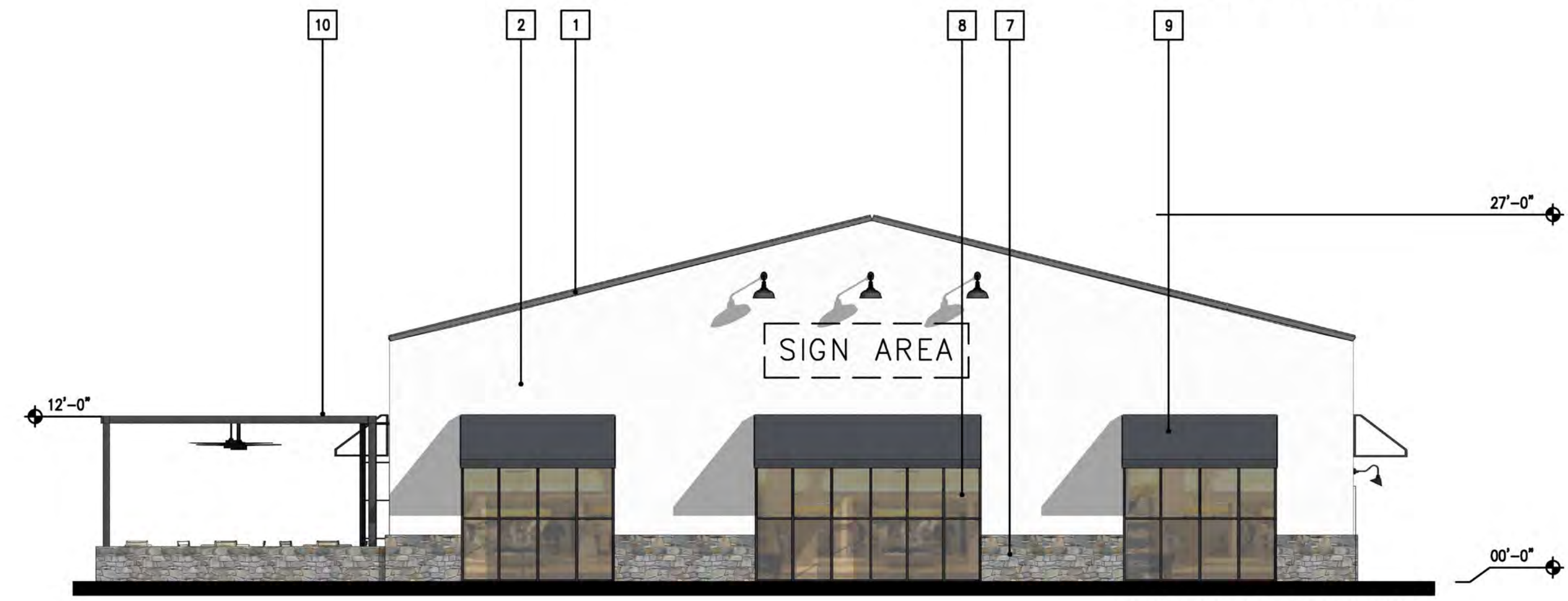




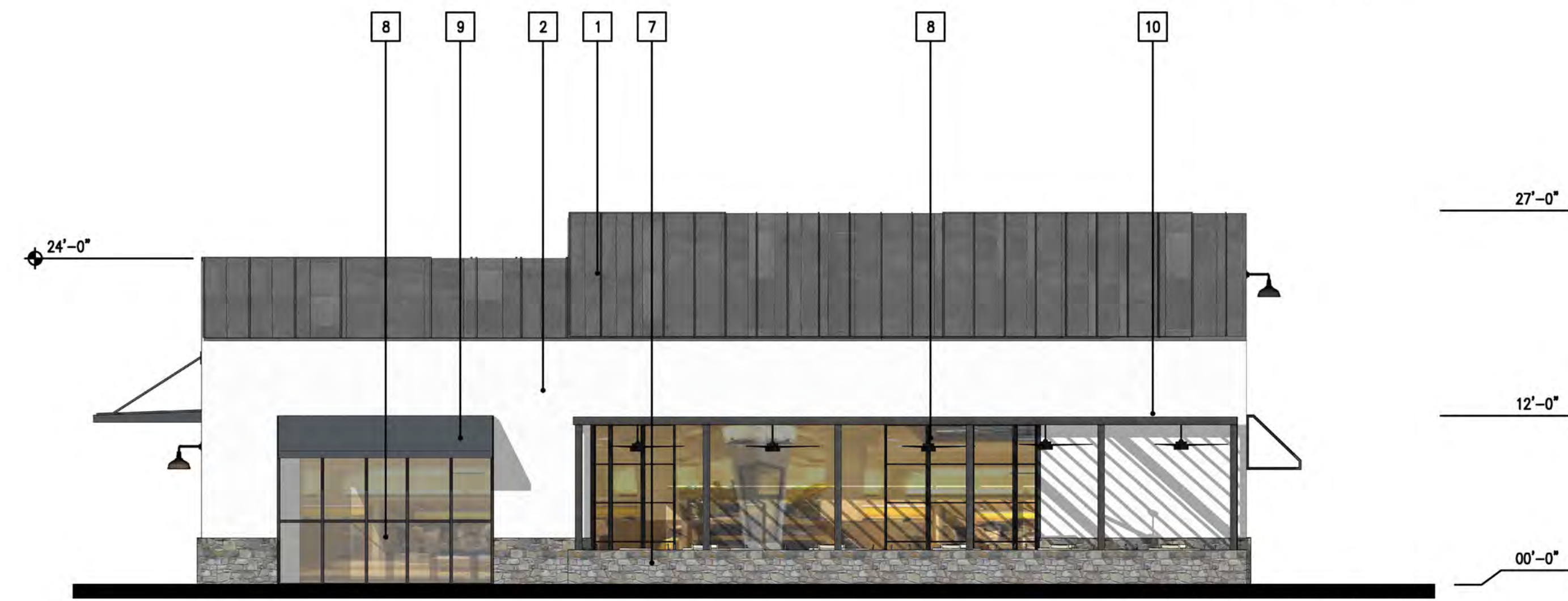
WEST ELEVATION



SOUTH ELEVATION



NORTH ELEVATION



EAST ELEVATION

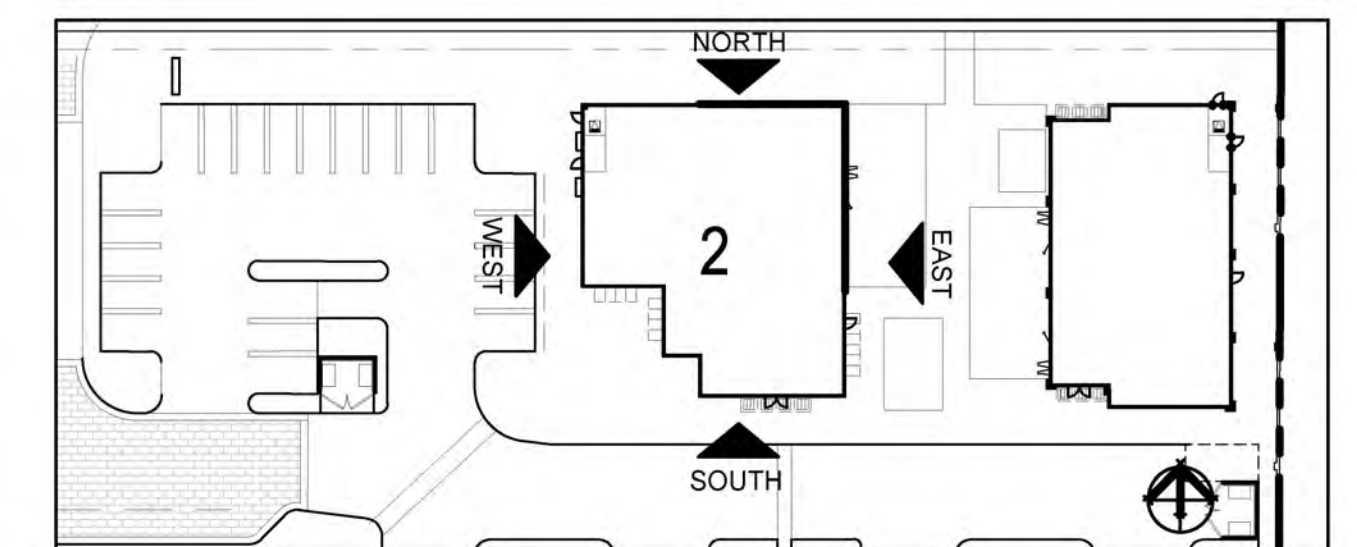
COLORS AND MATERIALS		
1	Metal Roof	Western States Metal, Charcoal Gray
2	Paint	Sherwin Williams, sw 7006 Extra White
3	Paint	Sherwin Williams, sw 7640 Fawn Brindle
4	Paint	Sherwin Williams, sw 7974 Peppercorn
5	Wood	Wood, Natural Stain
6	Stone Veneer	Eldorado Stone, Ledgercut33 - Whitecap
7	Stone Veneer	Eldorado Stone, River Rock Rio Grande
8	Storefront	Anodized Aluminum, Dark Bronze
9	Metal Awning	to match Sherwin Williams, sw6197 Aloof Gray
10	Metal Awning	to match Sherwin Williams, sw7974 Peppercorn

Wall Signs

For each use or occupancy with lease space or building frontage with a minimum width of less than 80 feet, one wall sign per building frontage oriented toward a parking lot, mall, street, driveway, alley or freeway, a maximum of one square foot of sign per lineal foot of frontage of the lease space or building occupied by the use, but not to exceed 200 square feet of total sign area.

For each lease space or building with more than 80 feet of building frontage, a maximum of two wall signs shall be allowed on each building frontage oriented toward a parking lot, mall, street, driveway, alley or freeway. Total square footage of all signs on each building frontage shall not exceed one square foot of sign per lineal foot of building frontage, up to a maximum of 200 square feet combined area of all signs on a given frontage.

The width of each wall sign shall not exceed 80% of the linear width of the building elevation.







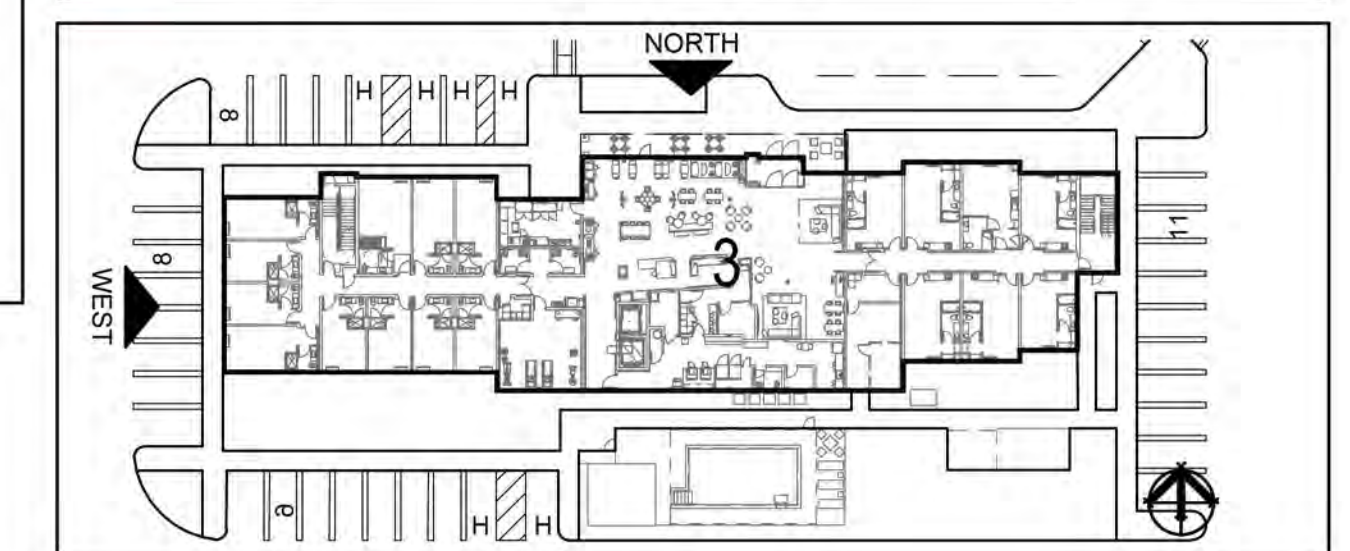
NORTH ELEVATION



WEST ELEVATION

COLORS AND MATERIALS	
<b>Exterior Window Finishes (for avid Hotels wing):</b>	
<b>W1</b>	Public Windows at Red Walls: Aluminum, Clear Anodized or Powder-Coated finish to match (ex: "Resembles Clear Anodized")
<b>W2</b>	Public Windows at Dark Gray Walls: Aluminum, Dark Bronze Anodized or Powder-Coated finish to match (ex: "Resembles Dark Bronze Anodized - Dark Range" or "2604/2605 Dark Bronze")
<b>W2</b>	Guestroom Windows at Light Gray Walls: Aluminum, Dark Bronze Anodized or Powder-Coated finish to match (ex: "Resembles Dark Bronze Anodized - Dark Range" or "2604/2605 Dark Bronze")
<b>W2</b>	Guestroom Windows at Dark Gray Walls: Aluminum, Dark Bronze Anodized or Powder-Coated finish to match (ex: "Resembles Dark Bronze Anodized - Dark Range" or "2604/2605 Dark Bronze")
<b>Exterior Window Finishes (for Candlewood Suites wing):</b>	
<b>W1</b>	Public and Guestroom Windows: Aluminum, Clear Anodized or Powder-Coated finish to match (ex: "Resembles Clear Anodized")
<b>G1</b>	PTAC Grill / Louver Finish (for avid Hotels wing): Aluminum, Dark Bronze Anodized or Powder-Coated finish to match (ex: "Resembles Dark Bronze Anodized - Dark Range" or "2604/2605 Dark Bronze")
<b>G2</b>	PTAC Grill / Louver Finish (Candlewood Suites wing): Varies by location - match adjacent EIFS color
<b>C1</b>	Coping Finish: Varies by location - match adjacent EIFS color (see finishes in table below)
<b>SF1</b>	Exterior/Interior Storefront Finish: Clear Anodized Aluminum
<b>SF1</b>	Automatic Sliding Door Finish: Clear Anodized Aluminum

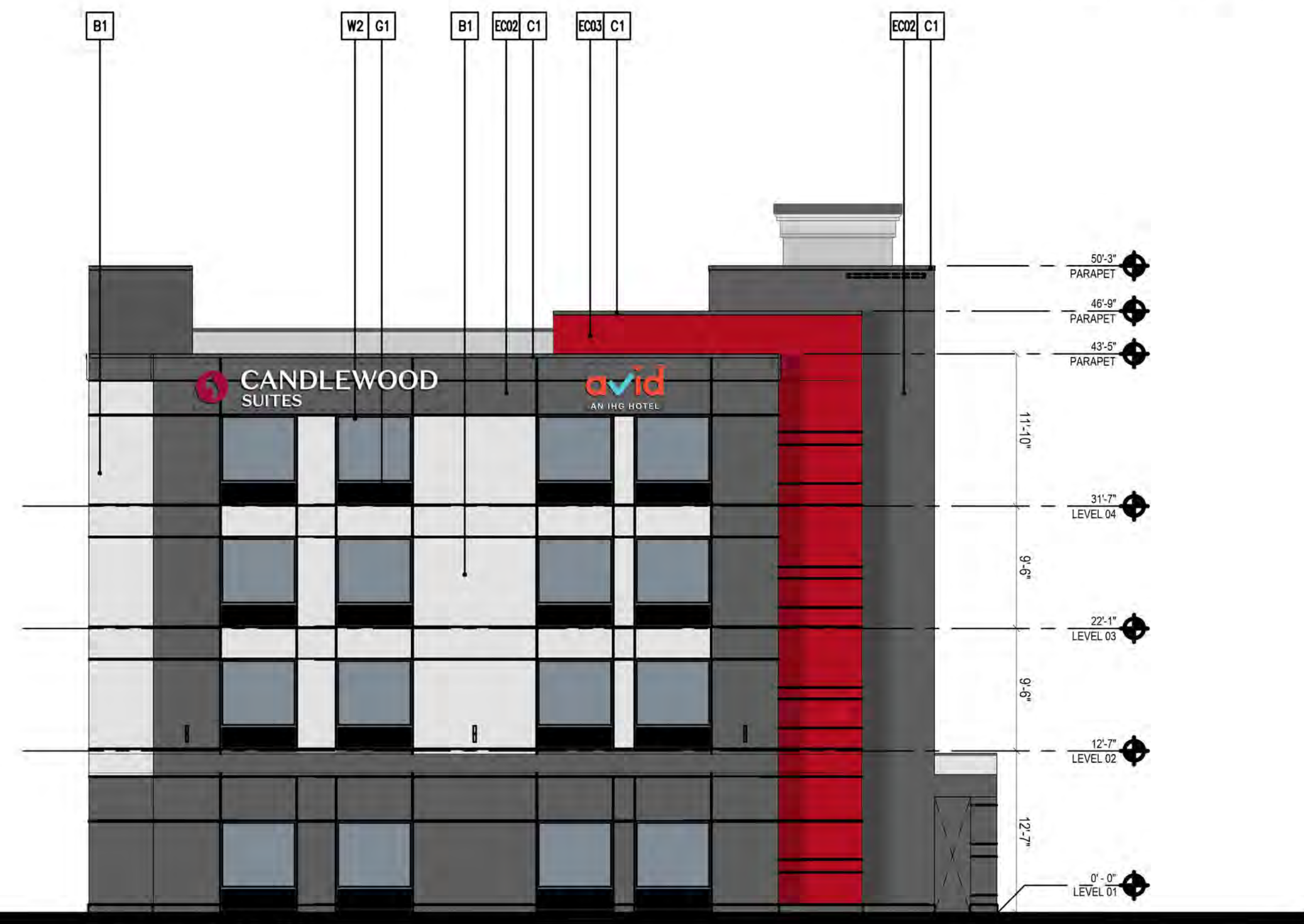
COLORS AND MATERIALS				
Color/Elev Legend	Parex (7 year color warranty, w/ special pigment)	Sherwin Williams (15 year color warranty)	Dryvit (15 year color warranty)	Sto (10 year color warranty, together with the system)
<b>B1</b> - Ice Cube	Parex Sand Fine LB (color to match SW6252 'Ice Cube')	Ultracrete Texture Coating Fine SW 6252 Ice Cube	Sandblast 582 'Diamond Blue'	Fine Sand Finish Color SW 6252
<b>B2</b> - Gray	Parex Sand Fine LB (color to match SW7659 'Summit Gray')	Ultracrete Texture Coating Fine SW 7659 Summit Gray	Sandblast 618 'Antique Gray'	Fine Sand Finish Color SW 7669
<b>B3</b> - Dark Blue	Parex Sand Fine LB (color to match SW6251 'Outerspace')	Ultracrete Texture Coating Fine SW 6251 Outerspace	Sandblast 623A 'Gray Steele'	Fine Sand Finish Color SW 6251
<b>E002</b> - Dark Gray	Parex Sand Fine LB NAC185282 DK GRAY (PHYSICAL)	Ultracrete Texture Coating Fine SW 7019 Charliet Gray	AVID 01 1030S Sandblast Dark Gray	STOLIT X Fine Color NA18-0032
<b>E003</b> - Red	Parex Sand Fine LB NAC185280 RED (PHYSICAL)	Ultracrete Texture Coating Fine SW6964 Cherry Tomato	AVID 03 1030S Sandblast Red	STOLIT X Fine Color NA18-0031
<b>E004</b> - Aqua	Parex Sand Fine LB NAC185281 BLUE (PHYSICAL)	Ultracrete Texture Coating Fine SW9045 BornBora Shore	AVID 02 1030S Sandblast Turquoise	STOLIT X Fine Color NA18-0029







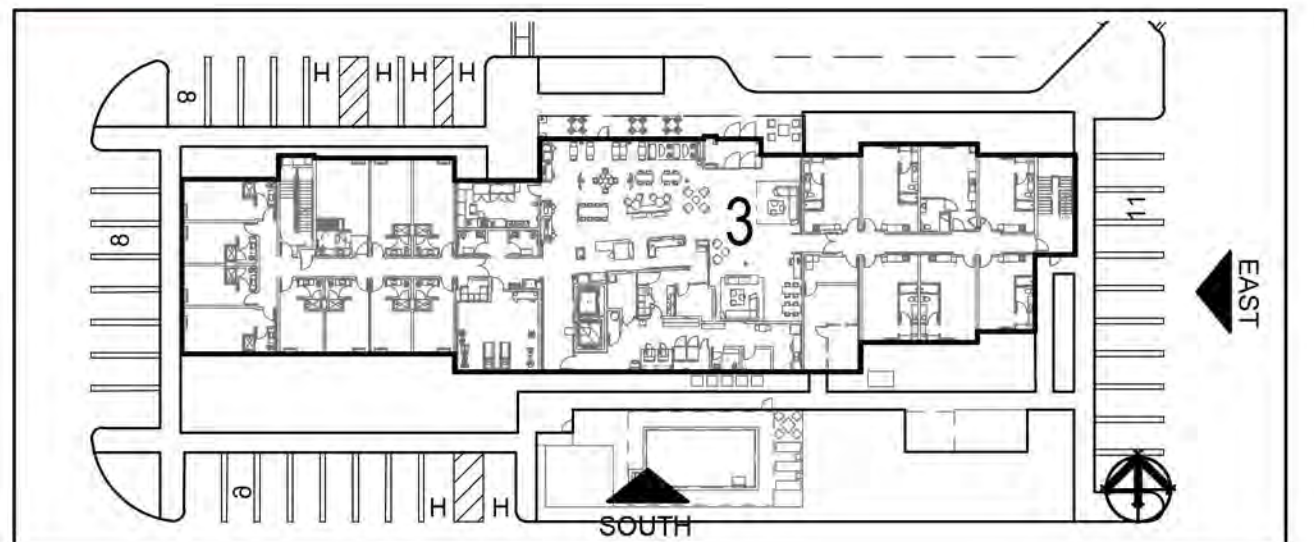
SOUTH ELEVATION



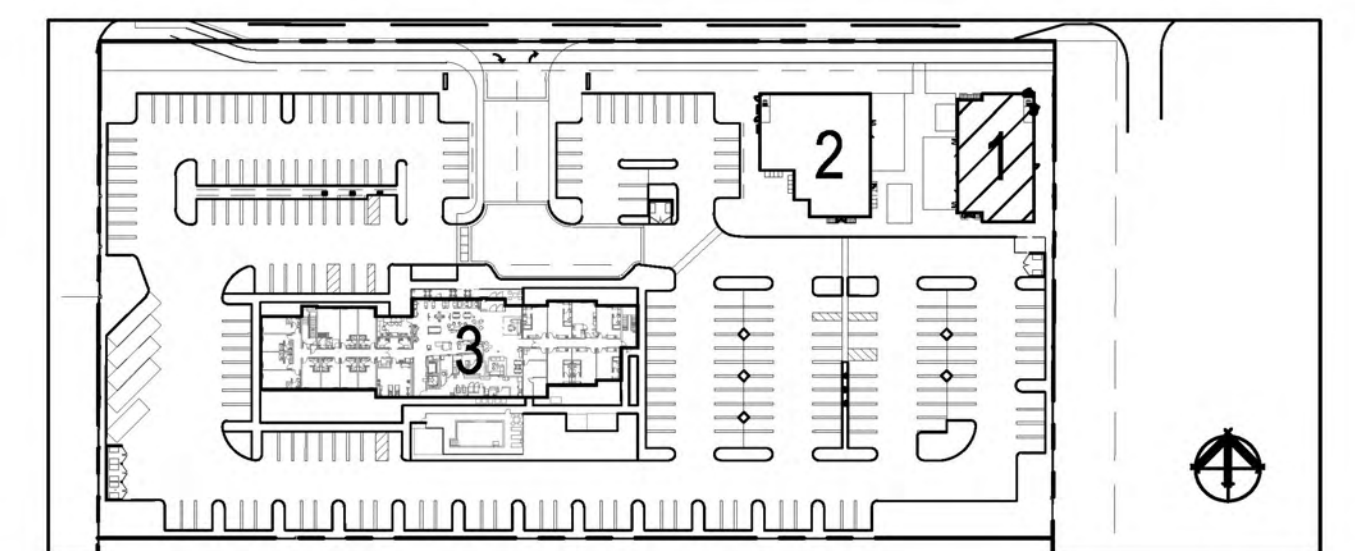
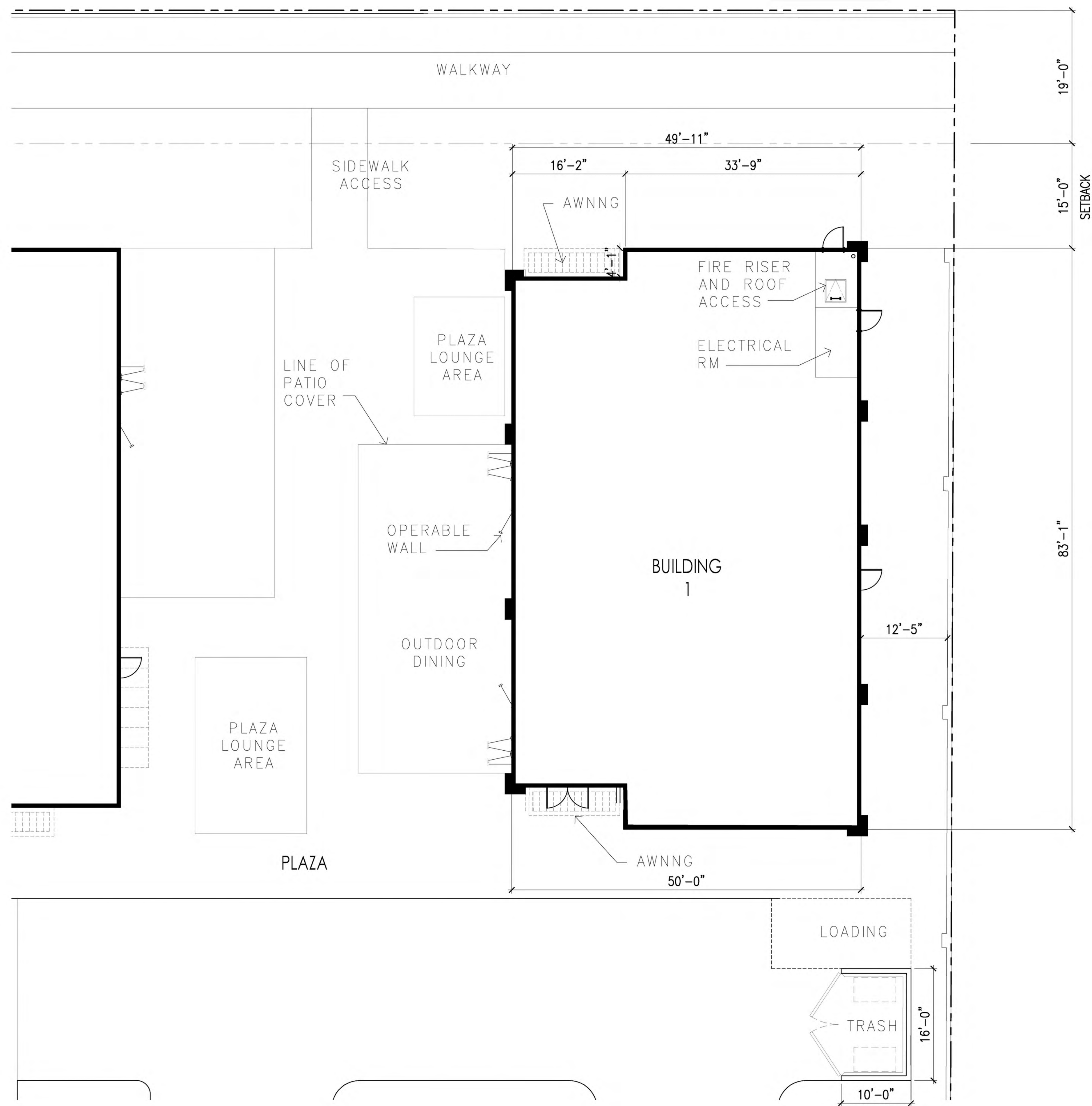
EAST ELEVATION

COLORS AND MATERIALS	
<b>Exterior Window Finishes (for avid Hotels wing):</b>	
<b>W1</b>	Public Windows at Red Walls: Aluminum, Clear Anodized or Powder-Coated finish to match (ex: "Resembles Clear Anodized")
<b>W2</b>	Public Windows at Dark Gray Walls: Aluminum, Dark Bronze Anodized or Powder-Coated finish to match (ex: "Resembles Dark Bronze Anodized - Dark Range" or "2604/2605 Dark Bronze")
<b>W2</b>	Guestroom Windows at Light Gray Walls: Aluminum, Dark Bronze Anodized or Powder-Coated finish to match (ex: "Resembles Dark Bronze Anodized - Dark Range" or "2604/2605 Dark Bronze")
<b>W2</b>	Guestroom Windows at Dark Gray Walls: Aluminum, Dark Bronze Anodized or Powder-Coated finish to match (ex: "Resembles Dark Bronze Anodized - Dark Range" or "2604/2605 Dark Bronze")
<b>Exterior Window Finishes (for Candlewood Suites wing):</b>	
<b>W1</b>	Public and Guestroom Windows: Aluminum, Clear Anodized or Powder-Coated finish to match (ex: "Resembles Clear Anodized")
<b>G1</b>	PTAC Grill / Louver Finish (for avid Hotels wing): Aluminum, Dark Bronze Anodized or Powder-Coated finish to match (ex: "Resembles Dark Bronze Anodized - Dark Range" or "2604/2605 Dark Bronze")
<b>G2</b>	PTAC Grill / Louver Finish (Candlewood Suites wing): Varies by location - match adjacent EIFS color
<b>Coping Finish:</b> Varies by location - match adjacent EIFS color (see finishes in table below)	
<b>Exterior/Interior Storefront Finish:</b> Clear Anodized Aluminum	
<b>Automatic Sliding Door Finish:</b> Clear Anodized Aluminum	

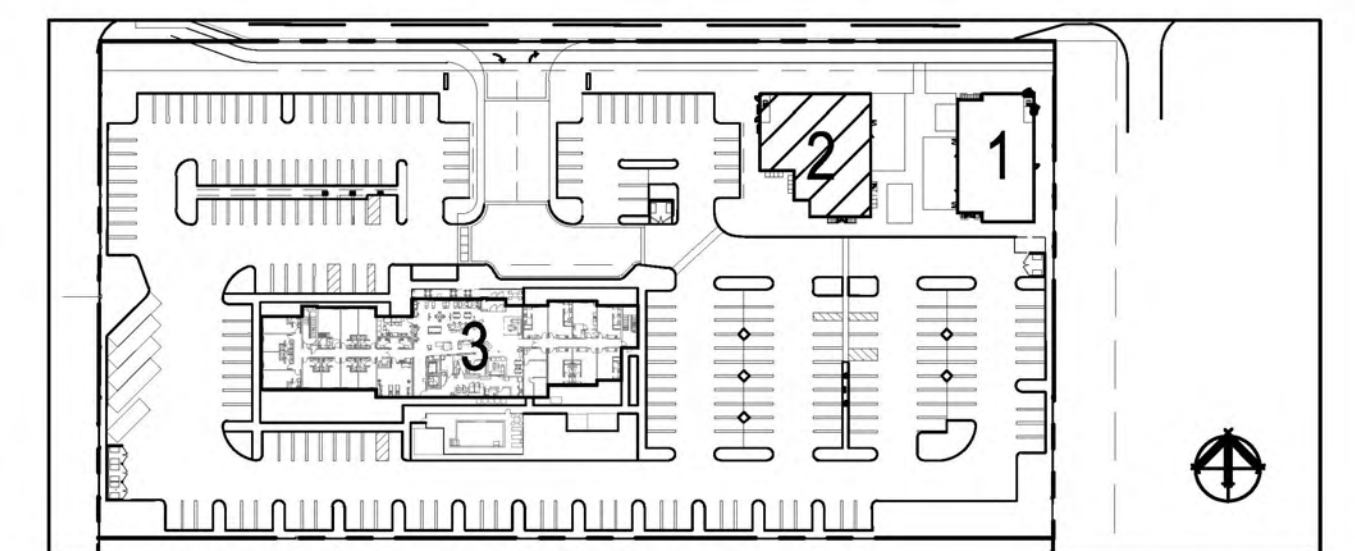
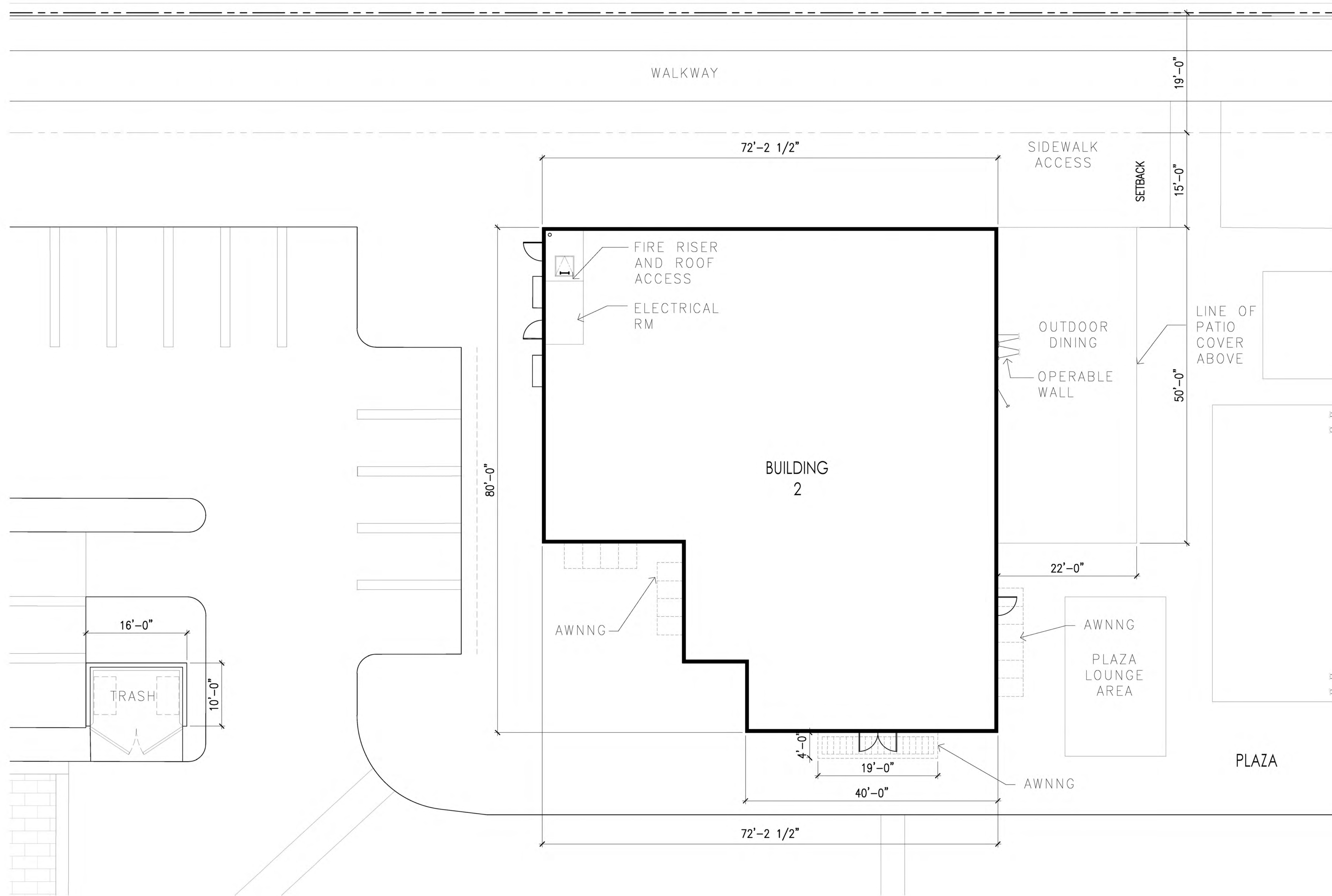
COLORS AND MATERIALS				
Color/Elev Legend	Parex (7 year color warranty, w/ special pigment)	Sherwin Williams (15 year color warranty)	Dryvit (15 year color warranty)	Sto (15 year color warranty, together with the system)
<b>B1 - Ice Cube</b>	Parex Sand Fine LB (color to match SW8252 'Ice Cube')	Ultracrete Texture Coating Fine SW 7659 'Summit Gray'	Sandblast 582 'Diamond Blue'	Fine Sand Finish Color SW 6252
<b>B2 - Gray</b>	Parex Sand Fine LB (color to match SW7659 'Summit Gray')	Ultracrete Texture Coating Fine SW 7659 'Summit Gray'	Sandblast 618 'Antique Gray'	Fine Sand Finish Color SW 7669
<b>B3 - Dark Blue</b>	Parex Sand Fine LB (color to match SW6251 'Outerspace')	Ultracrete Texture Coating Fine SW 6251 'Outerspace'	Sandblast 623A 'Gray Steele'	Fine Sand Finish Color SW 6251
<b>EC02 - Dark Gray</b>	Parex Sand Fine LB NAC185282 DK GRAY (PHYSICAL)	Ultracrete Texture Coating Fine SW 7019 'Charlize Gray'	AVID 01 1030S Sandblast Dark Gray	STOLIT X Fine Color NA18-0032
<b>EC03 - Red</b>	Parex Sand Fine LB NAC185280 RED (PHYSICAL)	Ultracrete Texture Coating Fine SW8964 'Cherry Tomato'	AVID 03 1030S Sandblast Red	STOLIT X Fine Color NA18-0031
<b>EC04-Aqua</b>	Parex Sand Fine LB NAC185281 BLUE (PHYSICAL)	Ultracrete Texture Coating Fine SW9045 'BornBora Shore'	AVID 02 1030S Sandblast Turquoise	STOLIT X Fine Color NA18-0029



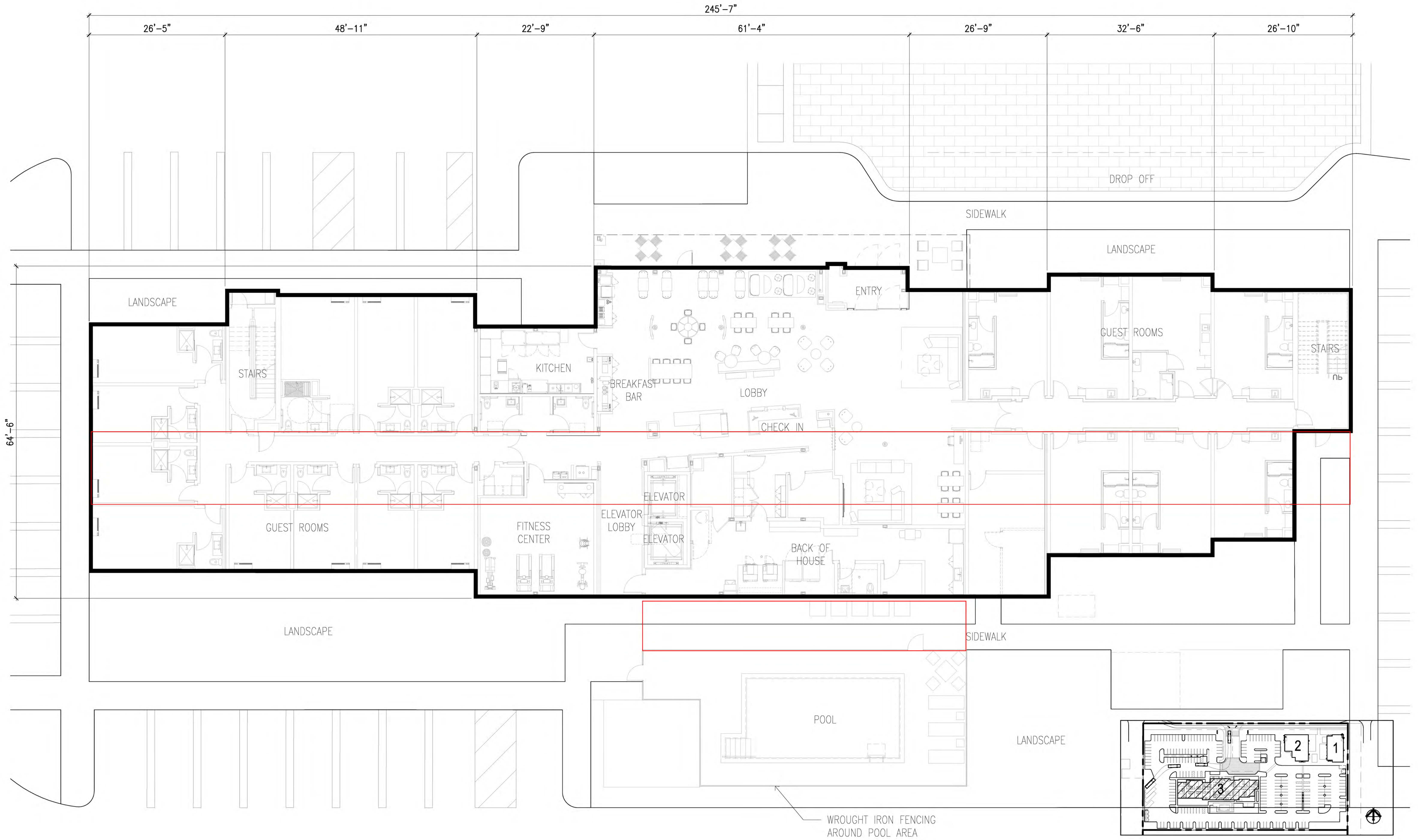




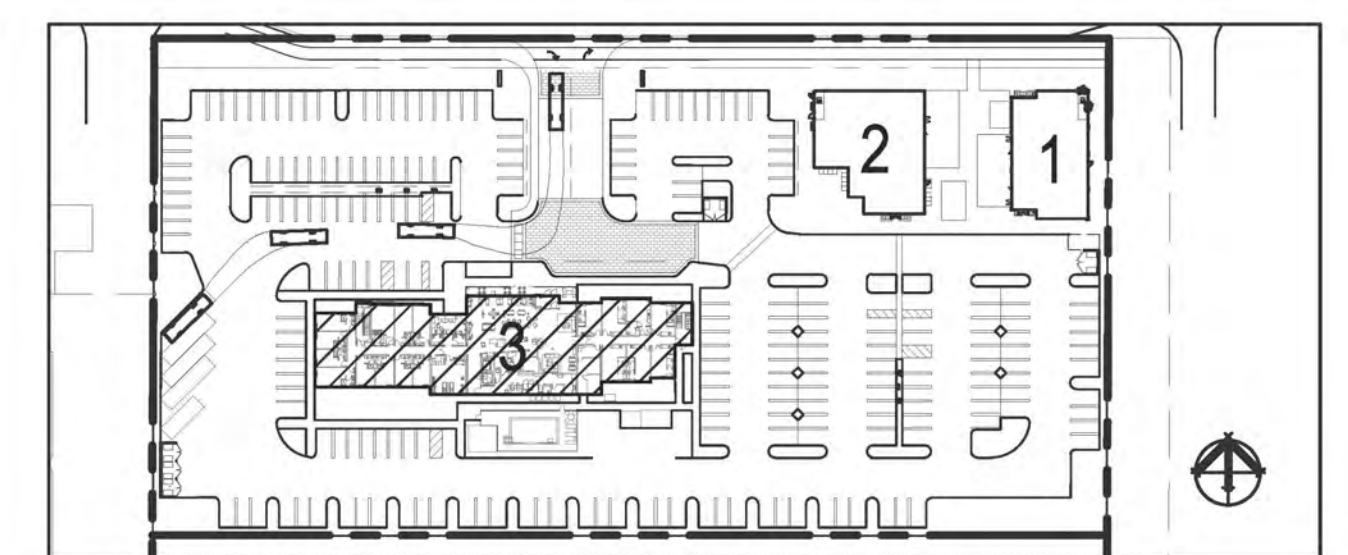
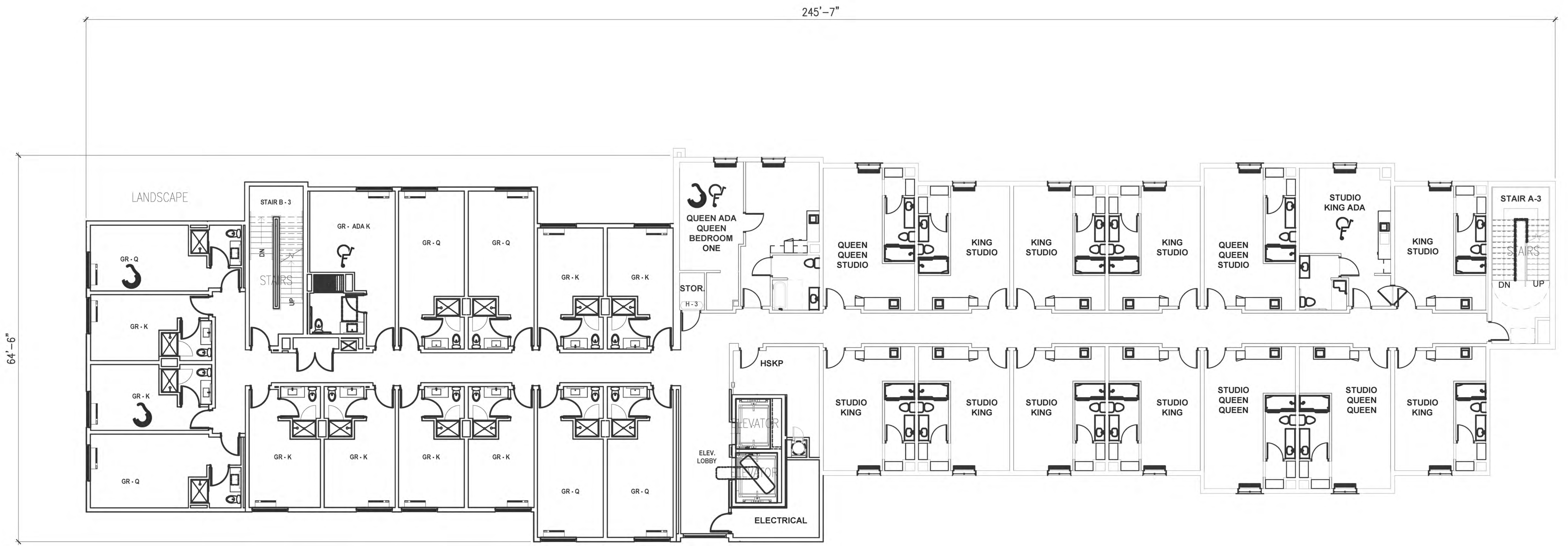
















**DISTRIBUTION PARK**  
Perris, California

**AERIAL RENDER**  
July 03, 2024



**SMSARCHITECTS**





**DISTRIBUTION PARK**  
Perris, California

**AERIAL RENDER**  
July 03, 2024



**SMSARCHITECTS**



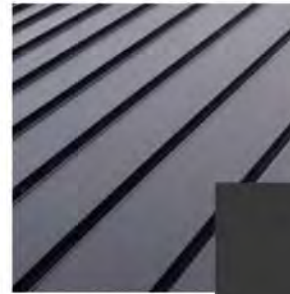






## COLORS AND MATERIALS

1	METAL ROOF	WESTERN STATES METAL CHARCOAL GRAY
2	PAINT	SHERWIN WILLIAMS SW 7006 EXTRA WHITE
3	PAINT	NOT USED
4	PAINT	NOT USED
5	WOOD	WOOD NATURAL STAIN
6	STONE VENEER	NOT USED
7	STONE VENEER	ELDORADO STONE RIVER ROCK-RIO GRANDE
8	STOREFRONT	ANODIZED ALUMINUM DARK BRONZE
9	METAL AWNING	SHERWIN WILLIAMS SW6197 ALOOF GRAY
10	METAL AWNING	SHERWIN WILLIAMS SW7974 PEPPERCORN



METAL

1



PAINT

2

9

10



WOOD

5

7



STONE VENEER

ANODIZED ALUMINUM STOREFRONT & GLASS

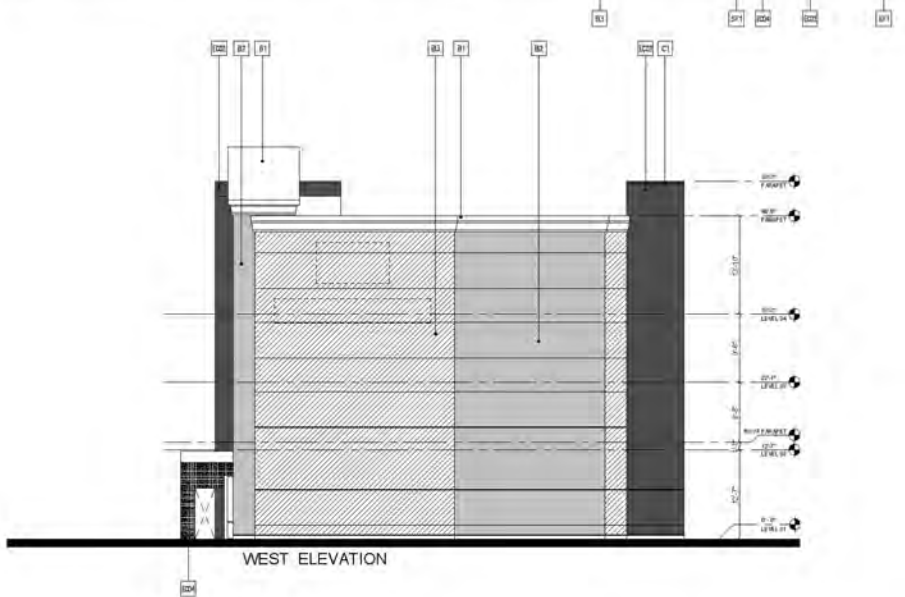


8





NORTH ELEVATION



WEST ELEVATION

**COLORS AND MATERIALS**

**Exterior Window Finishes (for solid hotel wings):**

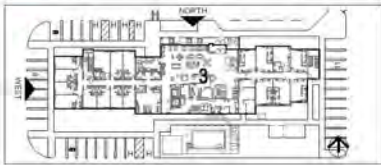
- W1** - Public Windows at 8th Floor: Aluminum, Clear Anodized or Powder Coat. Finish to match Fin. "Aluminum Clear Anodized"
- W2** - Public Windows at 6th Floor: Aluminum, Dark Bronze Anodized or Powder Coated. Finish to match Fin. "Aluminum Dark Bronze Anodized - Dark Bronze" or "2008/2009 Dark Bronze"
- W3** - Guestroom Windows at 4th & 5th Floor: Aluminum, Dark Bronze Anodized or Powder Coated. Finish to match Fin. "Aluminum Dark Bronze Anodized - Dark Bronze" or "2008/2009 Dark Bronze"
- W4** - Guestroom Windows at 2nd & 3rd Floor: Aluminum, Dark Bronze Anodized or Powder Coated. Finish to match Fin. "Aluminum Dark Bronze Anodized - Dark Bronze" or "2008/2009 Dark Bronze"

**Exterior Window Finishes (for Condominium hotel wing):**

- W1** - Public and Guestroom Windows: Aluminum, Clear Anodized or Powder Coat. Finish to match Fin. "Aluminum Clear Anodized"
- C1** - PTAC Unit / Louver Finish (for solid hotel wing): Aluminum, Dark Bronze Anodized or Powder Coated. Finish to match Fin. "Aluminum Dark Bronze Anodized - Dark Bronze" or "2008/2009 Dark Bronze"
- C2** - PTAC Unit / Louver Finish (for Condominium hotel wing): Varies by location. Finish to match Fin. "Aluminum Dark Bronze Anodized - Dark Bronze" or "2008/2009 Dark Bronze"
- C3** - Coping Finish: Varies by location. Finish to match Fin. "Aluminum Dark Bronze Anodized - Dark Bronze" or "2008/2009 Dark Bronze"
- W1** - Exterior/Interior Showfront Finish: Clear Anodized Aluminum
- W1** - Automatic Sliding Door Finish: Clear Anodized Aluminum

**COLORS AND MATERIALS**

Color/Fin Legend	Paint	Starbucks Williams	Dryvit	Tile
B1 - 1st Floor	Paint: Special Finish LE (to match 1st floor)	Ultracolor Exterior Coating Fin. SW 5022 (to match 1st floor)	Smoothed MB Distressed Blue	12" x 12" tile, square with the corner
B2 - 2nd Floor	Paint: Special Finish LE (to match 2nd floor)	Ultracolor Exterior Coating Fin. SW 7008 (to match 2nd floor)	Smoothed MB Distressed Blue	12" x 12" tile, square with the corner
B3 - 3rd Floor	Paint: Special Finish LE (to match 3rd floor)	Ultracolor Exterior Coating Fin. SW 5211 (to match 3rd floor)	Smoothed MB Distressed Blue	12" x 12" tile, square with the corner
B4 - 4th Floor	Paint: Special Finish LE (to match 4th floor)	Ultracolor Exterior Coating Fin. SW 5211 (to match 4th floor)	Smoothed MB Distressed Blue	12" x 12" tile, square with the corner
B5 - 5th Floor	Paint: Special Finish LE (to match 5th floor)	Ultracolor Exterior Coating Fin. SW 5211 (to match 5th floor)	Smoothed MB Distressed Blue	12" x 12" tile, square with the corner
B6 - 6th Floor	Paint: Special Finish LE (to match 6th floor)	Ultracolor Exterior Coating Fin. SW 5211 (to match 6th floor)	Smoothed MB Distressed Blue	12" x 12" tile, square with the corner
B7 - 7th Floor	Paint: Special Finish LE (to match 7th floor)	Ultracolor Exterior Coating Fin. SW 5211 (to match 7th floor)	Smoothed MB Distressed Blue	12" x 12" tile, square with the corner
B8 - 8th Floor	Paint: Special Finish LE (to match 8th floor)	Ultracolor Exterior Coating Fin. SW 5211 (to match 8th floor)	Smoothed MB Distressed Blue	12" x 12" tile, square with the corner
B9 - 9th Floor	Paint: Special Finish LE (to match 9th floor)	Ultracolor Exterior Coating Fin. SW 5211 (to match 9th floor)	Smoothed MB Distressed Blue	12" x 12" tile, square with the corner
B10 - 10th Floor	Paint: Special Finish LE (to match 10th floor)	Ultracolor Exterior Coating Fin. SW 5211 (to match 10th floor)	Smoothed MB Distressed Blue	12" x 12" tile, square with the corner
B11 - 11th Floor	Paint: Special Finish LE (to match 11th floor)	Ultracolor Exterior Coating Fin. SW 5211 (to match 11th floor)	Smoothed MB Distressed Blue	12" x 12" tile, square with the corner
B12 - 12th Floor	Paint: Special Finish LE (to match 12th floor)	Ultracolor Exterior Coating Fin. SW 5211 (to match 12th floor)	Smoothed MB Distressed Blue	12" x 12" tile, square with the corner







- PUBLIC ART
- COOLING MISTERS
- WATER FEATURES
- SHADE STRUCTURES
- OUTDOOR DINING
- FIREPITS
- LOUNGE
- NATURAL COLORS
- STONE VENEER
- AWNINGS
- OPEN TO OUTDOOR DINING
- PEDESTRIAN FRIENDLY





## PRIMARY SIGNAGE - STOREFRONT WALL SIGNS

### INDIVIDUAL LETTER•REVERSE CHANNEL•HALO ILLUMINATION

- Reverse channel letters are to be fabricated out of aluminum with a minimum metal thickness of 1/8" with a painted finish.
- All seams are to be welded and ground smooth
- Channel depth to be no more than 5".
- Letter channels are to be mounted 1.5" maximum from face of wall.
- Stud mounts are to be threaded anchor bolts with round sleeves and are to be painted the color of the fascia. No visible attachments. All details to be coordinated with the G.C.
- Return may be painted a different color than the face. Dark letters with a reflective value of 30 or below are recommended.

### INDIVIDUAL LETTER•TRELLIS MOUNTED SIGN

- Letters are to be fabricated out of aluminum with a minimum metal thickness of 1/8" with a painted finish.
- All seams are to be welded and ground smooth
- Channel depth to be no more than 5".
- Letter channels are to be mounted to top of trellis.
- All details to be coordinated with the G.C.
- Dark letters with a reflective value of 30 or below are recommended.

### SECONDARY SIGNAGE - PEDESTRIAN LEVEL BLADE SIGNS

A double-sided internally illuminated sign mounted perpendicular to the building facade. Can be suspended from custom bracket, or mounted by structural support and is placed at the storefront entrance.

- Each tenant is encouraged to have one double-faced hanging sign per building entrance.
- The creative use of logos and shapes is encouraged in the design of the blade sign.
- Signs are to be wall mounted from a metal bracket.
- Placement to be reviewed with consideration of all adjacent signs
- Signs to be mounted with bottom of sign at a minimum of 8' from finished floor.
- Trade name or logo only, no taglines, slogans, or advertising allowed.

### OPTIONAL SIGNAGE - APPLIED WINDOW GRAPHICS

(excluding "Operational Signs", which are addressed below):

- Only trade name or graphic logo may be used. Store description, advertisements, or tag lines not allowed.
- Metallic, colored, or "etch-look" vinyl or handpainted graphics are to be used.
- All applied graphics to be adhered to interior side of glass.

- Applied window graphics not to exceed 20% of the window area.
- Applied window graphics are to be submitted to the Landlord and approved in writing prior to installation.

### ADDRESS SIGNAGE

The suite number shall to be applied to the exterior glass facade as determined by the Landlord (see diagram). The suite number must be visible to the walkway and be applied as vinyl on glass.

- Numbers to be cut vinyl
- Numbers to be 4" high; in white or metallic.
- No numbers above door unless matching the architectural character and approved by landlord.
- Number to be placed on window adjacent to door on right side. To be placed in lower left corner of glass pane.

### BACK DOOR SIGNS

Signs placed on the back entrance of Tenant's space for purposes of delivery and employee access.

- Landlord will provide design for all back door signs.
- Painted aluminum plaque with vinyl applied name and suite/address number only. No tag lines or slogans allowed.
- Mounted to access door or immediate adjacent wall.
- Tenant will be required to hire Landlord's vendor for back door signage fabrication and installation.

### OPERATIONAL SIGNS

Operational signage indicating hours of operation, telephone numbers, website, specialty store rules and regulations specific to each Tenant. Operational signs are required. No tag lines or slogans allowed.

- Maximum letter height of 1/2".
- Mounted to interior surface of glass, adjacent to entrance door and mounted no higher than 48" from finished floor.
- Total area of sign shall not exceed 2 square feet.
- Tenant graphics on storefront glass shall be computer cut flat vinyl graphics (text/letter/logos)





FIXTURE A



FIXTURE B



FIXTURE C



FIXTURE D



FIXTURE E

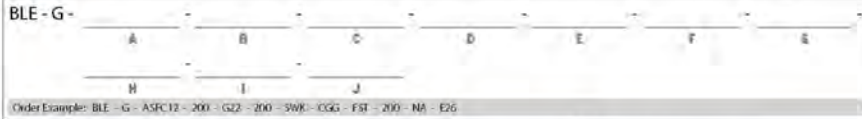






SPS-1177 REV C  
**FIRE CHIEF SIGN LIGHT**

JOB NAME: \_\_\_\_\_ FIXTURE TYPE: \_\_\_\_\_



<p><b>A - SHADE SIZE</b></p> <p><b>FIRE CHIEF:</b></p> <p>ASFC8<sup>1</sup> 8" Shade ASFC10<sup>1</sup> 10" Shade ASFC12 12" Shade ASFC14 14" Shade</p>	<p><b>B - SHADE FINISH (CONTINUED)</b></p> <p><b>NATURAL METALS<sup>2</sup>:</b></p> <p>995 Raw Copper 996 Weathered Copper 997 Raw Brass 998 Weathered Brass 999 Oil-Rubbed Copper</p>	<p><b>F - SHADE ACCESSORIES<sup>4</sup></b></p> <p>NA None WC Wire Cage TGG Heavy Duty Guard CGG Cast Guard WGG Wire Guard</p>
<p><b>B - SHADE FINISH</b></p> <p><b>PORCELAIN FINISHES<sup>2</sup>:</b></p> <p>150 Black 250 White 350 Vintage Green 355 Jadite 455 Cherry Red 550 Yellow 650 Bronze 750 Cobalt Blue 765 Delphite Blue 850 Graphite 950 Metallic Chrome</p>	<p><b>C - GOOSENECK ARMS</b></p> <p><b>GOOSENECK OPTIONS:</b></p> <p>G1<sup>5</sup> G17 G2<sup>5</sup> G19<sup>5</sup> G5<sup>5</sup> G22 G6 G24 G7 G25 G8 G26<sup>5</sup> G9 G32 G10 G34<sup>5</sup> G11<sup>5</sup> G35<sup>5</sup> G12<sup>5</sup> G36<sup>5</sup> G13 G40<sup>5</sup> G14 G64<sup>5</sup> G15 G65<sup>5</sup> G16<sup>5</sup></p>	<p><b>G - GLASS OPTIONS<sup>4</sup></b></p> <p>NA Not Applicable CLR Clear Glass CLR Frosted Glass RIB Ribbed Glass SMK Smoke Crackle Glass BLU Blue Glass RED Red Glass AMB Amber Glass GRN Green Glass</p>
<p><b>POWDER COAT FINISHES<sup>2</sup>:</b></p> <p>100 Black 105 Textured Black 200 White 300 Dark Green 307 Emerald Green 311 Jadite 370 Mint 380 Chartreuse 390 Teal 400 Bam Red 420 Orange 470 Watermelon 480 Blush Pink 490 Magenta 495 Sherbet Orange 500 Buttery Yellow 570 Sunflower 600 Bronze 601 Chocolate 605 Rust 615 Oil-Rubbed Bronze 700 Royal Blue 705 Navy 710 Cobalt Blue 715 Delphite Blue 790 Lavender 800 Industrial Grey 805 Charcoal Granite 810 Graphite 975 Galvanized</p>	<p><b>D - GOOSENECK ARM FINISH</b></p> <p>Please Note: See Section B for all applicable Goose-neck Arm Finish Options. Goose-neck arms are also available in 980-Brushed Aluminum. (1) If Porcelain Finish selected, goose-neck arm will be powder coat painted to match.</p> <p>980 Brushed Aluminum<sup>8</sup></p>	<p><b>H - SHADE ACCESSORY FINISH</b></p> <p>Please Note: See Section B for all applicable Accessory Finish Options. (1) Wire Cage and Guards not available in Natural Metals. (2) If Porcelain Finish is selected, accessory will be powder coat painted to match. (3) If no accessory selected in Section F, select NA.</p> <p>NA Not Applicable</p>
<p><b>E - SWIVEL KNUCKLE</b></p> <p>NA None SWK Swivel Knuckle<sup>9</sup></p>	<p><b>I - MOUNTING ACCESSORY<sup>4</sup></b></p> <p>Please Note: Mounting Accessories below are only applicable with select Mounting Styles. Please refer to product listings on our website for further detail.</p> <p>NA None HDBP Heavy Duty Backing Plate<sup>3</sup> DD Dusk-to-Dawn Photocell DBPC Decorative Backing Plate Cover DCHX Decorative Backing Plate Cover &amp; Hex Cover</p>	<p><b>J - LIGHT SOURCE</b></p> <p>E26 200 Watt Max GU24 23 Watt Max</p>

**IMPORTANT:** (1) Guard & Glass accessory in Section F & G not available with select shade sizes (2) All Porcelain Enamel finished shades feature a white interior and a black outer rim (3) All Powder Coat finished shades, Galvanized excluded, feature a white interior (4) Natural Metals have a longer estimated manufacturing time, please check the website for exact lead time. There are no returns accepted on Natural Metals (5) Not available in Natural Metals (6) Not available for G36, G40, G64, and G65 (7) Guard and Glass accessory reduces incandescent wattage to 100W Max and GU24 Bi-Pin to 18W Max (8) Selection only applicable if a guard is selected in Section F, select NA if no guard is selected (9) Not available with G19 and G40

**MOUNTING STYLE**

OPTIONAL SWIVEL KNUCKLE

SHOWN WITH G15 GOOSENECK ARM

**LUMINAIRE DIMENSIONS**

SHADE CODE	HEIGHT (A)	DIAMETER (B)
ASFC8	8"	8"
ASFC10	10.5"	10"
ASFC12	12"	12"
ASFC14	14.5"	14"

**SPECIFICATIONS**

<p style="text-align: center; background-color: #4a5558; color: white; margin-bottom: 0;"><b>CERTIFICATIONS, LISTINGS &amp; WARRANTY</b></p> <p>MADE IN THE USA Manufactured and Hand-Crafted in Our 60,000 Square Foot Facility Located in Titusville, FL</p> <p>CSA LISTED FOR WET LOCATIONS</p> <p>LIMITED WARRANTY For Additional Information on Our Limited Warranty, Please See Our Terms &amp; Conditions</p> <p>UL CERTIFICATION UL Listed Fixtures Available upon Request. Please Consult Factory for Additional Information.</p>	<p style="text-align: center; background-color: #4a5558; color: white; margin-bottom: 0;"><b>CONSTRUCTION &amp; FINISH (CONTINUED)</b></p> <p><b>COPPER</b> Hand-Spun from High Purity .032 Thick C11000-060 ETP Copper</p> <p><b>BRASS</b> Hand-Spun from High Purity .050" Thick C2600-060 Brass</p> <p><b>GOOSENECK</b> 1/2" Nominal (0.84" Actual) or 3/4" Nominal (1.05" Actual) Sch 40, 6063 Aluminum Goose-neck</p> <p><b>MAX FIXTURE WEIGHT</b> 10 lbs</p>
<p style="background-color: #4a5558; color: white; margin-bottom: 0;"><b>CONSTRUCTION &amp; FINISH</b></p> <p><b>POWDER COAT SHADE</b> Hand-Spun from High Purity 3003-O Temper Aluminum</p> <p><b>GALVANIZE SHADE</b> Hand Spun from High Quality Galvanized Steel</p> <p><b>PORCELAIN SHADE</b> Hand-Spun from 20 Gauge Porcelain Steel</p> <p><b>POWDER COAT FINISHES</b> Polyester Powder Coat Finishes Are Electro-Statically Applied and Thermocured</p> <p><b>PORCELAIN FINISHES</b> Applied by Hand and Fired in a High Temperature Oven</p>	



# WAC LIGHTING

## Sodor

### Outdoor Wall Sconce 3000K

<b>Model &amp; Size</b>	<b>Color Temp &amp; CRI</b>	<b>Finish</b>	<b>Watt</b>	<b>LED Lumens</b>	<b>Delivered Lumens</b>	<b>Title 24</b>
<input type="radio"/> WS-W15708	3000K 90	<input type="radio"/> BK <small>Black</small> <input type="radio"/> BZ <small>Bronze</small>	12W 9W	1000 750	314 315	Yes

Example: **WS-W15708-BZ**

For custom requests please contact [customs@wacighting.com](mailto:customs@wacighting.com)

#### DESCRIPTION

A Steam work inspired approach to a traditional lantern design. Sodor is constructed with a solid die-cast aluminum shade that provides fantastic glare cutoff and a weather resistant powder coated finish. The light engine is factory sealed for maximum protection against the harshest elements.

#### FEATURES

- Weather resistant powder coated finishes
- Light engine is factory sealed for maximum protection from the elements
- Heavy aluminum shade provides great glare cutoff
- Title 24 may not be available for all finishes, check for availability
- ACLED driverless technology
- 5 year warranty

#### SPECIFICATIONS

<b>Color Temp:</b>	3000K
<b>Input:</b>	120 VAC,50/60Hz
<b>CRI:</b>	90
<b>Dimming:</b>	ELV: 100-10%
<b>Rated Life:</b>	54000 Hours
<b>Standards:</b>	ETL, cETL, P65, Title 24 JA8-2019 Compliant, Dark Sky Friendly, Wet Location Listed
<b>Construction:</b>	Aluminum hardware with glass diffuser

Fixture Type: \_\_\_\_\_  
 Catalog Number: \_\_\_\_\_  
 Project: \_\_\_\_\_  
 Location: \_\_\_\_\_



#### FINISHES:



#### LINE DRAWING:



WS-W15708

wacighting.com | Phone (800) 526-2588 | Fax (800) 526-2585 | Headquarters/Eastern Distribution Center 44 Harbor Park Drive Port Washington, NY 11050

WAC Lighting reserves the right to modify the design of our products at any time as part of the company's continuous improvement program. September 2022



# WAC LIGHTING

## Rockport

### Outdoor Wall Sconce 3000K

Model & Size	Color Temp & CRI	Finish	Watt	LED Lumens	Delivered Lumens
WS-W77211 11"	3000K 90	<input type="radio"/> AL Brushed Aluminum <input type="radio"/> BK Black	17W	1346	763

Example: **WS-W77211-BK**

For custom requests please contact [customs@wacighting.com](mailto:customs@wacighting.com)

#### FEATURES

- Downlight illumination
- ACLED driverless technology
- 5 Year warranty

#### SPECIFICATIONS

Color Temp:	3000K
Input:	120 VAC, 50/60Hz
CR:	90
Dimming:	ELV: 100-10% ,TRIAC: 100-10%
Rated Life:	54000 Hours
Standards:	ETL, cETL, IP65, Title 24 JA8-2019 Compliant Wet Location Listed
Construction:	Aluminum body, etched acrylic diffuser

Fixture Type: \_\_\_\_\_  
Catalog Number: \_\_\_\_\_  
Project: \_\_\_\_\_  
Location: \_\_\_\_\_



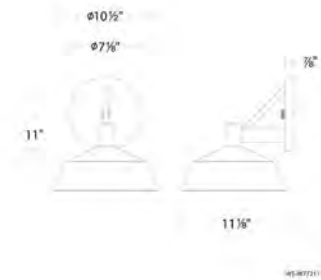
#### FINISHES:



Brushed  
Aluminum

Black

#### LINE DRAWING:



[wacighting.com](http://wacighting.com) | Phone (800) 526.2588 | Fax (800) 526.2585 | Headquarters/Eastern Distribution Center 44 Harbor Park Drive Port Washington, NY 11050

WAC Lighting retains the right to modify the design of our products at any time as part of the company's continuous improvement program. September 2022

**DISTRIBUTION PARK**  
Perris, California

**LIGHT FIXTURE C**  
July 03, 2024



**SMSARCHITECTS**



# WAC LIGHTING

Fixture Type: \_\_\_\_\_

Catalog Number: \_\_\_\_\_

Project: \_\_\_\_\_

Location: \_\_\_\_\_

## Scoop

16W Wall Mount 3000K

Model & Size:  WS-W20506 10"-Wide      Color Temp & CRI:  3000K 90      Watt: 16W      Lumens: 805

Finish:  
 AL Die-Cast Aluminum  
 BK Black  
 BZ Bronze  
 WT White

Example: **WS-W20506-AL**

### DESCRIPTION

With a die-cast aluminum housing and etched glass, Scoop provides lasting performance for years to come. It features a patent pending design for a water and dust proof IP65 Rated luminaire. Mounts in both upward and downward orientations.

### FEATURES

- Title 24 may not be available for all finishes, check for availability
- Driver concealed within the fixture
- 5 year warranty

### SPECIFICATIONS

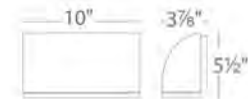
**Construction:** Die-cast Aluminum  
**Power:** 16W  
**Input:** 120-277 VAC, 50/60Hz  
**Dimming:** ELV: 100-15%, 0-10V: 100-10%  
**Light Source:** Integrated LED  
**Rated Life:** 70000 Hours  
**Mounting:** Mounts directly to junction box. Can be mounted on wall in all orientations  
**Finish:** Electrostatically Powder Coated: White, Bronze, Black, Brushed Aluminum  
**Operating Temp:** -40°F to 122°F (-40°C to 50°C)  
**Standards:** UL, cUL, Wet Location Listed, IP65, Title 24 JA8-2019 Compliant, ADA



### FINISHES:



### LINE DRAWING:



wacighting.com | Phone (800) 526-2588 | Fax (800) 526-2585 | Headquarters/Eastern Distribution Center 44 Harbor Park Drive Port Washington, NY 11050

WAC Lighting retains the right to modify the design of our products at any time as part of the company's continuous improvement program. September 2022



# dweLED

## Nest

### Outdoor Wall Sconce 3000K

Model & Size	Color Temp & CRI	Watt	LED Lumens	Delivered Lumens	Finish
<input checked="" type="radio"/> WS W26716 16"	<input checked="" type="radio"/> 3000K 90	<input checked="" type="radio"/> 13W	<input checked="" type="radio"/> 280	<input checked="" type="radio"/> 210	<input checked="" type="radio"/> BZ Bronze

Example: **WS-W26716-BZ**

#### DESCRIPTION

A harmonious blend of arts and crafts, Nest is constructed with extruded aluminum louvers to create a dramatic pattern of illumination. The frame is solid die cast aluminum with weather resistance and a powder coated finish. The light engine is factory sealed for maximum protection against the harshest elements.

#### FEATURES

- Extruded aluminum louvers create a dramatic pattern of light to generate interest
- Weather resistant powder coated finishes
- ACLED driverless technology
- 5 year warranty

#### SPECIFICATIONS

Color Temp:	3000K
Input:	120 VAC, 50/60Hz
CRI:	90
Dimming:	ELV, 100 - 10%
Rated Life:	50000 Hours
Standards:	ETL, cETL, IP65, Dark Sky Friendly Wet Location Listed
Construction:	Aluminum hardware with glass diffuser

Fixture Type:	<input type="text"/>
Catalog Number:	<input type="text"/>
Project:	<input type="text"/>
Location:	<input type="text"/>

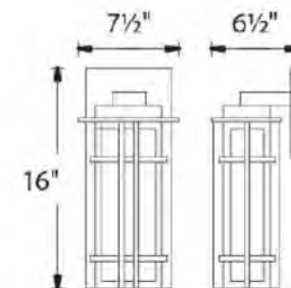


#### FINISHES



Bronze

#### LINE DRAWING







**PLANTING LEGEND - RETAIL**

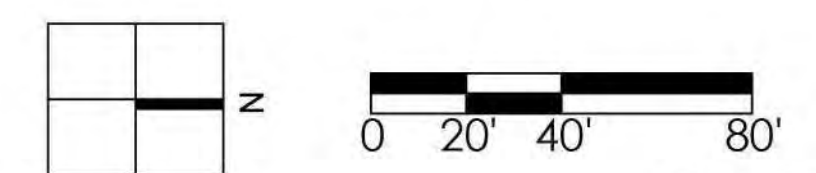
TREES					
SYMBOL	BOTANICAL/COMMON NAME	SIZE	QTY	WUCOLS	REMARKS
●	Cercidium 'Desert Museum'	24" Box	15	L	Street Tree
	Blue Palo Verde	36" Box	4	L	Multi
●	Chitalpa tashkentensis Chitalpa	24" Box	35	L	Standard
●	Lagerstroemia l 'Muskogee' Crape Myrtle	24" Box	16	M	Multi
●	Magnolia g. 'Little Gem' Magnolia	24" Box	4	M	Standard
●	Prosopis chilensis Chilean Mesquite	36" Box	4	M	Multi
●	Ulmus parvifolia Chinese Elm	24" Box	30	L	Standard
●	Tristania conferta Brisbane Box	24" Box	25	M	Standard

SHRUBS					
SYMBOL	BOTANICAL/COMMON NAME	SIZE	QTY	WUCOLS	REMARKS
■	Baccharis p. 'Centennial' Coyote Bush	5 Gal		L	
	Cassia phyllodenia Silverleaf Cassia	5 Gal		L	
	Dietes bicolor Fortnight Lily	5 Gal		L	
	Festuca mairei Atlas Fescue	5 Gal		M	
	Heteromeles arbutifolia Toyon	5 Gal		M	
	Muhlenbergia rigens Deer Grass	5 Gal		M	
	Salvia c. 'Allen Chickering' Allen Chickering Sage	5 Gal		L	
	Salvia greggii Autumn Sage	5 Gal		L	
	Salvia leucantha Mexican Sage	5 Gal		L	
	Ruellia b. 'Katie' Mexican Petunia	5 Gal		L	
	Westringia fruticosa Coast Rosemary	5 Gal		L	
	Westringia l. 'Grey Box' Dwarf Coast Rosemary	5 Gal		L	
	Westringia 'Wynabbie Gem' Wynabbie Coast Rosemary	5 Gal		L	

ACCENTS					
SYMBOL	BOTANICAL/COMMON NAME	SIZE	QTY	WUCOLS	REMARKS
■	Agave americana Century Plant	5 Gal	3	L	
	Agave 'Blue Flame' Blue Flame Agave	5 Gal	2	L	
	Agave 'Blue Glow' Blue Glow Agave	5 Gal	13	L	
	Aloe striata Coral Aloe	1 Gal	23	L	
	Hesperaloe parviflora Red Yucca	5 Gal	11	L	

GROUND COVER					
SYMBOL	BOTANICAL/COMMON NAME	SIZE	SPACING	WUCOLS	REMARKS
■	Carissa m. 'Green Carpet' Prostrate Natal Plum	1 Gal	48" O.C.	M	
	Rosmarinus o. 'Huntington Carpet' Prostrate Rosemary	1 Gal	48" O.C.	L	
	Lonicera j. 'Halliana' Hall's Honeysuckle	1 Gal	48" O.C.	L	
	Carissa m. 'Green Carpet' Prostrate Natal Plum	1 Gal	36" O.C.	M	
	Lantana 'Gold Mound' Yellow Lantana	1 Gal	36" O.C.	L	
	Trachelospermum jasminoides Star Jasmine	1 Gal	24" O.C.	M	

SITE AREA: 199,505 SF  
 % LANDSCAPE REQUIRED: 10%  
 AREA LANDSCAPING PROVIDED (NOT INCLUDING ROW): 41,263 SF  
 % LANDSCAPE PROVIDED: 21%



SHEET 2

E. Dawes St & Painted Canyon Rd

22-129  
 12.15.22 03.27.24  
 03.08.23 05.06.24  
 05.23.23 06.28.24

Perris, California



HUNTER LANDSCAPE

711 FEE ANA STREET PLACENTIA, CA 92870  
 714.986.2400 FAX 714.986.2408