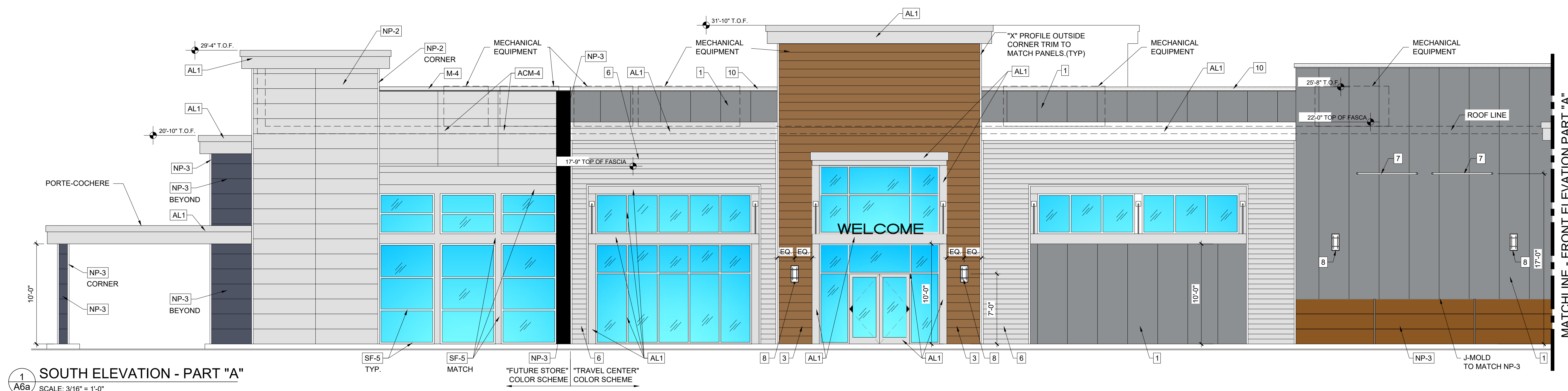


REVISIONS	BY

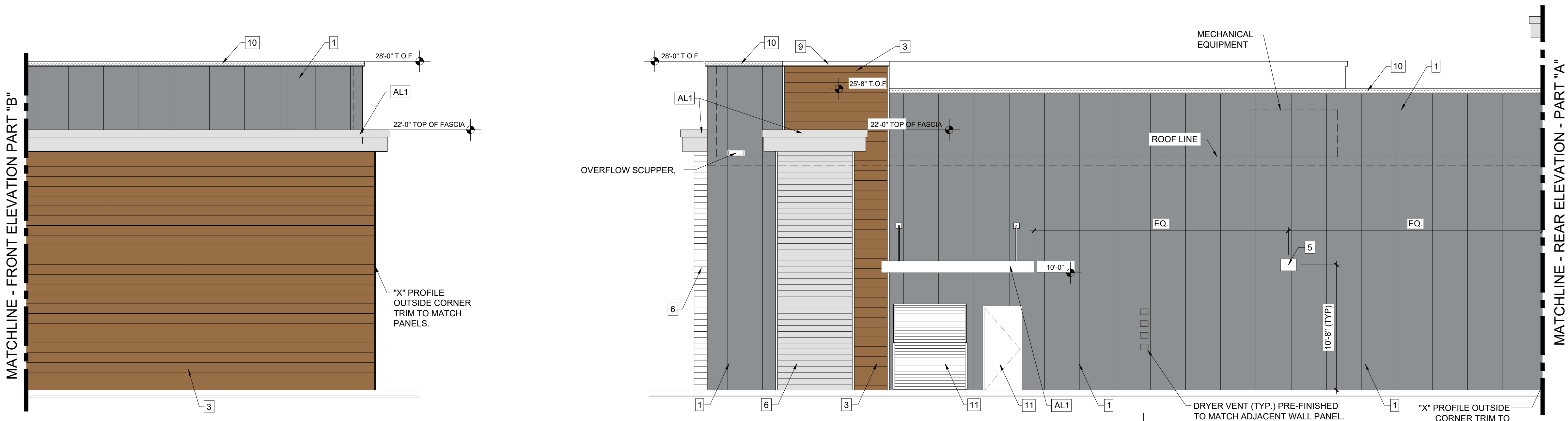
PLANS PREPARED BY:
A & S ENGINEERING INC.
 PLANNING ENGINEERING CONSTRUCTION MANAGEMENT
 28405 SAND CANYON ROAD, SUITE B
 CANYON COUNTRY, CA 91387
 PHONE #: (661) 250-9300; FAX #: (661) 250-9333

ETHANAC TRAVEL CENTER
 STORE # -
 ADDRESS - ETHANAC ROAD AND TRUMBLE ROAD
 PERRIS, CA 92585

DRAWN O.S.
 CHECKED
 DATE 09/21/2023
 SHEET TITLE C-STORE
 EXTERIOR ELEVATIONS
 JOB NUMBER
 SHEET NUMBER
A6a

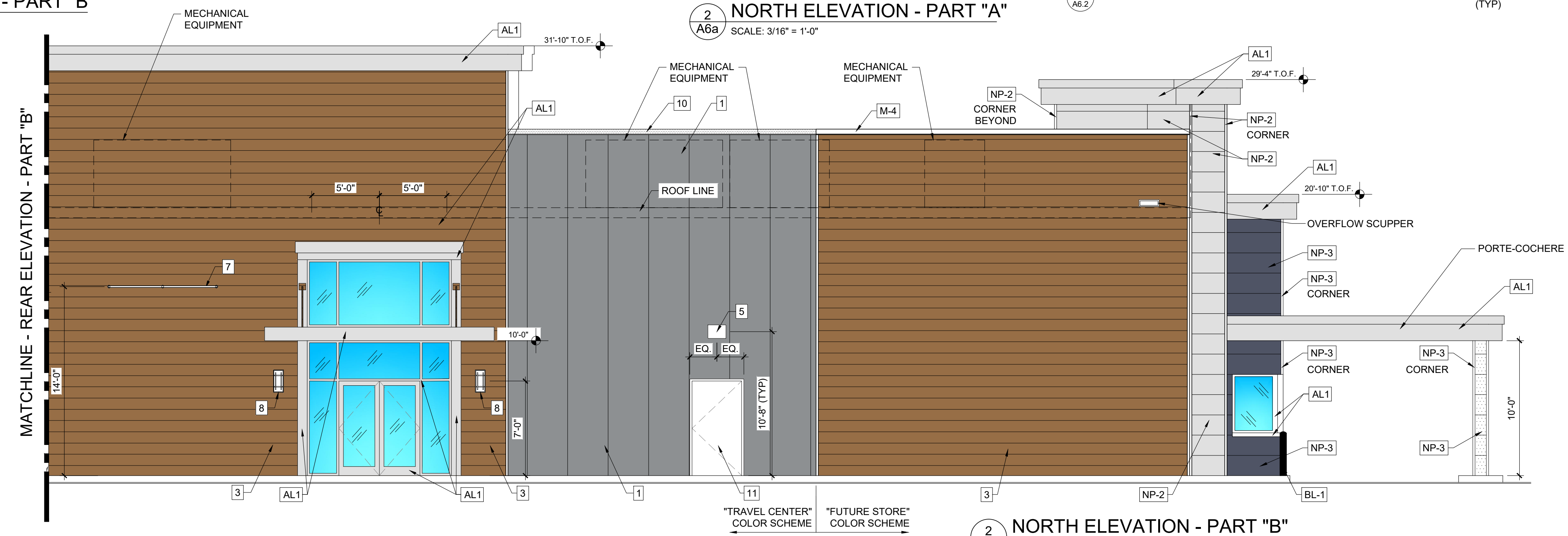


1 SOUTH ELEVATION - PART "A"
 SCALE: 3/16" = 1'-0"



1 SOUTH ELEVATION - PART "B"
 SCALE: 3/16" = 1'-0"

2 NORTH ELEVATION - PART "A"
 SCALE: 3/16" = 1'-0"



2 NORTH ELEVATION - PART "B"
 SCALE: 3/16" = 1'-0"

NOTE
 CONTRACTOR IS TO INSTALL ALL JOINTS/REVELAS IN STUCCO, TILE, AND NICHHA ONLY IN THE LOCATIONS SHOWN AND DIMENSIONED ON THE PLANS. ANY DEVIATION MUST BE PRE-APPROVED IN WRITING BY TRAVEL CENTER'S CORPORATE ARCHITECT. FAILURE TO FOLLOW THIS WILL RESULT IN THE JOINTS BEING REMOVED, REINSTALLED PROPERLY AND THAT AREA REFINISHED AT THE CONTRACTOR'S EXPENSE.

WALL TEXTURE LEGEND

2" INSULATED EXTERIOR METAL WALL PANEL SYSTEM	HORIZONTAL RIBBED METAL SIDING
	HARDIE® PLANK SMOOTH JH40-30 TIMBER BARK

TRAVEL CENTER EXTERIOR LEGEND

1 2" INSULATED EXTERIOR METAL WALL PANEL SYSTEM COLOR: "ZINC GRAY 432R1583" FURNISHED BY OWNER, INSTALLED BY CONTRACTOR	7 WALL ART LIGHT FIXTURE - SEE ELECTRICAL FURNISHED BY OWNER, INSTALLED BY CONTRACTOR
2 NOT USED	8 WALL SCONCE LIGHT FIXTURE - SEE ELECTRICAL FURNISHED BY OWNER, INSTALLED BY CONTRACTOR
3 HARDIE® PLANK SMOOTH JH40-30 TIMBER BARK	9 PARAPET METAL COPING PAINT SHERWIN WILLIAMS "BAKED COOKIE" SW96098, IN A SATIN FINISH, FURNISHED AND INSTALLED BY ROOFING CONTRACTOR
4 NOT USED	10 PRE-FINISHED 24 GAUGE METAL ROOF COPING - EQUAL TO BERRIDGE, STANDARD COLOR, KYNAR 500 "ZINC GRAY" FURNISHED AND INSTALLED BY ROOFING CONTRACTOR
5 WALL PACK LIGHT FIXTURE - SEE ELECTRICAL FURNISHED BY OWNER, INSTALLED BY CONTRACTOR	11 DOORS AND FRAMES TO BE PAINTED "GAINLET GRAY" SW97019, IN A SATIN FINISH
6 HORIZONTAL RIBBED SIDING SYSTEM ATAS RIGID WALL (MFR160) (OR EQUAL), 24 GAUGE "ACRYLIC COATED GALVALUME" - SYSTEM INCLUDES CONCEALED FASTENERS AND MATCHING TRIM, JOINTS, AND TRANSITIONS - FURNISHED BY OWNER, INSTALLED BY CONTRACTOR	AL1 CLEAR ANODIZED ALUMINUM FINISH

NOTE
 ALL EXTERIOR PAINT TO BE "CONFLEX XL" HIGH-BUILD ELASTOMERIC COATING SPECIFICATION.

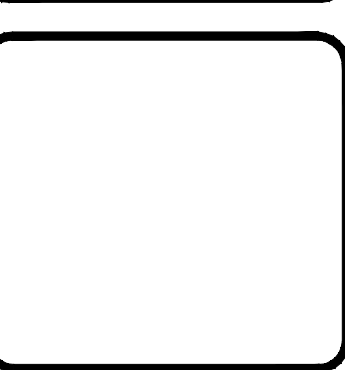
"FUTURE STORE" EXTERIOR FINISHES LEGEND

BL-1 PLASTIC BOLLARD SLEEVE
3 HARDIE® PLANK SMOOTH JH40-30 TIMBER BARK
NP-2 FIBER CEMENT WALL PANEL (BASIS OF DESIGN - NICHHA ILLUMINATION SERIES - BLAZE)
NP-3 FIBER CEMENT WALL PANEL (BASIS OF DESIGN - NICHHA ILLUMINATION SERIES - KNIGHTS ARMOR)
M-4 PARAPET CAP (ANODIC CLEAR)
SF-5 ALUMINUM STOREFRONT SYSTEM
ACM-4 MODULAR SOFFIT/ FASCIA

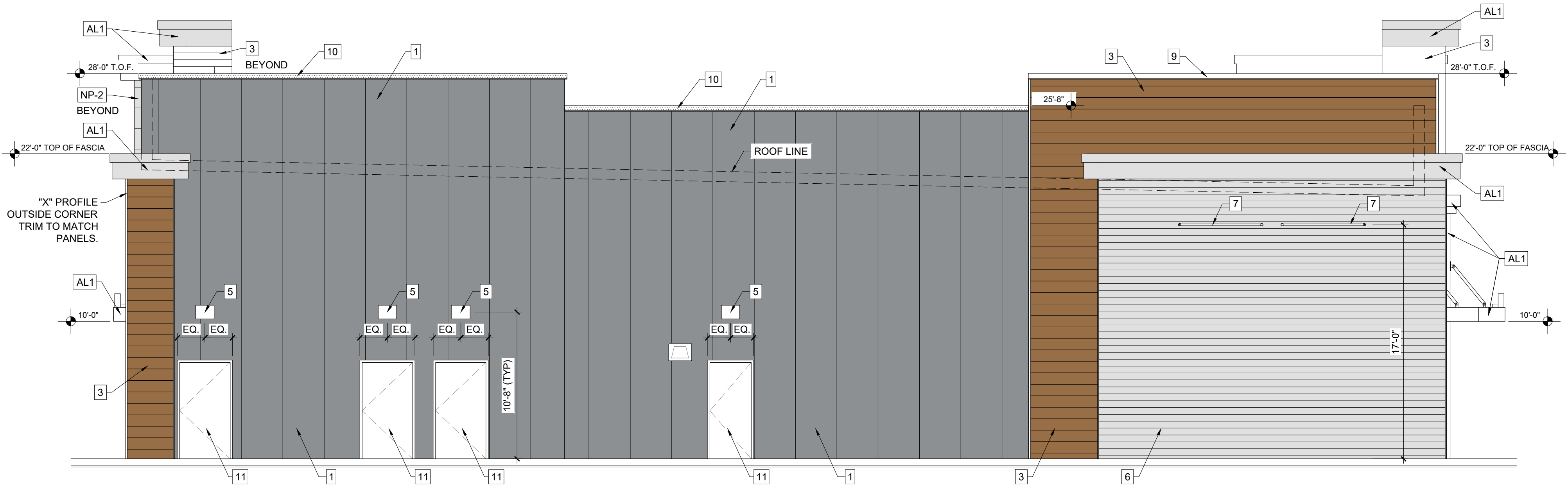
H:\P..._F... (VERBODEN TOE) DRAWINGS

REVISIONS	BY

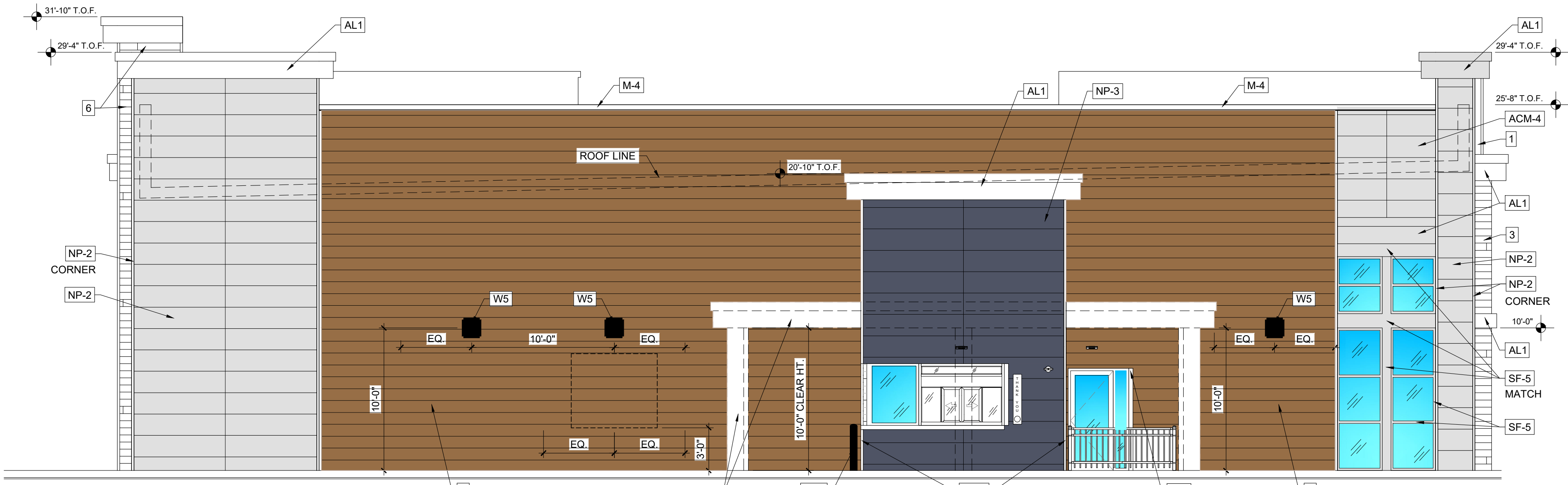
PLANS PREPARED BY:
A & S ENGINEERING INC.
 PLANNING ENGINEERING CONSTRUCTION MANAGEMENT
 28405 SAND CANYON ROAD, SUITE B
 CANYON COUNTRY, CA 91387
 PHONE #: (661) 250-9300; FAX #: (661) 250-9333



ETHANAC TRAVEL CENTER
 STORE # -
 DRAWN O.S.
 CHECKED -
 DATE 09/21/2023
 SHEET TITLE C-STOR
 EXTERIOR ELEVATIONS
 JOB NUMBER -
 SHEET NUMBER
A6.1



1 EAST ELEVATION
 A6.1 SCALE: 3/16" = 1'-0"



2 WEST ELEVATION
 A6.1 SCALE: 3/16" = 1'-0"

STORE" EXTERIOR FINISHES LEGEND

- ENTRY
HARDIE® PLANK SMOOTH JH40-30 TIMBER BARK
- RIBBED METAL SIDING
ATAS RIGID WALL (MFR160)
ACRYLIC COATED GALVALUME (24 GA)
- METAL WALL PANELS
ZINC GRAY LG (KYNAR 432R1583)
- STOREFRONT
CLEAR ANODIZED ALUMINUM

STORE" EXTERIOR FINISHES LEGEND

- COOLER/DELI WALL
AMERICAN OLEAN 4X12
URBAN CANVAS #91 "BISCUIT"
LATICRETE UNSANDED, #44 "BRIGHT WHITE"
- RETAIL COUNTERTOPS
SOLID SURFACE
MOON HAZE
- SLATWALL
PREFINISHED BLACK
- CABINETS / WALL PROTECTION
WILSONART 7925-60 "MONTICELLO MAPLE"
**WALL PROTECTION FORMICA HARDSTOP
W/ MATCHING LAMINATE
- FLOORING
POLISHED CONCRETE
NATURAL FINISH, "SALT & PEPPER"

NOTE
 CONTRACTOR IS TO INSTALL ALL JOINTS/REVEALS IN STUCCO, TILE, AND NICHIHA ONLY IN THE LOCATIONS SHOWN AND DIMENSIONED ON THE PLANS. ANY DEVIATION MUST BE PRE-APPROVED IN WRITING BY TRAVEL CENTER'S CORPORATE ARCHITECT. FAILURE TO FOLLOW THIS WILL RESULT IN THE JOINTS BEING REMOVED, REINSTALLED PROPERLY AND THAT AREA REFINISHED AT THE CONTRACTORS EXPENSE.

WALL TEXTURE LEGEND

- 2" INSULATED EXTERIOR METAL WALL PANEL SYSTEM
- HORIZONTAL RIBBED METAL SIDING
- HARDIE® PLANK SMOOTH JH40-30 TIMBER BARK

TRAVEL CENTER EXTERIOR LEGEND

- 1 2" INSULATED EXTERIOR METAL WALL PANEL SYSTEM COLOR: "ZINC GRAY 432R1583" FURNISHED BY OWNER, INSTALLED BY CONTRACTOR
- 2 NOT USED
- 3 HARDIE® PLANK SMOOTH JH40-30 TIMBER BARK
- 4 NOT USED
- 5 WALL PACK LIGHT FIXTURE - SEE ELECTRICAL FURNISHED BY OWNER, INSTALLED BY CONTRACTOR
- 6 HORIZONTAL RIBBED SIDING SYSTEM ATAS RIGID WALL (MFR160) (OR EQUAL), 24 GAUGE "ACRYLIC COATED GALVALUME" - SYSTEM INCLUDES CONCEALED FASTENERS AND MATCHING TRIM, JOINTS, AND TRANSITIONS - FURNISHED BY OWNER, INSTALLED BY CONTRACTOR
- 7 WALL ART LIGHT FIXTURE - SEE ELECTRICAL FURNISHED BY OWNER, INSTALLED BY CONTRACTOR
- 8 WALL SCONCE LIGHT FIXTURE - SEE ELECTRICAL FURNISHED BY OWNER, INSTALLED BY CONTRACTOR
- 9 PARAPET METAL COPING PAINT SHERWIN WILLIAMS "BAKED COOKIE" SW9908, IN A SATIN FINISH, FURNISHED AND INSTALLED BY ROOFING CONTRACTOR
- 10 PRE-FINISHED 24 GAUGE METAL ROOF COPING - EQUAL TO BERRIDGE, STANDARD COLOR, KYNAR 500 "ZINC GRAY" FURNISHED AND INSTALLED BY ROOFING CONTRACTOR
- 11 DOORS AND FRAMES TO BE PAINTED "GAUNTLET GRAY" SW7019, IN A SATIN FINISH.
- AL1 CLEAR ANODIZED ALUMINUM FINISH

"FUTURE STORE" EXTERIOR FINISHES LEGEND

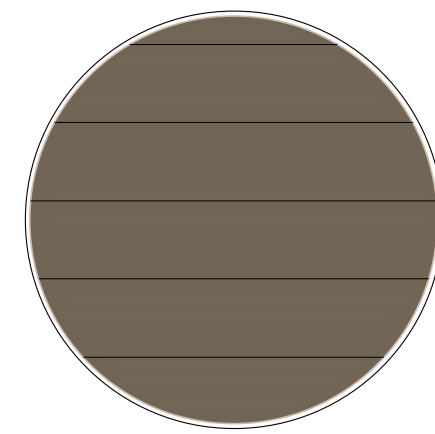
- BL-1 PLASTIC BOLLARD SLEEVE
- 3 HARDIE® PLANK SMOOTH JH40-30 TIMBER BARK
- NP-2 FIBER CEMENT WALL PANEL (BASIS OF DESIGN -NICHIHA ILLUMINATION SERIES - BLAZE)
- NP-3 FIBER CEMENT WALL PANEL (BASIS OF DESIGN -NICHIHA ILLUMINATION SERIES - KNIGHTS ARMOR)
- M-4 PARAPET CAP (ANODIC CLEAR)
- SF-5 ALUMINUM STOREFRONT SYSTEM
- ACM-4 MODULAR SOFFIT/ FASCIA

NOTE
 ALL EXTERIOR PAINT TO BE "CONFLEX XL" HIGH-BUILD ELASTOMERIC COATING SPECIFICATION.

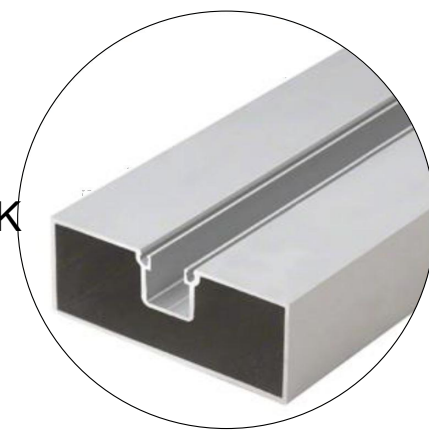
H:\P...F... (PERFORM) DRAWINGS

NICHIHA WALL

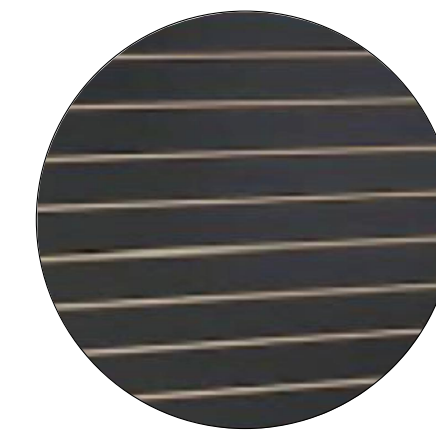
STORE" EXTERIOR FINISHES LEGEND



ENTRY
HARDIE® PLANK SMOOTH JH40-30 TIMBER BARK



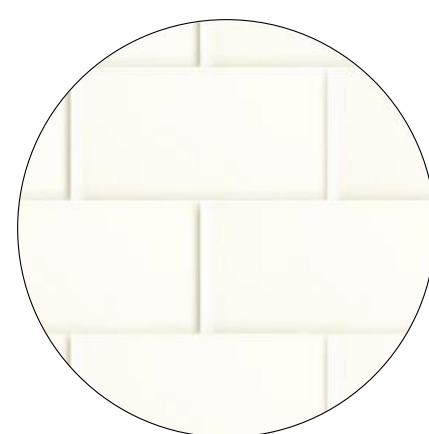
STOREFRONT
CLEAR ANODIZED ALUMINUM



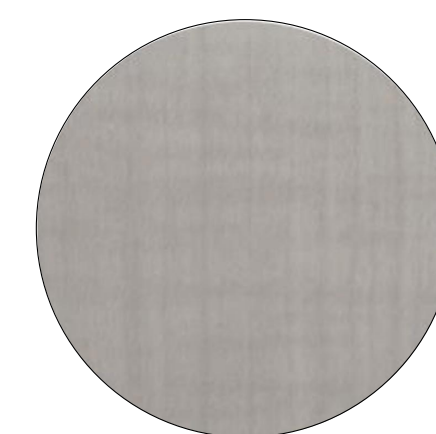
SLATWALL
PREFINISHED BLACK



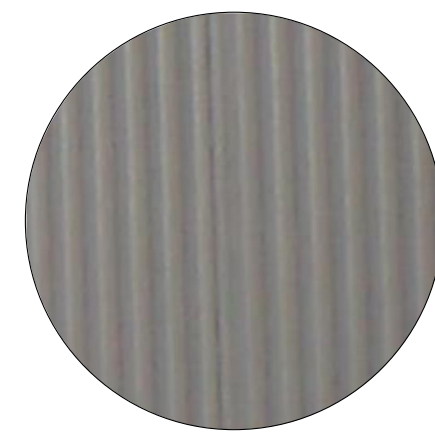
RIBBED METAL SIDING
ATAS RIGIS WALL (MFR160)
ACRYLIC COATED GALVALUME (24 GA)



COOLER/DELI WALL
AMERICAN OLEAN, 4X12
URBAN CANVAS #91 "BISCUIT"
LATICRETE UNSANDED, #44 "BRIGHT WHITE"



CABINETS / WALL PROTECTION
WILSONART 7925-60 "MONTICELLO MAPLE"
**WALL PROTECTION FORMICA HARDSTOP
W/ MATCHING LAMINATE



METAL WALL PANELS
ZINC GRAY LG (KYNAR 432R1583)



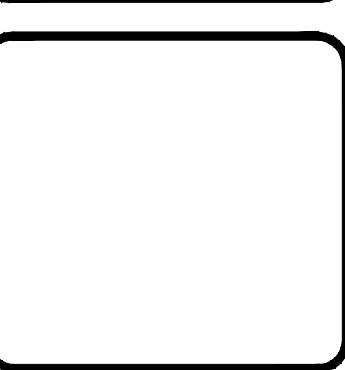
RETAIL COUNTERTOPS
SOLID SURFACE
MOON HAZE



FLOORING
POLISHED CONCRETE
NATURAL FINISH, "SALT & PEPPER"

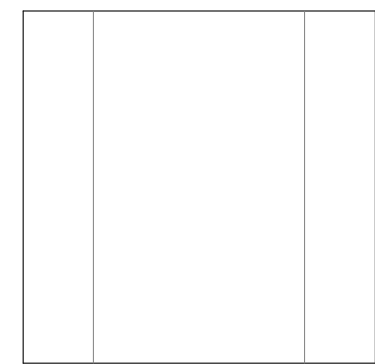
REVISIONS	BY

PLANS PREPARED BY:
A & S ENGINEERING INC.
PLANNING ENGINEERING CONSTRUCTION MANAGEMENT
28405 SAND CANYON ROAD, SUITE B
CANYON COUNTRY, CA 91387
PHONE #: (661) 250-9300; FAX #: (661) 250-9333



WALL TEXTURE LEGEND

2" INSULATED
EXTERIOR METAL WALL
PANEL SYSTEM



HORIZONTAL RIBBED
METAL SIDING



HARDIE® PLANK SMOOTH
JH40-30 TIMBER BARK



TRAVEL CENTER EXTERIOR LEGEND

1 2" INSULATED EXTERIOR METAL
WALL PANEL SYSTEM
COLOR: "ZINC GRAY 432R1583"
FURNISHED BY OWNER,
INSTALLED BY CONTRACTOR

2 NOT USED

3 HARDIE® PLANK SMOOTH JH40-30
TIMBER BARK

4 NOT USED

5 WALL PACK LIGHT
FIXTURE - SEE ELECTRICAL
FURNISHED BY OWNER,
INSTALLED BY CONTRACTOR

6 HORIZONTAL RIBBED SIDING SYSTEM
ATAS RIGID WALL (MFR160) (OR EQUAL),
24 GAUGE "ACRYLIC COATED
GALVALUME" - SYSTEM INCLUDES
CONCEALED FASTENERS AND
MATCHING TRIM, JOINTS, AND
TRANSITIONS - FURNISHED BY OWNER,
INSTALLED BY CONTRACTOR

7 WALL ART LIGHT
FIXTURE - SEE ELECTRICAL
FURNISHED BY OWNER,
INSTALLED BY CONTRACTOR

8 WALL SCONCE LIGHT
FIXTURE - SEE ELECTRICAL
FURNISHED BY OWNER,
INSTALLED BY CONTRACTOR

9 PARAPET METAL COPING
PAINT SHERWIN WILLIAMS "BAKED
COOKIE" SW#9098, IN A SATIN FINISH.
FURNISHED AND INSTALLED BY ROOFING
CONTRACTOR

10 PRE-FINISHED 24 GAUGE METAL ROOF
COPING - EQUAL TO BERRIDGE,
STANDARD COLOR, KYNAR 500 "ZINC
GRAY" FURNISHED AND INSTALLED BY
ROOFING CONTRACTOR

11 DOORS AND FRAMES TO BE PAINTED
"GAUNTLET GRAY" SW#7019, IN A SATIN
FINISH.

AL1 CLEAR ANODIZED ALUMINUM FINISH

NOTE

ALL EXTERIOR PAINT TO BE "CONFLEX XL" HIGH-BUILD ELASTOMERIC COATING SPECIFICATION.

"FUTURE STORE" EXTERIOR FINISHES LEGEND

BL-1 PLASTIC BOLLARD SLEEVE

3 HARDIE® PLANK SMOOTH JH40-30 TIMBER
BARK

NP-2 FIBER CEMENT WALL PANEL (BASIS OF DESIGN
-NICHIIHA ILLUMINATION SERIES - BLAZE)

NP-3 FIBER CEMENT WALL PANEL (BASIS OF DESIGN
-NICHIIHA ILLUMINATION SERIES - KNIGHTS
ARMOR)

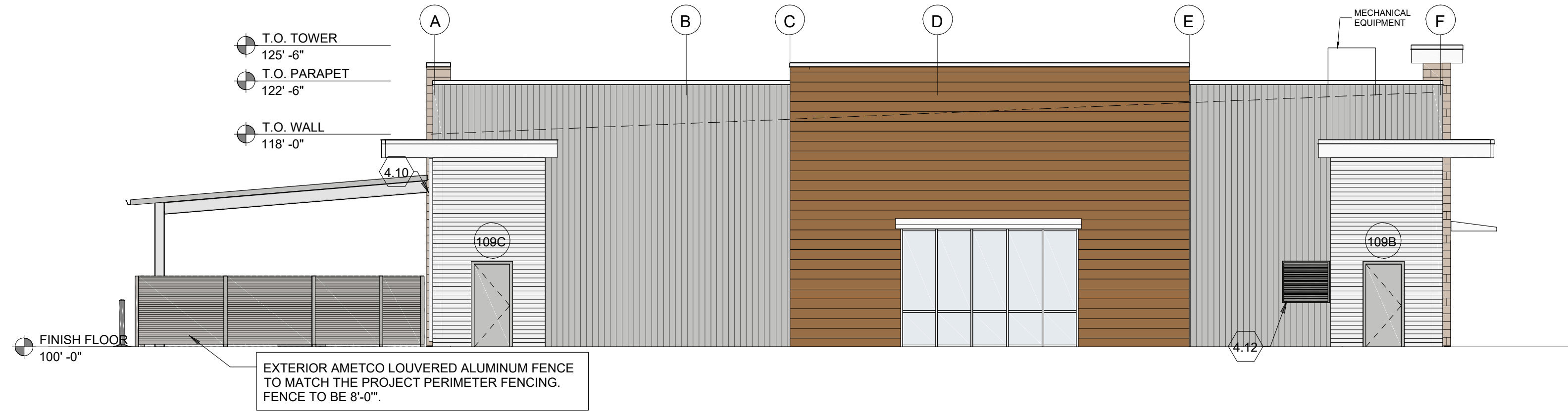
M-4 PARAPET CAP (ANODIC CLEAR)

SF-5 ALUMINUM STOREFRONT SYSTEM

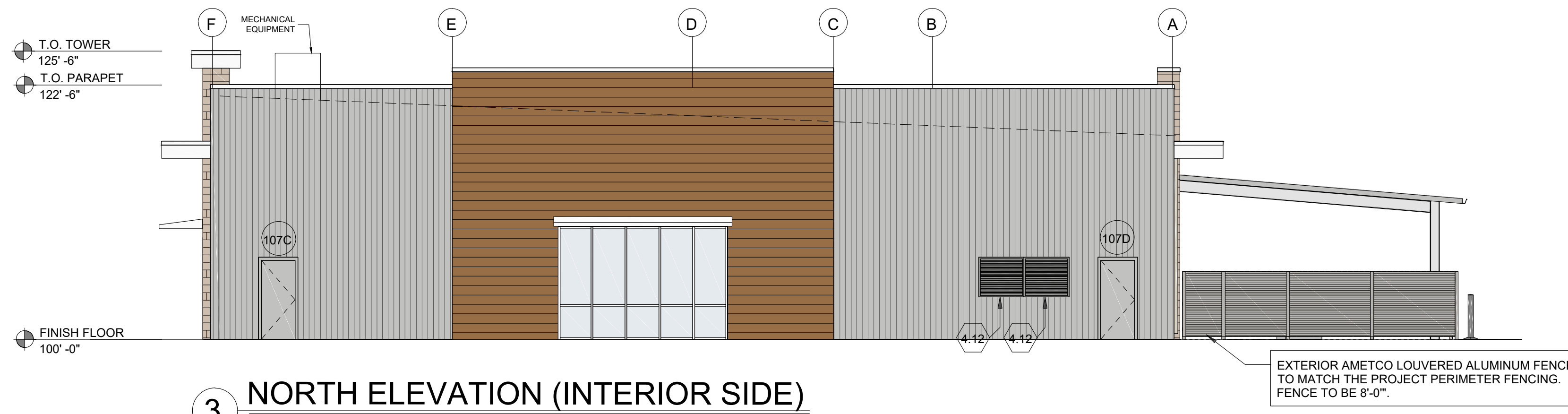
ACM-4 MODULAR SOFFIT/ FASCIA

ETHANAC TRAVEL CENTER
STORE # -
ADDRESS: ETHANAC ROAD AND TRUMBLE ROAD
PERRIS, CA 92585

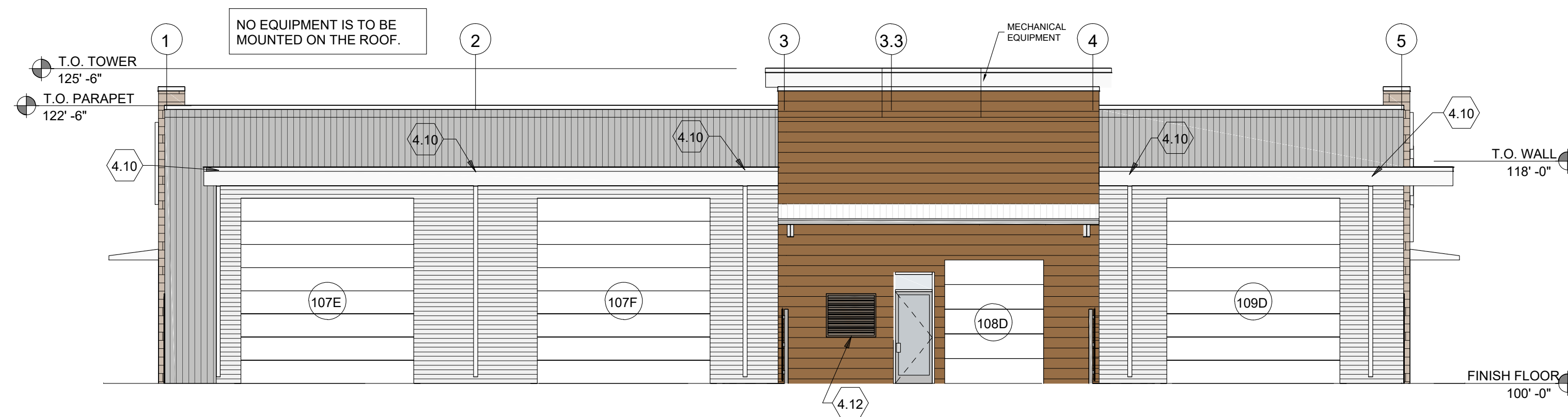
DRAWN	A.R.
CHECKED	-
DATE	02/02/2024
SHEET TITLE	C-STORE
EXTERIOR ELEVATIONS	JOB NUMBER
SHEET NUMBER	A6.2



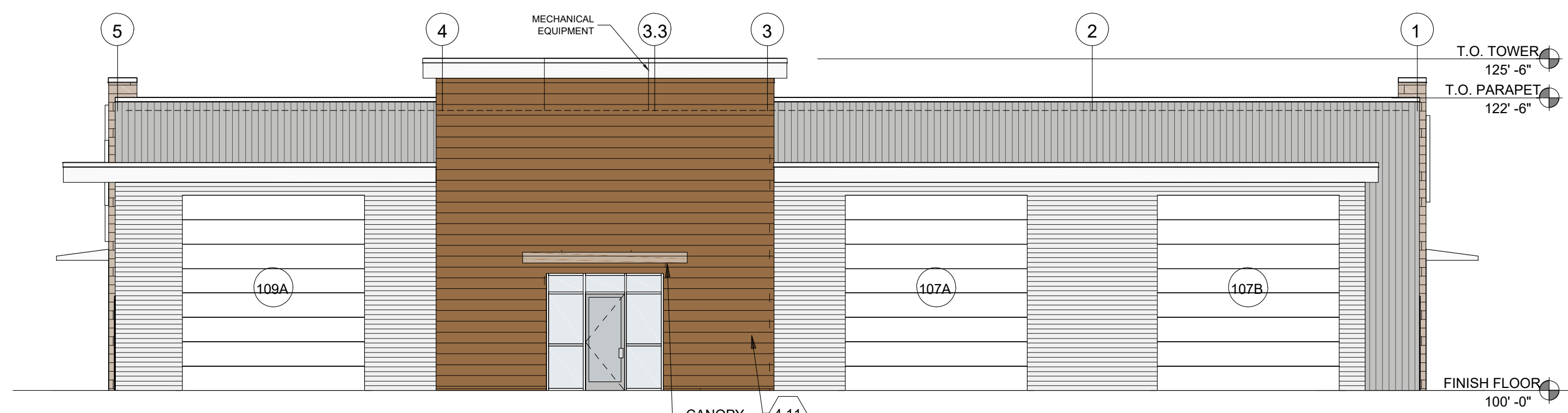
4 SOUTH ELEVATION (ETHANAC ROAD STREET SIDE)
1/8" = 1'-0"



3 NORTH ELEVATION (INTERIOR SIDE)
1/8" = 1'-0"



2 WEST ELEVATION (REAR)
1/8" = 1'-0"

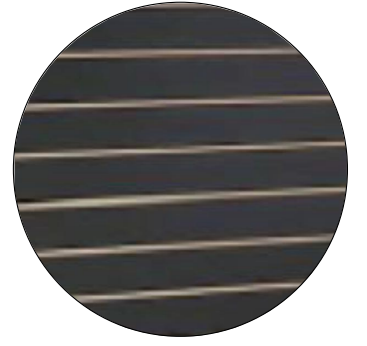
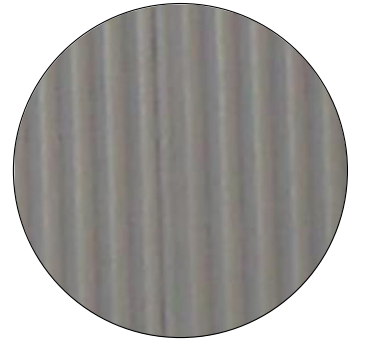
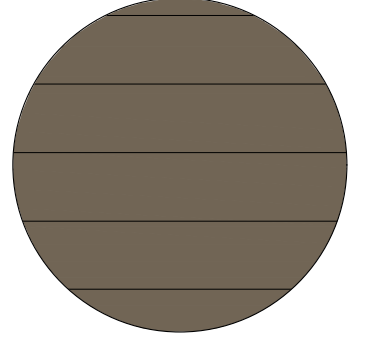
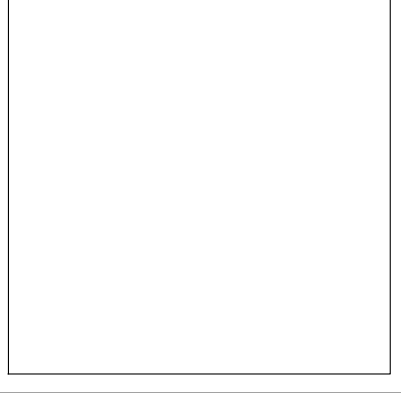
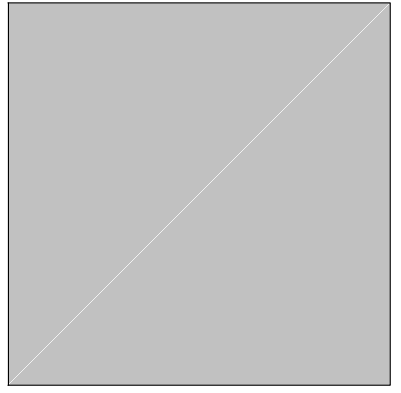
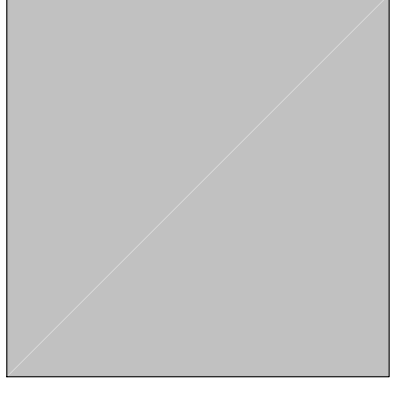


1 EAST ELEVATION (FRONT)
1/8" = 1'-0"

KEYNOTES - EXTERIOR ELEVATIONS

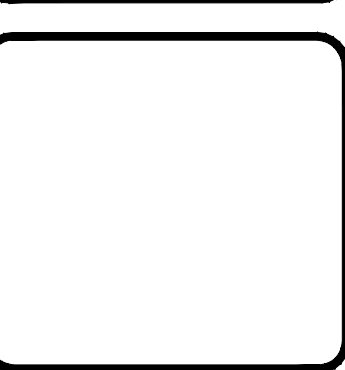
4.1	SIGN 1 (INTERNAL LED CABINET W/ FLEXFACE IN A HINGED RETAINER SIGN)
4.3	SIGN 3 (1" DEPTH ALUMINUM PAN FACE SIGN)
4.4	SIGN 4 (1" DEPTH ALUMINUM PAN FACE SIGN)
4.5	SIGN 5 (1" DEPTH ALUMINUM PAN FACE SIGN)
4.6	SIGN 6 (1" DEPTH ALUMINUM PAN FACE SIGN)
4.10	PEMB GUTTER
4.11	KNOX BOX MOUNTED NO HIGHER THAN 6'-0" ABOVE GRADE (AS REQUIRED BY LOCAL JURISDICTION)
4.12	LOUVERS - REFER TO MECHANICAL FOR INFORMATION

ELEVATION COLORS

ITEM	FINISH	COLOR -MATCH MCCI SIGNATURE COLORS
METAL WALL PANELS	LOW-SEMI GLOSS	1. ATAS RIGID WALL ACRYLIC COATED GALVALUME  2. ZINC GRAY LG 
WAINSCOT & ENTRY FEATURE	ARCHITECTURAL PANEL	HARDIE® PLANK SMOOTH JH40-30 TIMBER BARK 
ROOF	PVDF LOW GLOSS	SOLAR WHITE 
CANOPY	PVDF LOW GLOSS	CLEAR ANODIZED ALUMINUM
DOWNSPOUT	PVDF LOW GLOSS	ZINC GRAY
GUTTER	PVDF LOW GLOSS	ZINC GRAY
TRIM	PVDF LOW GLOSS	ZINC GRAY 
OVERHEAD DOOR	PREFINISHED	TO BE SELECTED BY OWNER
STOREFRONT	PREFINISHED	CLEAR ANODIZED ALUMINUM
H.M. DOOR AND FRAME	PAINT	PAINT -MATCH ZINC GRAY 

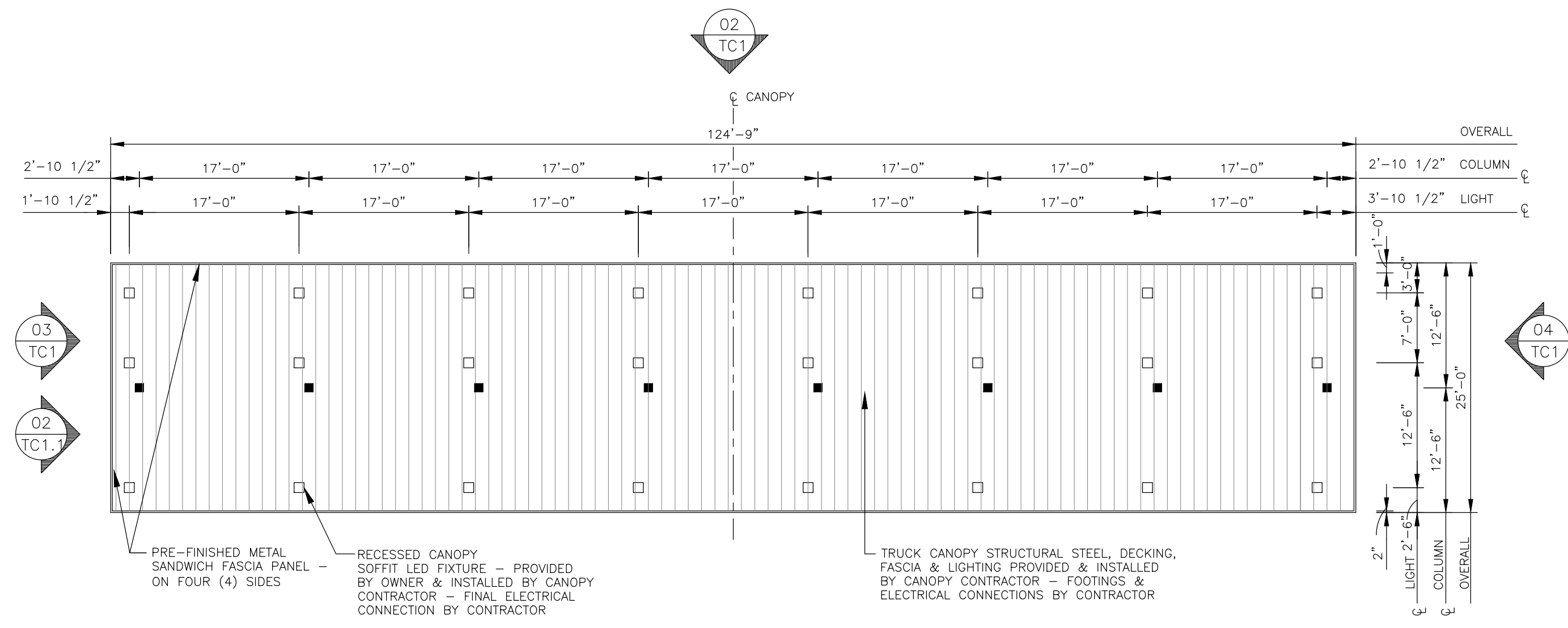
REVISIONS	BY

PLANS PREPARED BY:
A & S ENGINEERING INC.
PLANNING ENGINEERING CONSTRUCTION MANAGEMENT
28405 SAND CANYON ROAD, SUITE B
CANYON COUNTRY, CA 91387
PHONE #: (661) 250-9300; FAX #: (661) 250-9333

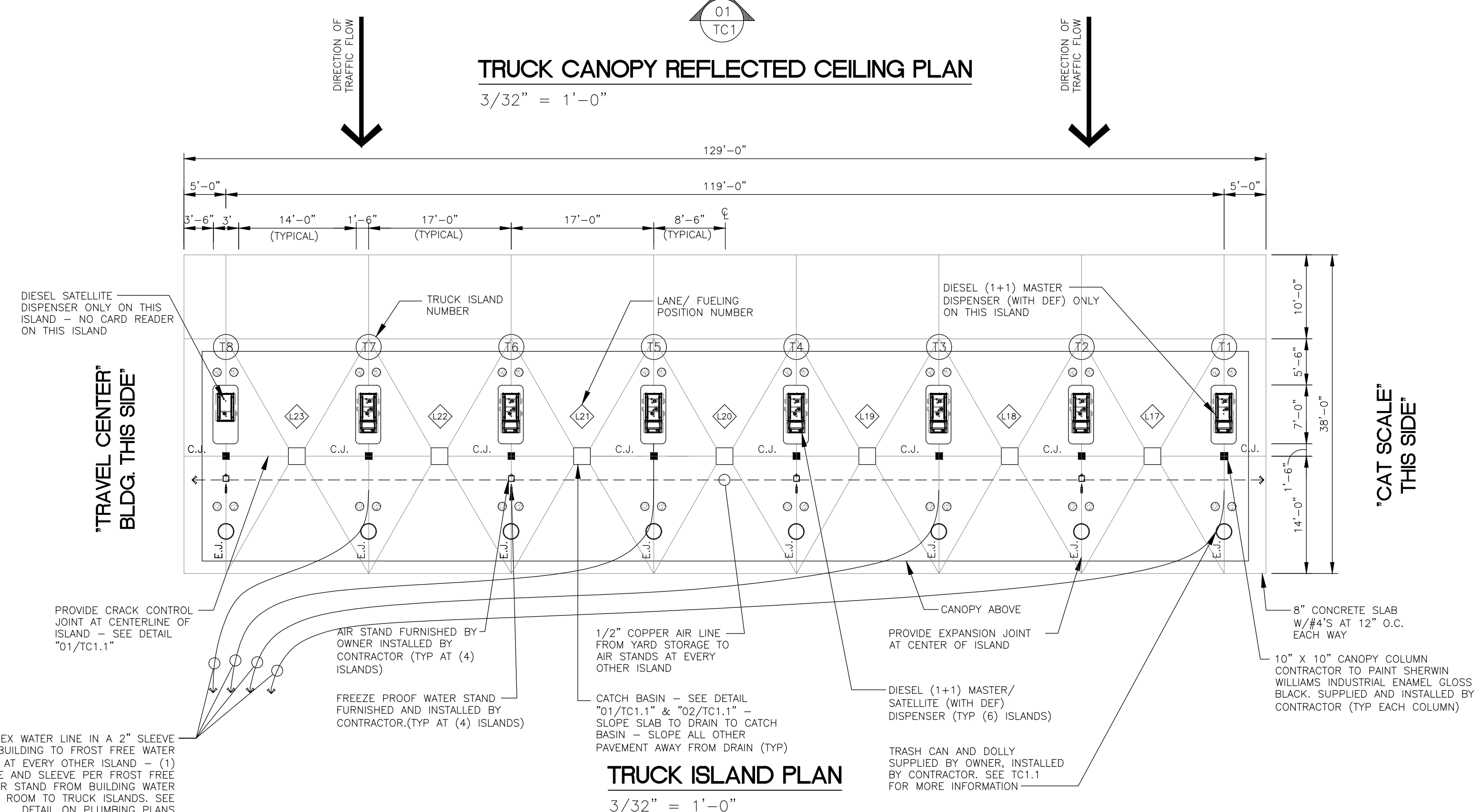


ETHANAC TRAVEL CENTER
STORE # -
ADDRESS: ETHANAC ROAD AND TRUMBLE ROAD
PERRIS, CA 92585

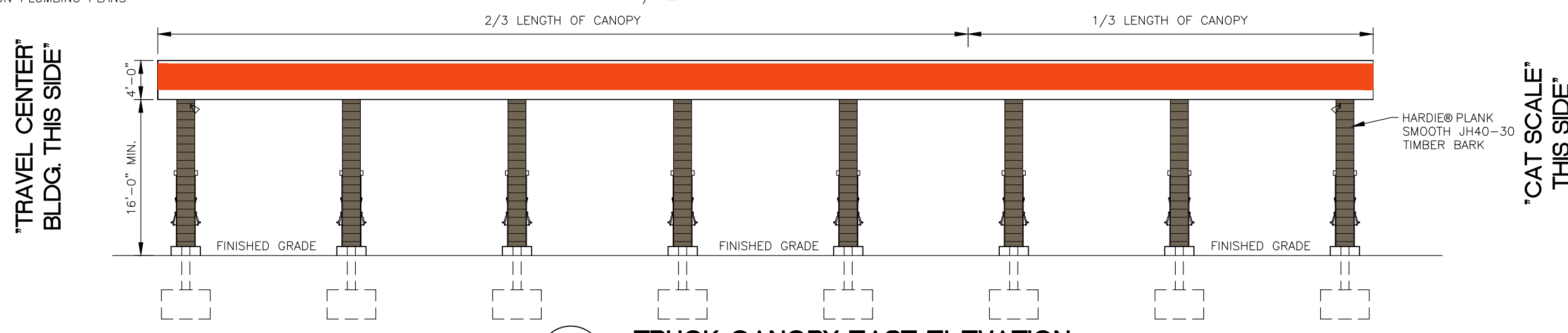
DRAWN	A.R.
CHECKED	-
DATE	02/02/2024
SHEET TITLE	SHOP BLDG
EXTERIOR ELEVATIONS	-
JOB NUMBER	-
SHEET NUMBER	A401



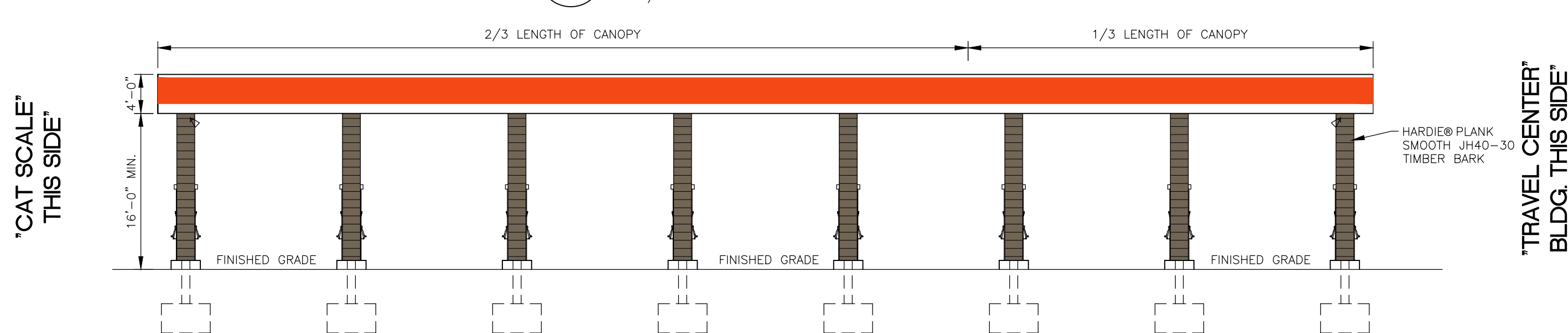
TRUCK CANOPY REFLECTED CEILING PLAN
3/32" = 1'-0"



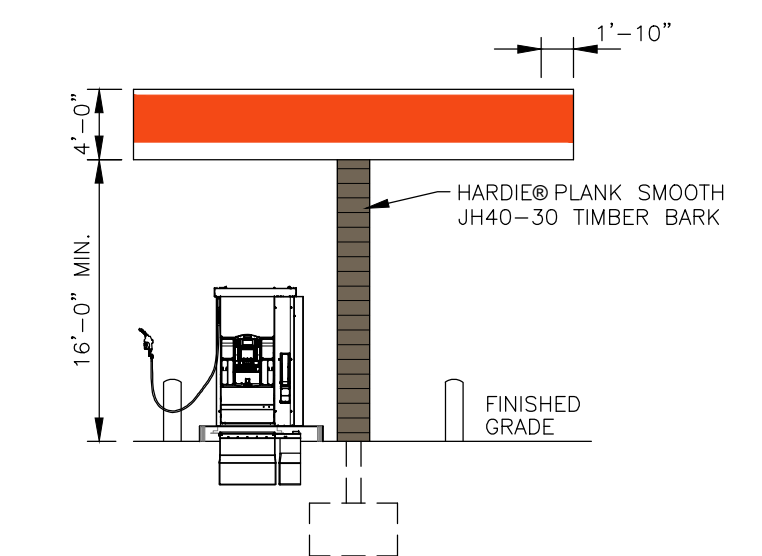
TRUCK ISLAND PLAN
3/32" = 1'-0"



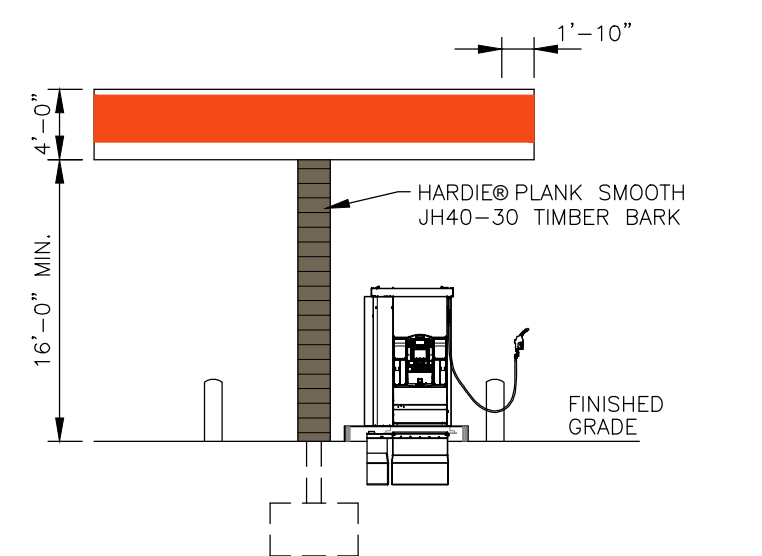
TRUCK CANOPY EAST ELEVATION
3/32" = 1'-0"



TRUCK CANOPY WEST ELEVATION
3/32" = 1'-0"



TRUCK CANOPY SOUTH ELEVATION
3/32" = 1'-0"



TRUCK CANOPY NORTH ELEVATION
3/32" = 1'-0"

REVISIONS	BY
1	
2	
3	
4	
5	
6	
7	
8	
9	
10	
11	

PLANS PREPARED BY:
A & S ENGINEERING INC.
PLANNING ENGINEERING CONSTRUCTION MANAGEMENT
28405 SAND CANYON ROAD, SUITE B
CANYON COUNTRY, CA 91387
PHONE #: (661) 250-9300; FAX #: (661) 250-9333

ETHANAC TRAVEL CENTER
STORE # -
ADDRESS: ETHANAC ROAD AND TRUMBLE ROAD
PERRIS, CA 92585

DRAWN	O.S.
CHECKED	
DATE	09/21/2023
SHEET TITLE	TRUCK CANOPY PLAN & ELEVATIONS
JOB NUMBER	
SHEET NUMBER	TC1