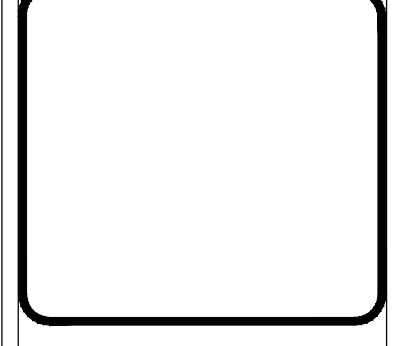


REVISIONS	BY

PLANS PREPARED BY:
A & S ENGINEERING INC.
 PLANNING ENGINEERING CONSTRUCTION MANAGEMENT
 28405 SAND CANYON ROAD, SUITE B
 CANYON COUNTRY, CA 91387
 PHONE #: (661) 250-9300; FAX #: (661) 250-9333



ETHANAC TRAVEL CENTER
 STORE # -
 ADDRESS: ETHANAC ROAD AND TRUMBLE ROAD
 PERRIS, CA 92585

DRAWN O.S.
 CHECKED
 DATE 09/21/2023
 SHEET TITLE TIRE SHOP
 FLOOR PLAN / DETAILS
 JOB NUMBER
 SHEET NUMBER
A101

OPAQUE THERMAL ENVELOPE REQ'S

2018 INTERNATIONAL ENERGY CONSERVATION CODE
 COUNTY: STANISLAUS COUNTY
 CLIMATE ZONE: 12

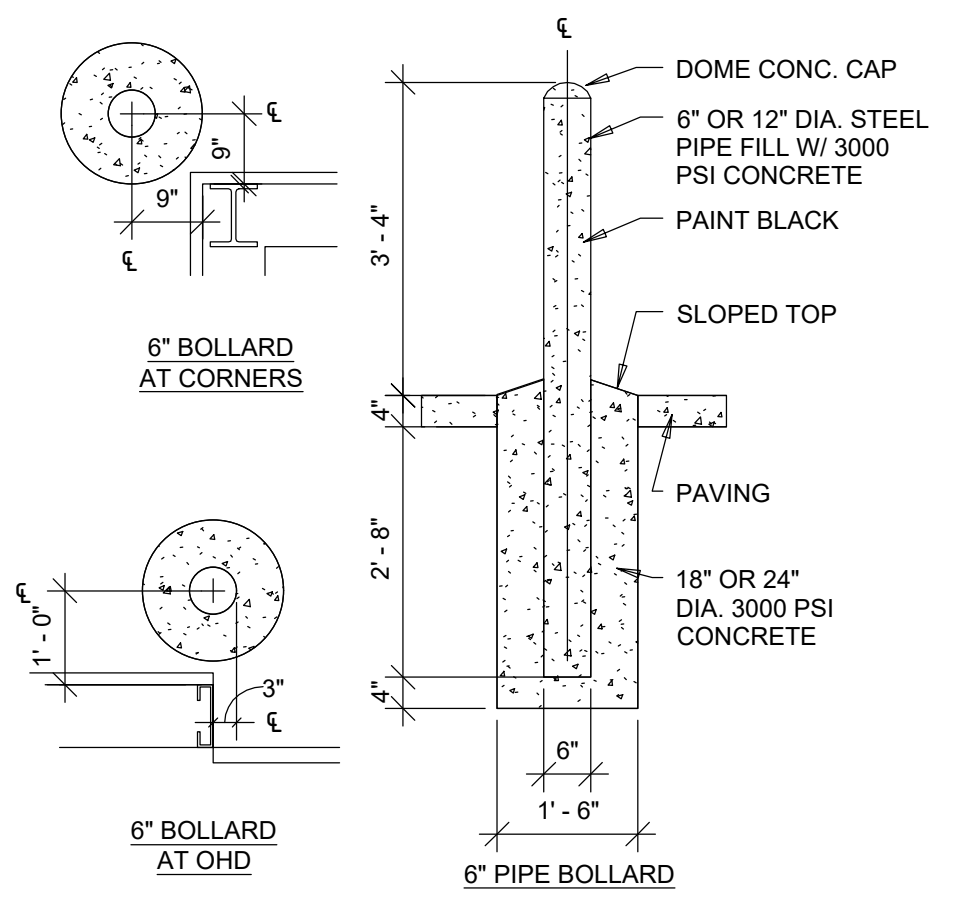
ROOFS METAL BUILDING	MIN. R-19 + R-11 LS W/ R-5 THERMAL BLOCKS (a, b) OR U-0.041
WALLS, ABOVE GRADE METAL BUILDING	MIN. R-19+R-13 CI OR U-0.061
WALLS, BELOW GRADE BELOW GRADE WALL (d)	R-7.5 CI
SLAB-ON-GRADE FLOORS UNHEATED SLAB	R-10 FOR 24" BELOW
OPAQUE DOORS SWINGING	U-0.70
ROLL-UP OR SLIDING	MIN. R-4.75 OR U0.45 -PROVIDE R-18/U0.05
VERTICAL FENESTRATION FIXED OPERATION	U-0.41
ENTRANCE DOORS	U-0.45
SHGC	0.23

FOR SI: 1 INCH = 25.4 MM. CI = CONTINUOUS INSULATION. NR = NO REQUIREMENT.
 LS = LINER SYSTEM—A CONTINUOUS MEMBRANE INSTALLED BELOW THE PURLINS AND UNINTERRUPTED BY FRAMING MEMBERS. UNCOMPRESSED, UNFACED INSULATION RESTS ON TOP OF THE MEMBRANE BETWEEN THE PURLINS.
 (a) ASSEMBLY DESCRIPTIONS CAN BE FOUND IN ANSI/ASHRAE/IESNA APPENDIX A
 (b) WHERE USING R-VALUE COMPLIANCE METHOD, A THERMAL SPACER BLOCK SHALL BE PROVIDED, OTHERWISE USE THE U-FACTOR COMPLIANCE METHOD IN TABLE C402.1.2.

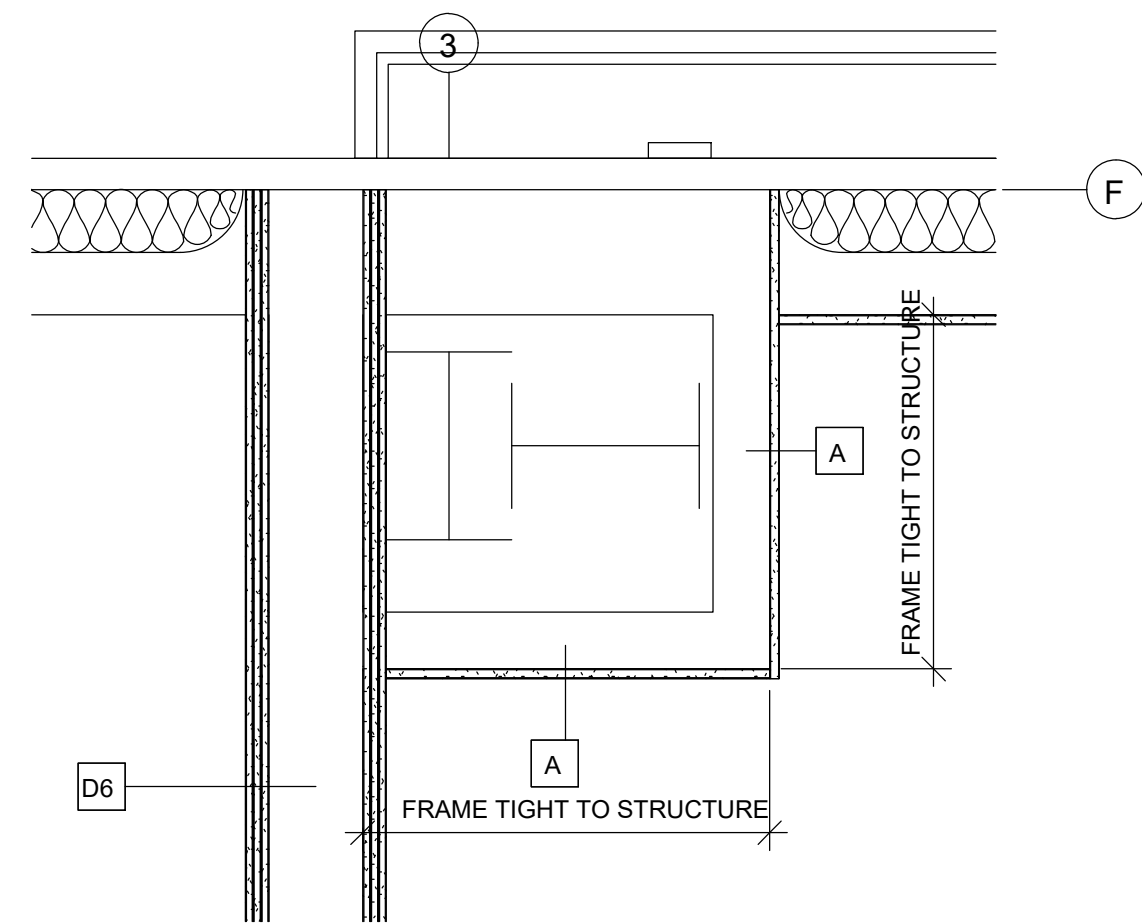
- ### GENERAL SPECIFICATION
- FURNISH ALL LABOR, MATERIALS, EQUIPMENT, AND SUPERVISION NECESSARY TO PROVIDE AND INSTALL THE SYSTEMS, MATERIALS AND/OR PRODUCTS SPECIFIED IN THESE DOCUMENTS AND AS INDICATED IN THE DRAWINGS.
 - PROVIDE AND INSTALL ALL NECESSARY ACCESSORIES AND COMPONENTS TO PROVIDE A COMPLETE AND FUNCTIONAL INSTALLATION.
 - ATTAIN AND MAINTAIN ALL FIRE-RATINGS USING UL APPROVED PRODUCTS, MATERIALS, ASSEMBLIES, SEALANTS AND ATTACHMENT METHODS.
 - UNLESS SPECIFIED OTHERWISE, PROVIDE LIKE PRODUCTS FROM A SINGLE MANUFACTURER WHERE POSSIBLE.
 - PROVIDE MANUFACTURER'S STANDARD GUARANTEES AND WARRANTIES FOR THE MANUFACTURER'S STANDARD DURATION UNLESS GREATER DURATION IS SPECIFIED.
 - DELIVER AND STORE ALL MATERIALS PER MANUFACTURER'S RECOMMENDATIONS.
 - UTILIZE ONLY SKILLED INSTALLERS WITH ADEQUATE EXPERIENCE WITH INSTALLATIONS OF SIMILAR SCOPE.
 - MANUFACTURES LISTED HEREIN ARE PREAPPROVE TO PROVIDE PRODUCT LISTED OR EQUAL PRODUCT AS INDICATED. ALTERNATE MANUFACTURERS MUST BE APPROVED BY THE ARCHITECT PRIOR TO BIDDING.
 - DIMENSIONS, STRENGTHS, THICKNESSES, QUANTITIES, LOCATIONS SPECIFIED HEREIN ARE TO BE CONSIDERED A MINIMUM STANDARD. WHERE APPARENT DISCREPANCIES EXIST IN DRAWINGS, GREATER STRENGTH/QUALITY SHALL GOVERN.
 - COLORS ARE AS INDICATED ON DRAWINGS. IF NOT INDICATED, PROVIDE SAMPLES FOR ARCHITECT TO SELECT FROM MANUFACTURER'S FULL RANGE.
 - EXAMINE AREAS AND CONDITIONS UNDER WHICH WORK IS TO BE PERFORMED AND IDENTIFY CONDITIONS (INCLUDING ENVIRONMENTAL) DETRIMENTAL TO PROPER OR TIMELY COMPLETION. DO NOT PROCEED UNTIL UNSATISFACTORY CONDITIONS HAVE BEEN CORRECTED. START OF WORK SHALL BE CONSTRUED AS ACCEPTANCE OF THE CONDITIONS.
 - CLEAN AND PREPARE ALL AREAS AND SURFACES TO RECEIVE NEW WORK IN STRICT ACCORDANCE WITH MANUFACTURER'S REQUIREMENTS AND/OR RECOMMENDATIONS. ALL INSTALLATIONS SHALL BE IN STRICT ACCORDANCE WITH MANUFACTURER'S WRITTEN INSTRUCTIONS, APPLICABLE BUILDING CODES AND MEETING THE REQUIREMENTS OF THE AUTHORITY HAVING JURISDICTION. INSTALLATIONS SHALL NOT HAVE AN ADVERSE EFFECT ON WARRANTIES OR REQUIRED FIRE-RATINGS.
 - PROTECT INSTALLED WORK FROM DAMAGE FOR THE DURATION OF CONSTRUCTION.

KEYNOTES - OVERALL FLOOR PLAN

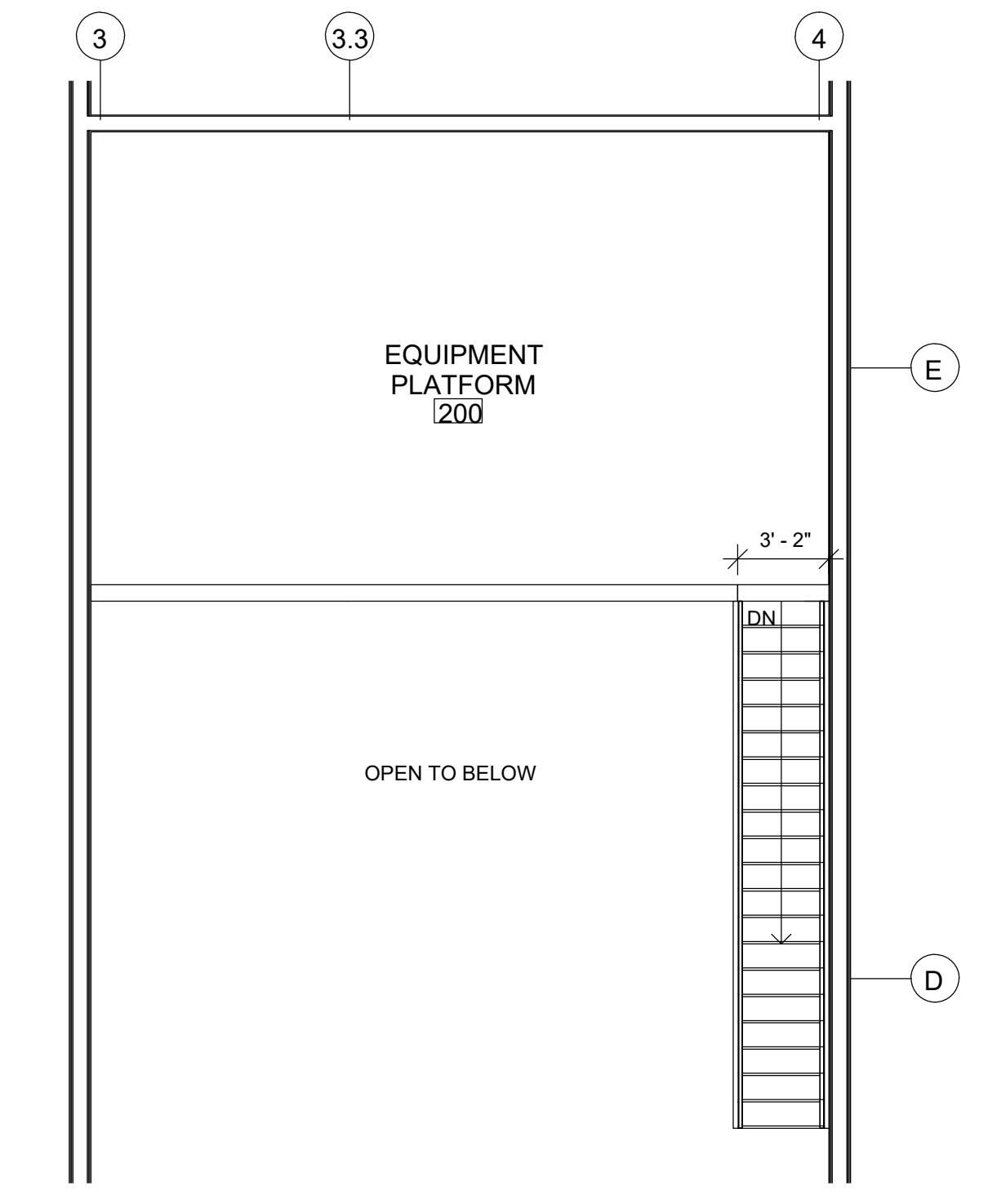
1.2	SERVICE PIT
1.4	6" DIAMETER BOLLARD
1.5	PRE-FINISHED PRE-MANUFACTURED WALL MOUNTED METAL LADDER WITH SKID RESISTANT TEXTURE OR COATING
1.6	EXTERIOR CONCRETE LANDING AT DOOR - REFER TO CIVIL DOCUMENTS FOR CONNECTION TO PUBLIC WAY.
4.12	LOUVERS - REFER TO MECHANICAL FOR INFORMATION



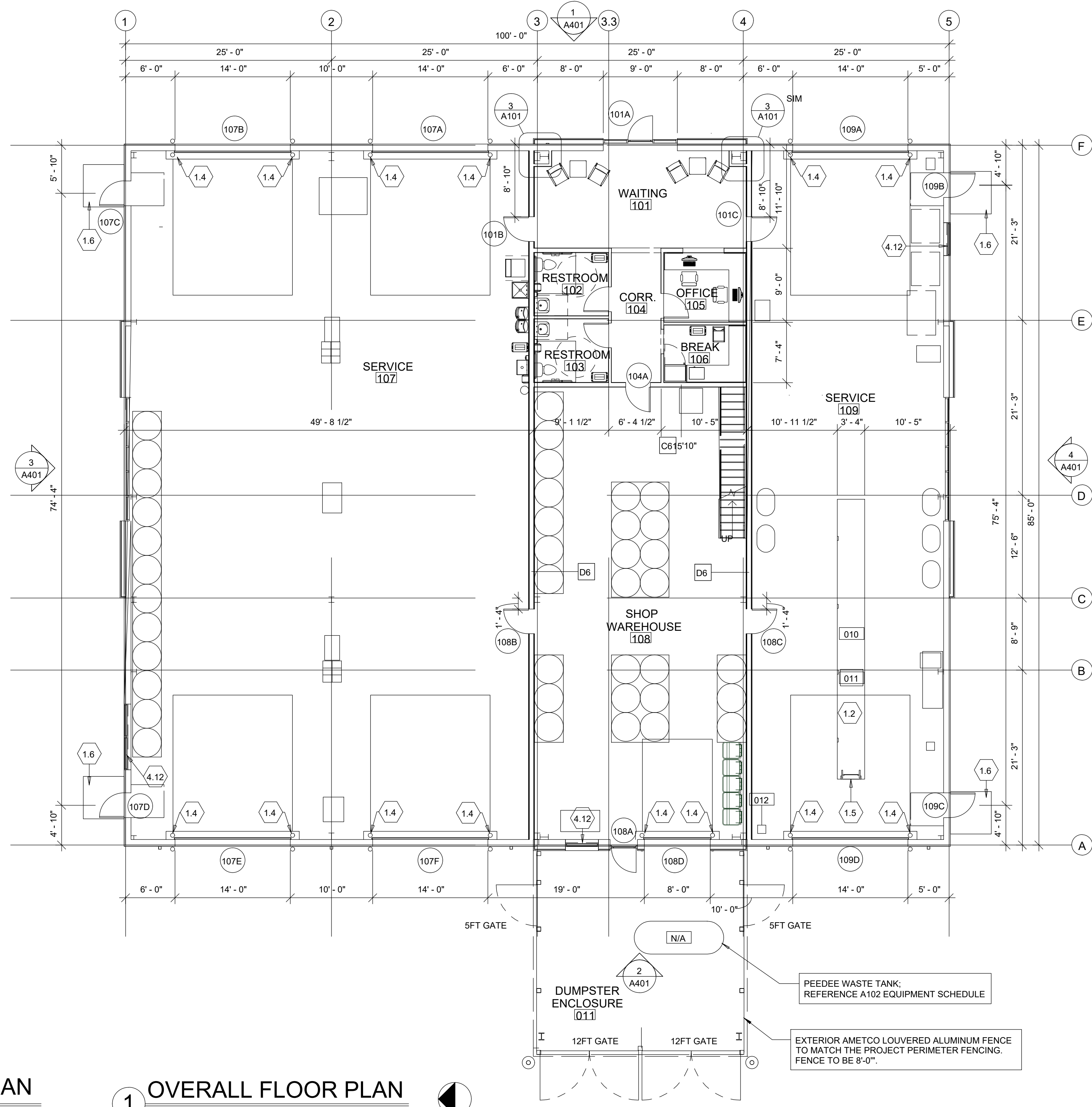
4 BOLLARD DETAIL
 1/2" = 1'-0"



3 COLUMN WRAP DETAIL
 1" = 1'-0"



2 ENLARGED MEZZANINE FLOOR PLAN
 3/16" = 1'-0"



1 OVERALL FLOOR PLAN
 1/8" = 1'-0"